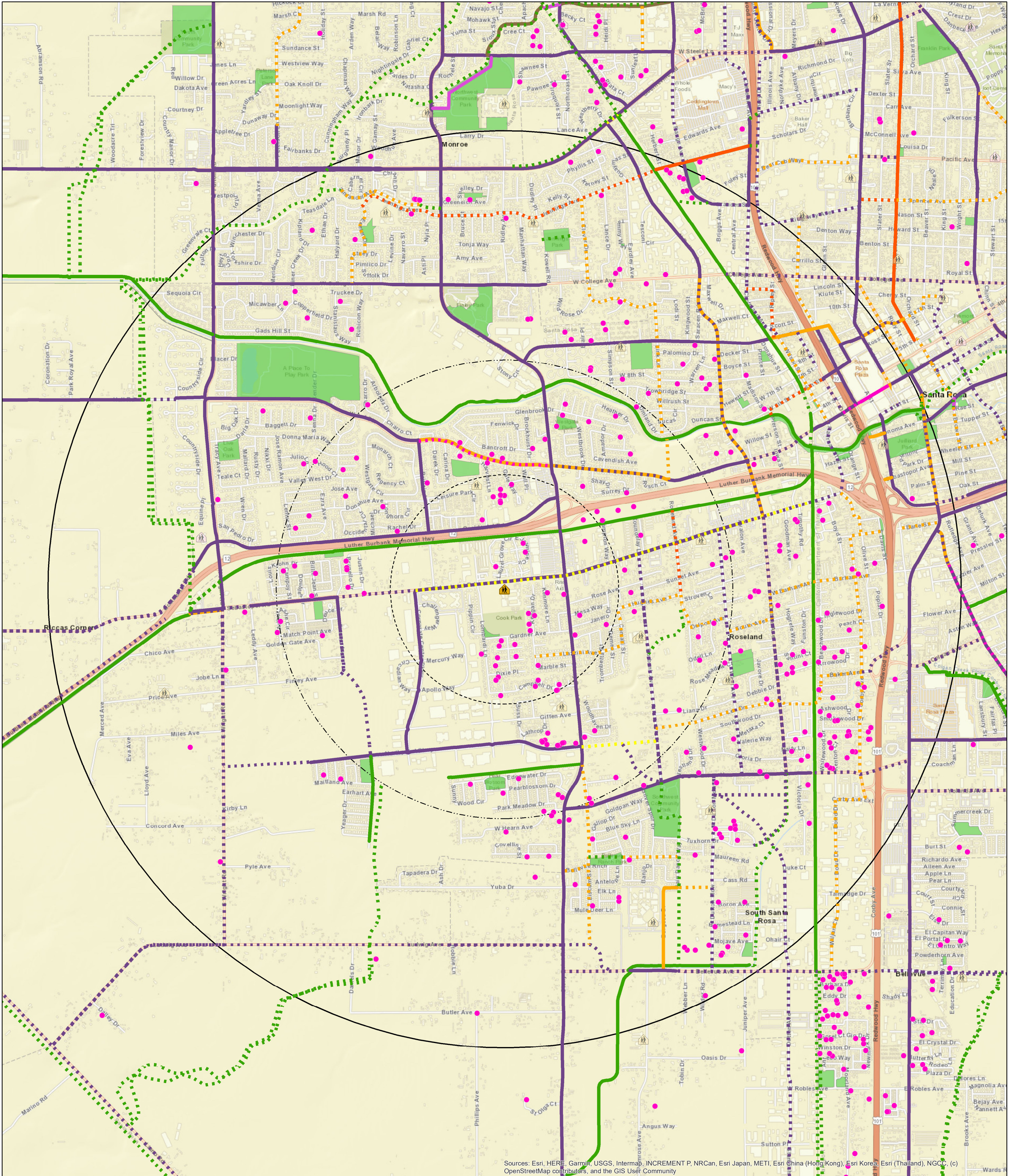


S A F E R O U T E S T O S C H O O L



Sources: Esri, HERE, Garmin, USGS, Intermap, INCREMENT P, NRCan, Esri Japan, METI, Esri (China (Hong Kong)), Esri Korea, Esri (Thailand), NGCC, (c) OpenStreetMap contributors, and the GIS User Community

Cesar Chavez Language Academy 2023-24 SRTS Study Map

698 Geocoded Students
 384 Students live within 2 miles of the school (55%)
 139 Students live within 1 mile of the school (20%)
 48 Students live within 1/2 mile of the school (7%)
 12 Students live within 1/4 of the school (1.7%)



- | Bike Plan Existing | Bike Plan Proposed |
|---|---|
| — Class I | - - - Class I |
| — Class II | - - - Class II |
| — Class III Buffered Bike Lane | - - - Class 2 Buffered Bike Lane |
| — Class III | - - - Class III |
| — Bike Boulevard | - - - Bike Boulevard |
| — PP | - - - Class IV Separated Bikeway |
| — Trail | |

Map Creation Date: Insert Date Here



Map Produced by: Sonoma County Bicycle Coalition
 750 Mendocino Ave, Suite 6
 Santa Rosa, CA 95401
 Phone: 545-0153

Author: Sonoma County Transportation Authority
Projection and Coordinate System Tics: California State Plane Coordinate System, Zone II, NAD 83, US survey feet, Lambert Conformal Conic. Some data have been re-projected from other coordinate systems and may not reflect actual ground positions.
Document Source and Date: [Iso-gis/qgis/data/gis/projects/Health_Services/Public_Health/Safe_Routes_Schools/2023_Maps/BookHav.mxd](#)
Source: Sonoma County GIS Central, Sonoma County Public Safety Consortium, Sonoma County Transportation Authority, Sebastopol Union School District.
 This map is provided as a visual display of County information. Reasonable effort has been made to ensure the accuracy of the map and data provided; nevertheless, some information may not be accurate. The positional accuracy of the data is approximate and not intended to represent map accuracy from a THE MAPS AND ASSOCIATED DATA ARE PROVIDED WITHOUT WARRANTY OF ANY KIND, either expressed or implied, including but not limited to the implied warranties of merchantability and fitness for a particular purpose. Do not make a business decision based on this data before validating your decision with the appropriate County agency or other government entity.