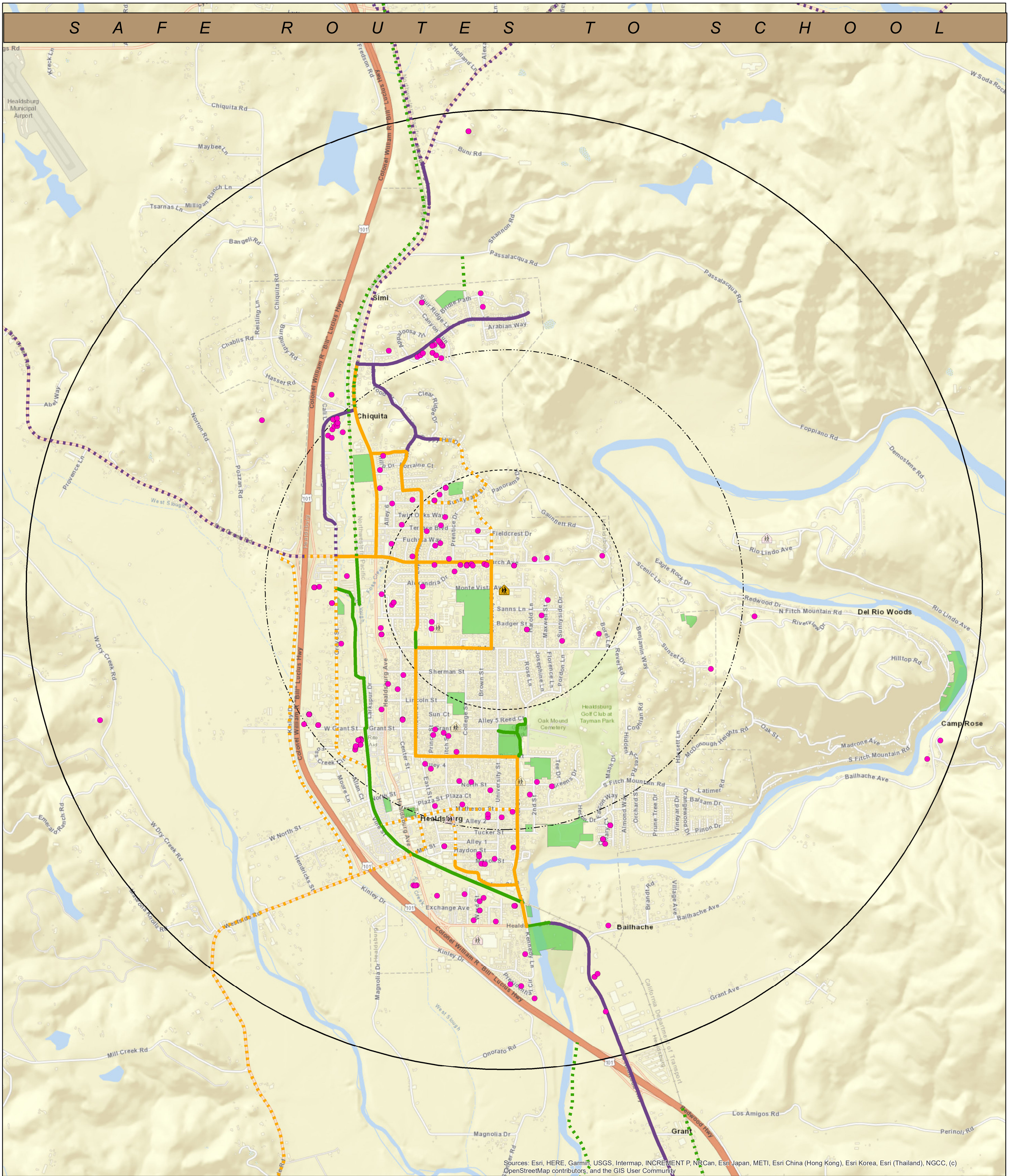


S A F E R O U T E S T O S C H O O L



Sources: Esri, HERE, Garmin, USGS, Intermap, INCREMENT P, NRCan, Esri Japan, METI, Esri China (Hong Kong), Esri Korea, Esri (Thailand), NGCC, (c) OpenStreetMap contributors, and the GIS User Community

Healdsburg Elem: Fitch Mountain 2023-24 SRTS Study Map

197 Geocoded Students
 185 Students live within 2 miles of the school (94%)
 118 Students live within 1 mile of the school (60%)
 40 Students live within 1/2 mile of the school (20%)
 17 Students live within 1/4 mile of the school (9%)



- | Bike Plan Existing | Bike Plan Proposed |
|------------------------------|----------------------------|
| Class I | Class I |
| Class II | Class II |
| Class III Buffered Bike Lane | Class 2 Buffered Bike Lane |
| Class III | Class III |
| Bike Boulevard | Bike Boulevard |
| PP | Class IV Separated Bikeway |
| Trail | |

Map Creation Date: *Insert Date Here*



Map Produced by: Sonoma County Bicycle Coalition
 750 Mendocino Ave, Suite 6
 Santa Rosa, CA 95401
 Phone: 545-1153

Author: Sonoma County Transportation Authority
Projection and Coordinate System Tics: California State Plane Coordinate System, Zone II, NAD 83, US survey feet, Lambert Conformal Conic. Some data have been re-projected from other coordinate systems and may not reflect actual ground positions.
Document Source and Date: I:\c-gis\gis\data\gis/projects\Health Services\Public Health\Safe Routes Schools\2012 MKS\BookHav.mxd
Source: Sonoma County GIS Central, Sonoma County Public Safety Consortium, Sonoma County Transportation Authority, Sebastopol Union School District.
 This map is provided as a visual display of County information. Reasonable effort has been made to ensure the accuracy of the map and data provided; nevertheless, some information may not be accurate. The positional accuracy of the data is approximate and not intended to represent map accuracy from a THE MAPS AND ASSOCIATED DATA ARE PROVIDED WITHOUT WARRANTY OF ANY KIND, either expressed or implied, including but not limited to, the implied warranties of merchantability and fitness for a particular purpose. Do not make a business decision based on this data before validating your decision with the appropriate County agency or other government entity.