



Cesar Chavez Language Academy SRTS Walk Audit

Wednesday, March 5th, 2025

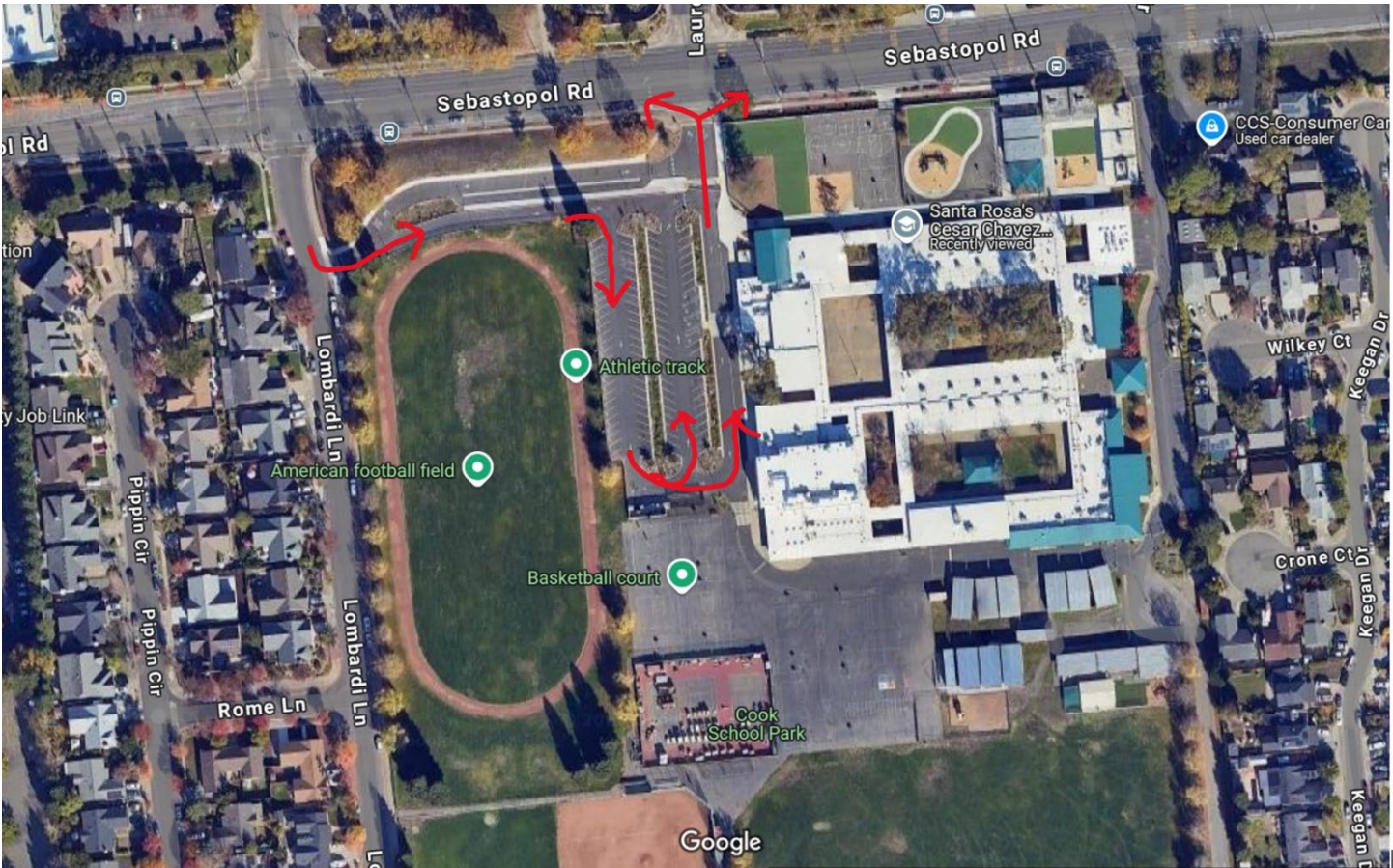


In attendance: Christina Panza (SRTS Director), Alexander Ocegüera (City of Santa Rosa Active Transportation Planner), Mike Vanmidde (City of Santa Rosa Traffic Engineer), Gabriela Mendoza-Torres (Assistant Principal), Melissa Jones (Assistant Principal), Marlene Jimenez-Leiu (Student Engagement Coordinator), Mercedes Binns-Hahn (SR City Civil Engineering Technician, parent), Amy Scribner (teacher, parent), Pat Bailey (substitute teacher, parent, Bike Train leader), Lucy Diaz (parent)

Route: Met at school entrance. Observed drop off in the school parking lot and on Sebastopol Rd., walked east on Sebastopol Rd. to the school driveway on the east side of campus. Continued south on the school driveway to Gardner Ave. Headed west on Gardner Ave. to Lombardi Ln. Walked north on Lombardi Ln. to the corner of Lombardi Ln. and Sebastopol Rd. Then east on Sebastopol Rd to Stony Point Rd., then east on Gardner Ave, and back to the eastern school driveway and onto campus.

Pick up/Drop off: Morning drop off and afternoon pick up for the school takes place primarily in the school driveway loop, with parents entering the school driveway on Lombardi Lane and exiting on Sebastopol Road, where they can make a right or left turn from the school driveway exit. Parents are given dashboard placards with their student's name/grade to facilitate students getting in/out of vehicles to/from class quickly at the curb. There are a number of ways to enter/exit the school:

- Lombardi Court driveway (vehicular entrance only)
- Sebastopol Road western driveway (vehicular exit only)
- Sebastopol Road eastern driveway east (entrance/exit) – *use discouraged outside of Head Start*
- Gardner Avenue Driveway (entrance/exit) – *use discouraged outside of Head Start*
- Gardner Avenue footpath
- Lombardi Lane footpath



Current vehicle Drop-off/Pick Up flow in school parking lot.

Although discouraged, quite a number of non-Head Start parents appear to drop off/pick up students along the eastern driveway between Sebastopol Rd. and Gardner Ave. Some parents also drop off on Gardner Ave. or Lombardi Ln., where students can walk along the footpath to the blacktop behind the school. The school encourages parents to drop off/pick up on Gardner Ave. and/or Lombardi Ln, and staff supervision occurs on the blacktop. However, those drop off/pick up areas have been underutilized.

A crossing guard is stationed at the marked crosswalk in front of the school, directly east of the Sebastopol Rd. western driveway. Another crossing guard is stationed at the marked crosswalk just east of the Sebastopol Rd. eastern driveway.

There are three yellow school buses serving middle-school students. Staff indicated that the district plans to discontinue bus service in the 2025-26 school year.

School Information:

Address	2480 Sebastopol Rd, Santa Rosa 95407
Morning Bell(s)	8:00am (TK-6 th) 8:30am (7 th -8 th)
Afternoon Bell(s)	M/T/Th/F: 1:15pm (TK-K), 2:20pm (1 st -6 th); 2:41pm (7 th -8 th) W: 1:15pm (TK-6 th) 1:46pm (7 th -8 th)

	Modified Day: 11:45am (TK-6 th) 12:50pm (7 th -8 th)
Grade levels	TK-8
Enrollment	814
School type	Charter, Spanish immersion magnet
Student's proximity to school	2024-25 GIS Map Data 814 Geocoded Students 436 live within 2 miles of the school (54%) 136 live within 1 mile (17%) 64 live within ½ mile (8%) 13 live within ¼ mile (2%)
Participating School in Sonoma County SRTS program?	Yes
Student Travel Mode info	Walk – 7% Bike – 2% Other – 0% Carpool – 5% School bus – 9% Transit – 2% Single Family Vehicle – 75%
Safe Routes to School Non-Infrastructure Programming (2024-25)	2 nd Grade Pedestrian safety lessons 4 th Grade Bicycle Basics Lessons, Bike Rodeo 5 th Grade Mapping & Communication lessons Monthly Walk/Roll to School Events

CONCERNS &/or POTENTIAL SOLUTIONS:

Please note that all recommendations on the following pages are meant to capture potential solutions to issues or ideas raised during the walk audit. Each of these recommendations are subject to additional design, analysis, outreach, funding, prioritization, and approval by the City and/or Santa Rosa City School District prior to implementation.

Active Transportation Observations and/or Concerns:

- Sebastopol Road between Stony Point Rd. and Lombardi Ln./Ct. is a heavily traveled corridor with two travel lanes in each direction as well as a center two-way left-turn lane. Sebastopol Rd. and Lombardi Ln./Ct. is a signalized intersection with a traffic light and marked crosswalks on the north, south and western leg of the intersection. The city recently added Leading Pedestrian Intervals (LPN's) to that signal, to allow pedestrians more time to cross the street, before vehicles are given a green light, and will be adding a marked crosswalk/signal to the eastern leg of the intersection before the end of March 2025.
- Marked continental style crosswalks with shark-teeth stop bars and pedestrian-activated flashing beacons (RRFB's) are located directly east of both school driveways on Sebastopol Rd. on both the east and west entrances to Laurel Grove Cir./Casa Del Sol gated housing community.
- The volume of traffic and driver behavior on Sebastopol Rd. at pick-up & drop off (and at any time of day for that matter) is a major concern for the school community, and a barrier to safe active travel to school:

- Speeding – drivers do not obey the 25mph “while children are present” speed limit in front of the school.
- Drivers often do not obey pedestrian right-of-way and consistently “blow” through the marked crosswalks near the school driveways, even when the flashing beacons are activated and kids/parents are in the crossings. They may not be paying attention at the multi-lane crossings, may be traveling too fast, or may not see the pedestrians due to glaring east/west sun, fog, a stopped car in the other lane blocking sight views, or other factors. Parent Lucy Diaz shared that she used to park in the Food Max parking lot at the corner of Stony Point Rd. and Sebastopol Rd, walk west on the north side of Sebastopol Rd. and cross at the marked crosswalk east of the eastern school driveway, where one of the Crossing Guards is stationed. However, she stopped walking with her child and baby (who was in a stroller) after nearly getting hit by a car in that crosswalk, despite the Crossing Guard being present.
- Drivers make illegal U-turns on Sebastopol Rd. to drop off their children and/or to avoid congestion in either direction.
- During pick-up/drop off, congestion in the school zone is a major problem. Traffic can back up from the school driveway entrance on Lombardi Ln., all the way down Sebastopol Rd. to the western school driveway exit. Because traffic backs up, parents often pull over on the north or south side of Sebastopol Rd. to drop off their children, blocking the bicycle lane and/or at times resulting in unsafe crossing behaviors (if parking on the north side).
- Staff expressed concern that drivers who exit the Sebastopol Rd. western driveway and turn right (to head east on Sebastopol Rd.) could have conflicts with pedestrians crossing at the marked crosswalk directly east of the driveway. They inquired about whether that leg of the crosswalk could be moved to the west side of the driveway. However, this means that students would need to cross Sebastopol Rd. and the school driveway exit (in front of cars waiting to turn right or left) to get to the school entrance, therefore city staff would not recommend this shift.
- Again, due to congestion and/or convenience, some parents park and/or drop off at or inside the entrance to the Casa Del Sol apartment complex on Laurel Grove Cir., which is private, gated, and prohibited by the complex. The school has directed parents not to park or drop off there, and has established a relationship with Casa De Sol to mitigate this issue, however it still occurs.
- The school driveway entrance is quite narrow, and school bus drivers need to make a very tight turn to maneuver it. The narrowness of the entrance also prevents it from being utilized as both an entrance and exit and at times has resulted in conflicts between drivers.
- Parents have expressed safety concerns about dropping their children off on Gardner Ave. and Lombardi Ct., due to unhoused people parking long term/living in their vehicles. However, participants indicated that the neighborhood has been proactive about reporting these issues to the SRPD, and that the SRPD has been relatively responsive.
- There are no sidewalks on Gardner Ave. between Stony Point Rd. and Keegan Dr.

Active Transportation & Public Transportation Ideas and Potential Solutions:

City of Santa Rosa:

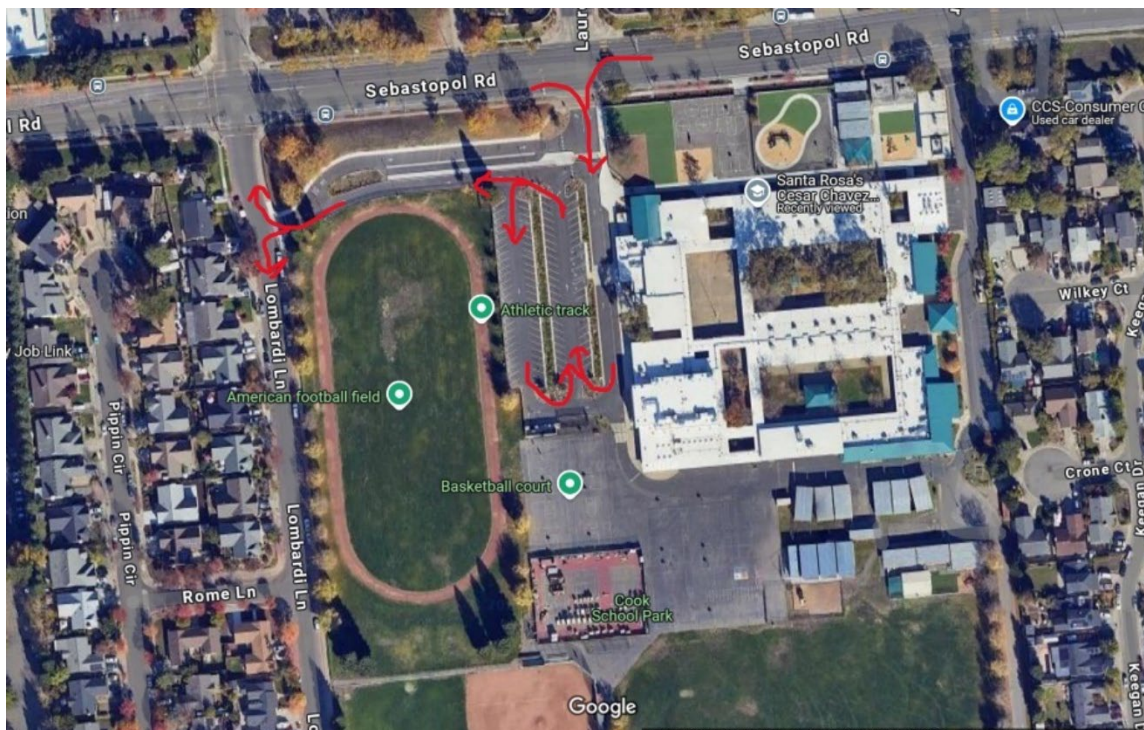
- Consider a “road diet” along Sebastopol Rd. between Corporate Center Parkway and Kenmore Ln. to reduce speeds and improve safety for bicyclists, pedestrians, and drivers. This would entail:
 - Reducing the number of travel lanes to one lane in each direction
 - Narrowing travel lanes to reduce speeds

- Adding protected bicycle lanes with vertical elements to enhance safety for bicyclists and prevent parents stopping and/or parking on Sebastopol Rd. to drop off/pick up students.
- Creating a protected intersection at Lombardi Ln and Sebastopol Rd., by adding curb extensions to the intersection.
- A “demonstration” road diet “pilot” could be implemented in advance of a permanent solution, to assess impact on traffic and safety for all road users. City to consider collaboration with the school/district to move forward with 2-4 week test pilot.
- Should the school successfully divert additional pick-up/drop-off traffic to Kenmore Lane & Gardner Avenue, consider adding speed cushions to slow traffic along Gardner Avenue (speed bumps are already present on Kenmore Lane).

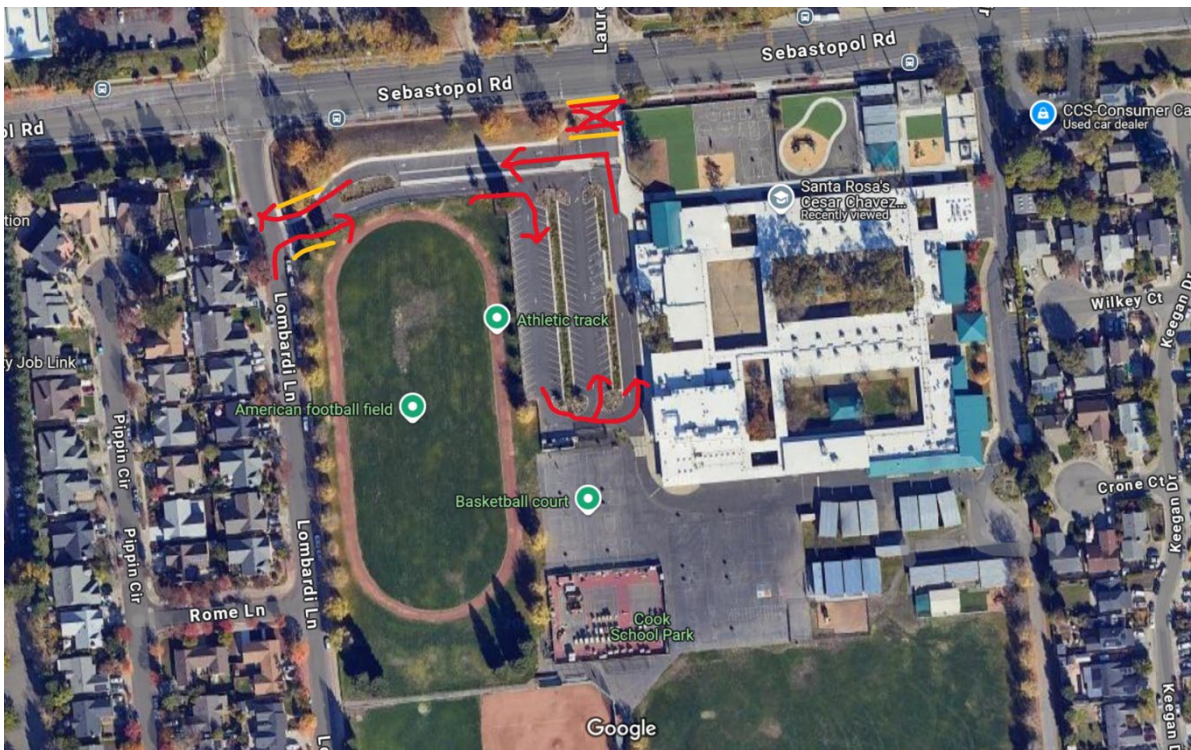
District/School:

- Consider modifications to the traffic flow in the school driveway loop. The following possibilities were discussed at the audit debrief:

Option 1: Reverse the entry/exit point with entry from the Sebastopol Rd. western driveway and exit onto Lombardi Ln. This would address concerns re: vehicles turning right from the driveway exit into the marked crosswalk. This would also potentially mitigate the congestion that occurs at Lombardi Ct/Ln and Sebastopol Rd. due to the traffic signal and back-up at the narrow school driveway entrance on Lombardi Ln. This could still result in congestion east of where it currently occurs on Sebastopol Rd. However, congestion in that location could potentially motivate additional parents to utilize Kenmore Lane/Gardner Ave as a drop off/pick up location.



Option 2: Block/prohibit entry/exit to the school driveway/parking lot from the Sebastopol Rd. western driveway. Widen the current entrance on Lombardi Lane to enable vehicles to both enter and exit, and convert current bus lane to a vehicle travel lane. This would put all school traffic at the signalized intersection of Sebastopol Rd & Lombardi Ln, and could also motivate more parents to choose an alternative drop off/pick up location along Gardner Lane and/or Lombardi Ct.



- Continue to encourage, and perhaps even incentivize, families to avoid Sebastopol Avenue and drop-off/pick up along Gardner Avenue and/or Lombardi Lane. A short “walking school bus” meet up spot could be established at the entrance of the Gardner Ave footpath a few times early in the year, or once a month, with stickers for participants or fun activities (i.e. singing a school song) along the way, to motivate students/parents to get into that habit. Communicate preferred drop-off/pick up processes through multiple channels, including but not limited to Back to School night, school newsletters, school assemblies, printed/electronic maps, and more.
- Continue to establish/promote current (and additional, as suggested above) “Walking School Bus” (WSB) or Bike Train meet up spots, and supporting school “SRTS Champions” (may be school staff or a parent or a team that includes both) to facilitate promotion and community participation. School administration, teacher(s), or even vetted community partners may lead a group of students on the Walking School Bus or Bike Train in the morning on special event days, and also encourage students & parents to walk together on non-event days and as well

as model safe walking behavior. Walking School Buses can operate a couple times a year, once a month, or even once a week during certain months, depending on capacity.

- A Walking School Bus meet up spot has been established and operates once a month from Food Max on Sebastopol Rd. and Stony Point
- A parent group currently operates a parent-led Bike Train from the West End neighborhood to/from school on a daily basis.
- Continue enrolling in/participating in the County SRTS program to participate in ongoing Walk/Roll initiatives (including but not limited to International Walk & Roll to School Day and Ruby Bridges Walk to School Day), and to be eligible to receive SRTS services such as bicycle and/or pedestrian safety education programming, and more.
- Continue to assist the SRTS program in data and information to maintain understanding of travel behavior and barriers to travel at CCLA.
 - Conduct student arrival/departure tallies in September/October (not on a Walk/Roll Day) to gather data on the number and percentage of students who walk, bike, scooter/skateboard, carpool, bus and travel in single-family vehicles in both the morning and afternoon on a typical day.
 - Distribute parent surveys, as requested, to collect more comprehensive feedback on the barriers to walking & bicycling as well as preferred routes to school.
- Share information with students and parents about bus routes as well as students being able to ride the City Bus and SMART Train for free.
- Consider sharing the following SRTS tip-sheet(s) and videos to support safe walking, bicycling, drop-off, and parking & walking:
 - Walking Safety Tip Sheet [English](#) [Spanish](#)
 - Bike Safety Tip Sheet [English](#) [Spanish](#)
 - Driver Awareness for Safe Arrival/Dismissal [English](#) [Spanish](#)
 - E-Bicycles Tip Sheet [English](#) [Spanish](#)
 - Park & Walk Video [English](#) [Spanish](#)
- Report incidents to Santa Rosa Police Department when they occur (i.e., if someone is hit in a crosswalk but not hurt, etc), as well as ongoing concerns, near misses, etc.

Santa Rosa Police Department:

- Monitor traffic on Sebastopol Rd, provide enforcement of illegal behaviors. Continue to support neighborhood in mitigating impact of unhoused populations parking long term on Lombardi Ln. or Gardner Ave.
- Continue enforcing speed and moving violations along Sebastopol Road and Stony Point Road (high injury networks)

Transit Information/Options:

Current CityBus Routes

1. [Route 2](#) and [2B](#) each operate every 30 minutes / thus the campus has service every 15 minutes both east bound and west bound
 - a. Closest CityBus bus stop served by Route 2 & 2B to the campus are;
 - i. Eastbound
 1. Sebastopol Rd. @ Laurel Grove Circle - Bus stop #80154 – bench

- 2. Sebastopol Rd. @ Lombardi Ln. - Bus stop #80153 – shelter and bench
 - ii. Westbound
 - 1. Sebastopol Rd. @ Laurel Grove Circle - Bus stop #80156 – only served by Route 2B – bench
- 2. [Route 15](#) – once an hour – this route is the one bus that doesn't go to the Transit Mall, it operates on Stony Point Rd., and it serves many of the areas that students live
 - i. Northbound
 - 1. Stony Point Rd @ Sebastopol Rd. – Bus stop # 80222 - bench
 - ii. Southbound
 - 1. Stony Point Rd @ Sebastopol Rd. – Bus stop # 80209 – sitting wall
 - 2. Stony Point Rd @ Sebastopol Rd. – Bus stop #80137 – shelter and bench

Potential improvements if the school would like to advocate for improved transit:

- Additional shelter or bench seating at campus bus stop (but not to block view from school campus to bus stop)
- “Real-time Signs”: add solar mounted signs at bus shelters near school on Sebastopol Rd. and Stony Point indicating when bus is arriving (helpful because many students do not have service on their mobile phones)
- Special “school tripper” from Corby Area during mornings/afternoons- could this be possible
- Safety partnership regarding students on the buses (communicating information back and forth re: issues that occur)

City short / long term transit planning

- Route 15 service to double frequency
- Extended service area with Hearn Overcrossing completion to Santa Rosa Ave
- Extended service area south to Mooreland

Safe Routes to School Program Information

- The SRTS program coordinates a Safe Routes to School Task Force to bring together representatives from schools/school districts (school administration, staff and/or parents), city planning/engineering, law enforcement, and SRTS program staff. The goal of the Task Force is to:
 - Seek input from Task Force members and the public, in order to identify barriers to active transportation, opportunities for improvement and collaboration, and set priorities for future infrastructure projects within the city of Santa Rosa.
 - Provide a venue for sharing of program initiatives and projects in the city of Santa Rosa, as well as inter-agency collaboration.

Santa Rosa Task Force meeting notices, agendas, and meeting notes & handouts can be found on our SRTS Task Force page [HERE](#).

- Enrollment for participation in the SRTS program takes place in April each year (deadline is April 30th). Schools must enroll each year to be eligible to receive visiting education services & ongoing technical support. Enrolled, comprehensive sites agree to:
 - Meet with SRTS program staff 3x per year to discuss/plan programming
 - Collect student travel tally data in September
 - Provide data for the SRTS program to enable creation of an annual SRTS “study map” showing where students live in relation to the school

- Engage with/implement a minimum of 5 walk/roll encouragement initiatives per year.
- Support scheduling & implementation of education programming.
- SRTS encouragement “Walk/Roll” initiatives and promotional materials are emailed to enrolled school contacts every month via our SRTS E-Newsletter, and may also be accessed at www.sonomasaferoutes.org. To request to receive our SRTS E-Newsletter directly, email christina@bikeosnoma.org

Appendix: Walk Audit Pictures:



Sebastopol Road is a 5 lane corridor where drivers often speed and do not obey pedestrian right of way in crosswalks



Concerns were expressed that parent drivers exiting onto Sebastopol Rd. from the school driveway potentially have conflicts with pedestrians crossing at the crosswalk directly east of the driveway.



Traffic backs up at the intersection of Sebastopol Rd. and Lombardi Ln/Ct, causing parents to avoid entering the school driveway loop and dropping off on Sebastopol Rd. which blocks the bicycle lane and can result in unsafe crossing situations.



Although safety measures such as shark's teeth and flashing beacons have been installed at the two crossings between the school and Stony Point Rd., participants expressed that crossing Sebastopol Rd. is very dangerous and near misses have occurred. A parent expressed that she chooses to drive b/c she feels unsafe crossing Sebastopol Rd.



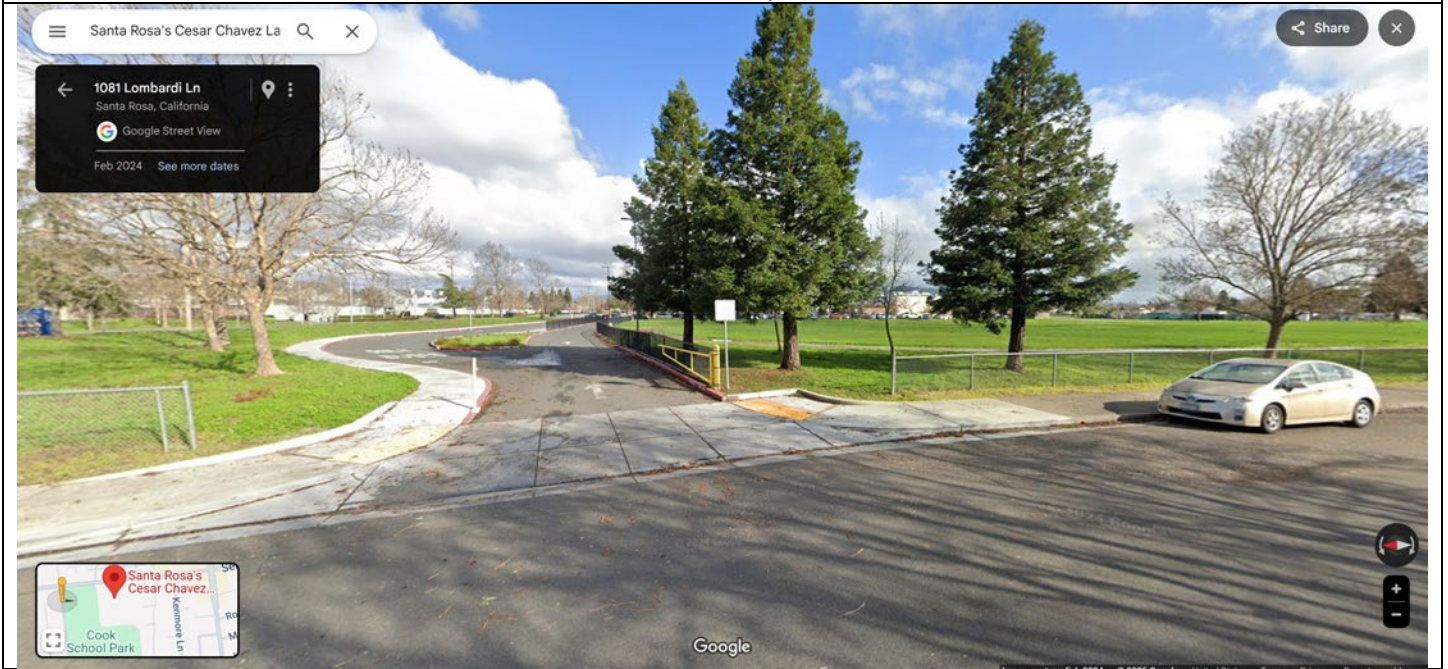
No sidewalks on Gardner Ave. between Stony Point Rd. and Keegan Drive. Shoulder is not pedestrian friendly due to ditches, flooding, etc.



There is a good amount of space for drop-off/pick up along Gardener Ave. between Keegan Dr. and Lombardi Ln, but this area is underutilized, despite school encouragement. Should parents start utilizing Gardner Drive more, installation of speed tables or other traffic calming measure would benefit the neighborhood/school community.



Students can enter campus on foot or on-bike from this path on Gardner Ave. A similar footpath/entry point is located on Lombardi Ln. between Gardner Ave. and the school driveway entrance.



The school driveway entrance is very narrow, a tight turn for buses, and only allows for traffic to flow in one direction. Widening the school driveway would enable the site to shift this to an entry/exit and avoid entry/exit from Sebastopol Rd.