

Public Works Updates

SAFE ROUTES TO SCHOOL TASK FORCE

OCTOBER 19, 2023



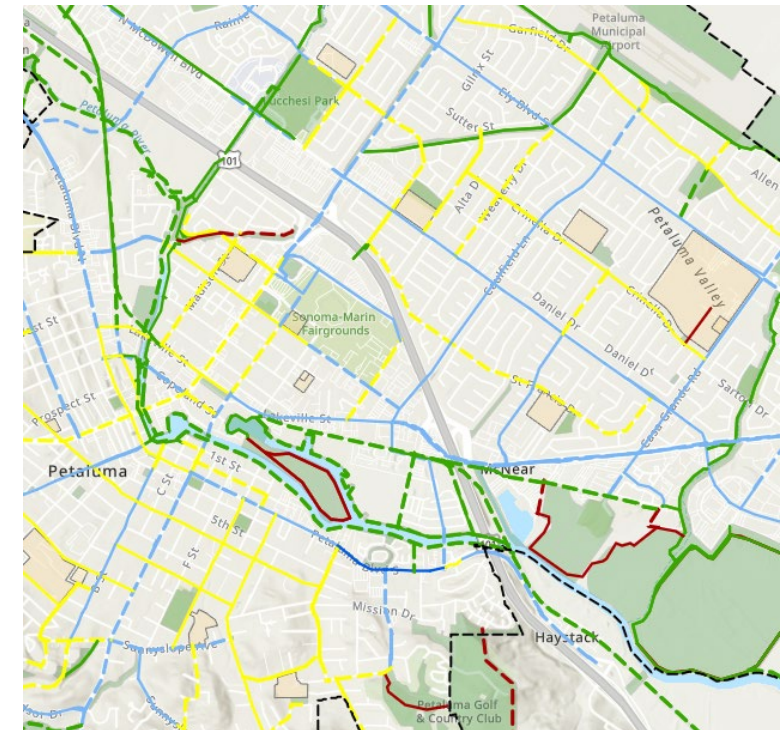
PW Updates

- Active Transportation Plan
- Safe Streets Nomination Program
- Upcoming Roadway Projects
- Contact Information



Active Transportation Plan

- Identifies and prioritizes infrastructure improvements and other efforts to encourage walking & biking
- Maps will include existing bike routes and proposed improvements:
 - New or improved bike routes
 - New or improved crosswalks
 - New or improved multi-use trails
 - Sidewalk gap closures



Active Transportation Plan Open House

- Wednesday, October 25, 6-8 PM at Community Center
- Provide input on proposed projects, vision, goals, and actions
- cityofpetaluma.org/active-transportation-plan



Active Transportation Plan Timeline

	JUL	AUG	SEP	OCT	NOV	DEC	JAN	FEB	MAR
Interactive Map, Feedback Form, & Open House									
PBAC Status Updates & Targeted Feedback									
Draft Plan - Staff Review									
Draft Plan - PBAC Review									
Draft Plan - Planning Commission Review									
Draft Plan - City Council Review									

Safe Streets Nomination Program

- Nominate streets for traffic calming or safety improvements
- Accessible, transparent, data-driven
- Prioritizes streets with speeding and safety issues, esp. near schools and parks
- Now available at cityofpetaluma.org/ssnp



Safe Streets Nomination Program

Scoring Criteria

5 Year Collision History

- 1 point per **solo collision**
- 3 points per **vehicle vs. vehicle collision (no injury)**
- 5 points per **vehicle vs. vehicle collision (injury)**
- 7 points per **vehicle vs. bike/ped collision (no injury)**
- 9 points per **vehicle vs. bike/ped collision (injury)**

Speeding

- 1 point/vehicle **5-9 MPH** over posted speed limit in one hour
- 3 points/vehicle **10-14 MPH** over posted speed limit
- 5 points/vehicle **15 MPH+** over posted speed limit

Proximity to Schools & Parks (Multiplier)

- 1.5x points if within **¼ mile** of school or park
- 1.25x points if within **½ mile** of school/park

NOTE: Staff will exercise additional discretion and professional judgment in assigning project priorities and recommendations.

UPCOMING ROADWAY PROJECTS ON SCHOOL FRONTAGES

Street	Limits	Schools Impacted	Anticipated Construction Start
Maria Dr	Rainier Ave – S McDowell Blvd	Loma Vista, McDowell	2024
Howard St	A St – West St	St. Vincent’s Elementary	2024
Casa Grande Rd	Ely Blvd S – S McDowell Blvd	CGHS	2025
St Francis Dr	Caulfield Ln – S McDowell Blvd	Miwok	2025
N Webster St	Bodega Ave – Western Ave	Valley Vista, PJHS, Spring Hill	2025

Contact Information & Resources

- Transportation Planning & Engineering: safestreeets@cityofpetaluma.org
- Petaluma Transit: transit@cityofpetaluma.org / 707-778-4460 / transit.cityofpetaluma.net
- City Bike Map: cityofpetaluma.org/bikemap
- Report an Issue (Hazards & Quick Fixes): cityofpetaluma.org/issues
- Safe Streets Nomination Program (Traffic Calming & Safety Improvements): cityofpetaluma.org/ssnp