



METROPOLITAN
TRANSPORTATION
COMMISSION

2023
DECEMBER '23
SAFE ROUTES TO SCHOOL PROGRAM



SRTS ACTIVITIES IN PETALUMA - DEC 2023



12/7 – McNear Elementary School, 2nd Grade Pedestrian Safety & 5th Grade Communication/Mapping, lesson 2 of 2

12/13 & 12/20 Loma Vista Elementary 2nd Grade Pedestrian Safety lessons

Various Nov Dates: Petaluma Junior High School – “Drive Your Bike” Modules 6-10 (grade 7 PE)

SAFE ROUTES TO SCHOOL

WALK & ROLL



To SCHOOL Day

FIRST WEEK DECEMBER

CELEBRATE WIN A COLORFUL WACKY WINTER HAT BY COMPLETING OUR
WACKY WINTER WALK & ROLL MONTH **scavenger hunt**



TO PARTICIPATE, VISIT sonomasaferroutes.org

SAFE ROUTES TO SCHOOL
WALK & ROLL
WACKY winter **DEC**

WEDNESDAY

DEC 6th

SAFE ROUTES TO SCHOOL
WALK & ROLL
WACKY winter **DEC**



DESAFÍO DE DICIEMBRE



CAMINAR y RODAR WACKY winter

WACKY Winter WALK & ROLL DECEMBER CHALLENGE

SCAVENGER HUNT

Mark off all the items or places you found, saw or visited on your route to school or anywhere!

STUDENT NAME _____

SCHOOL _____

HOME ROOM TEACHER _____ GRADE _____

Submit completed Scavenger Hunts via email to saferroutes@bikesonoma.org, or via mail to SRFS, PO Box 3088, Santa Rosa, CA 95402. Entries received by Monday, January 15th will be entered into a drawing for a wacky winter hat!

Transportation Safety/Infrastructure

- Striped crosswalk
- Share the Road Sign
- Pedestrian Activated Crossing Signal (Walk/Don't Walk)
- Yellow School Zone Sign
- Bumpy Yellow Curb Ramp
- Bus Stop
- Bike Lane
- Bike Rack
- Another safety item you saw _____

ART & CULTURE

- Unusual Garden Statue
- Birdhouse 
- Colorful Mural or Mosaic
- BIG seasonal decoration
- Windchime
- Little Free Library
- Wackiest piece of art that you saw on your route _____

NATURAL WONDERS

- Fruit or vegetable growing in a front yard
- Rock or other natural item shaped like an animal
- Creek
- Mushroom
- Cloud shaped like an animal or object
- Spider web
- Fluffy cat (type?) _____
- Curly haired dog (type?) _____
- Funny looking bug (describe?) _____
- Colorful bird (colors?) _____

Community

Write in which one you saw or visited below.

- Trail/Multi-Use Path _____
- Fire Station _____
- Grocery Store _____
- Ice Cream or Yogurt Shop _____
- Park or Playing Field _____
- Library _____
- Café _____

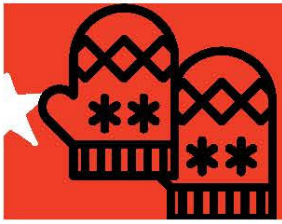


METROPOLITAN
TRANSPORTATION
COMMISSION



sonomasaferroutes.org
SAFE ROUTES TO SCHOOL

  @sonomacountysaferroutes



DESAFÍO DE DICIEMBRE



CAMINAR y RODAR WACKY winter

BÚSQUEDA DE TESOROS

NOMBRE DEL ESTUDIANTE _____

ESCUELA _____

MAESTRO/A DE HOMEROOM _____ GRADO _____


Envía el formulario completo a SRTS por correo electrónico a saferoutes@biakasonoma.org o por correo postal a SRTS, PO Box 3088, Santa Rosa, CA 95402. Los formularios que se reciban antes del lunes 15 de enero entrarán en el sorteo de un gorro Wacky Winter.

¡Marca todos los objetos o lugares que hayas encontrado, visto o visitado en tu ruta a la escuela o a cualquier parte!

Infraestructura/Elementos de seguridad PARA TRANSPORTACIÓN

- Cruce de peatones pintado con rayas
- Señal de "Share the Road"
- Semáforo
- Señal de zona escolar amarilla
- Señal de cruce activada por el peatón (Walk/Don't Walk)
- Parada de autobús
- Señal de límite de velocidad
- Rampa de acera amarilla rugosa
- Carril para bicis
- Estacionamiento para bicis
- Otro elemento de seguridad que hayas visto _____

ARTE Y CULTURA

- Estatua de jardín inusual
- Casa de pájaros 
- Un mosaico o mural colorido
- Una decoración de la temporada GRANDE
- Campanitas de viento
- Pequeña biblioteca gratuita
- La obra de arte más loca que hayas visto en tu ruta _____

MARAVILLAS NATURALES

- Fruta o verdura creciendo en un jardín
- Roca u otro elemento natural con forma de animal
- Riachuelo
- Hongo
- Una nube en forma de animal u objeto
- Una telaraña
- Gato esponjoso (¿tipo?) _____
- Perro de pelo rizado (¿tipo?) _____
- Un bicho chistoso (¿describir?) _____
- Pájaro colorido (¿describir?) _____

COMUNIDAD

Escribe a continuación cuál viste o visitaste.

- Estación de bomberos _____
- Tienda de abarrotes _____
- Nevería/heladería o tienda de yogur _____
- Parque o campo de juego _____
- Biblioteca _____
- Café _____



METROPOLITAN TRANSPORTATION COMMISSION

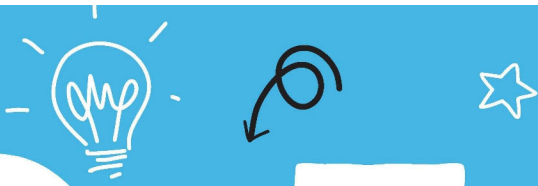


sonomasaferroutes.org
SAFE ROUTES TO SCHOOL



@sonomacountysaferroutes

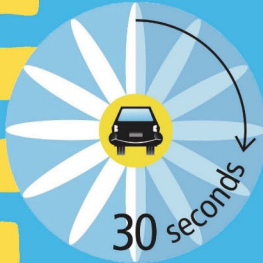




PLEDGE

to be

to be IDLE FREE



PLEDGE to be IDLE FREE

1

SAVE MONEY

30 SECONDS OF IDLING USES MORE FUEL THAN RESTARTING THE ENGINE



2

BREATHE EASIER

CAR EXHAUST CAN AGGRAVATE ASTHMA & DECREASE LUNG FUNCTION, ESP. IN CHILDREN



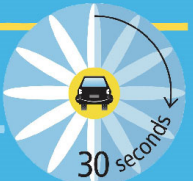
3

KEEP THE SKY BLUE

CAR EXHAUST IS THE #1 SOURCE OF AIR POLLUTION IN THE BAY AREA

4

REDUCE YOUR CARBON FOOTPRINT



SAFE ROUTES TO SCHOOL

SAVE GAS, SAVE MONEY & SPARE THE AIR

TURN off ENGINE WHEN WAITING MORE THAN 30 SECONDS



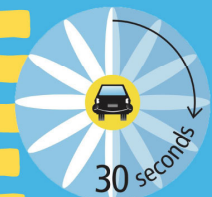
METROPOLITAN TRANSPORTATION COMMISSION

SONOMASAFEROUTES.ORG

PLEDGE

to be

to be IDLE FREE



SONOMASAFEROUTES.ORG

SAFE ROUTES TO SCHOOL

TURN off ENGINE WHEN WAITING MORE THAN 30 SECONDS

7

Facebook

Twitter

SRTS Lead Agency



SRTS Local Partners



PROMOTIONAL RESOURCES FOR SCHOOLS/TEACHERS:

- Idle-Free Educational [Video PSA](#)
- Full Page Flyer 8 1/2 x 11 ([English PDF](#)) ([Spanish PDF](#)) ([English JPEG](#)) ([Spanish JPEG](#))
- Instagrammable Promotional Image (square) ([English JPEG](#)) ([Spanish JPEG](#))
- Instagrammable "Idle-Free Educational Facts" Image (square) ([English JPEG](#)) ([Spanish JPEG](#))
- Facebook Event or Website header (rectangle) ([English JPEG](#)) ([Spanish JPEG](#))
- Website/Newsletter banner (long, narrow rectangle) ([English JPEG](#)) ([Spanish JPEG](#))
- Walk & Roll, Good for You, Good for the Earth logo [Eng](#) [Span](#)
- Walk & Roll, Good for You, Good for the Earth Rectangular Image (banner) [Eng](#) [Span](#)



Idle Free Commercial



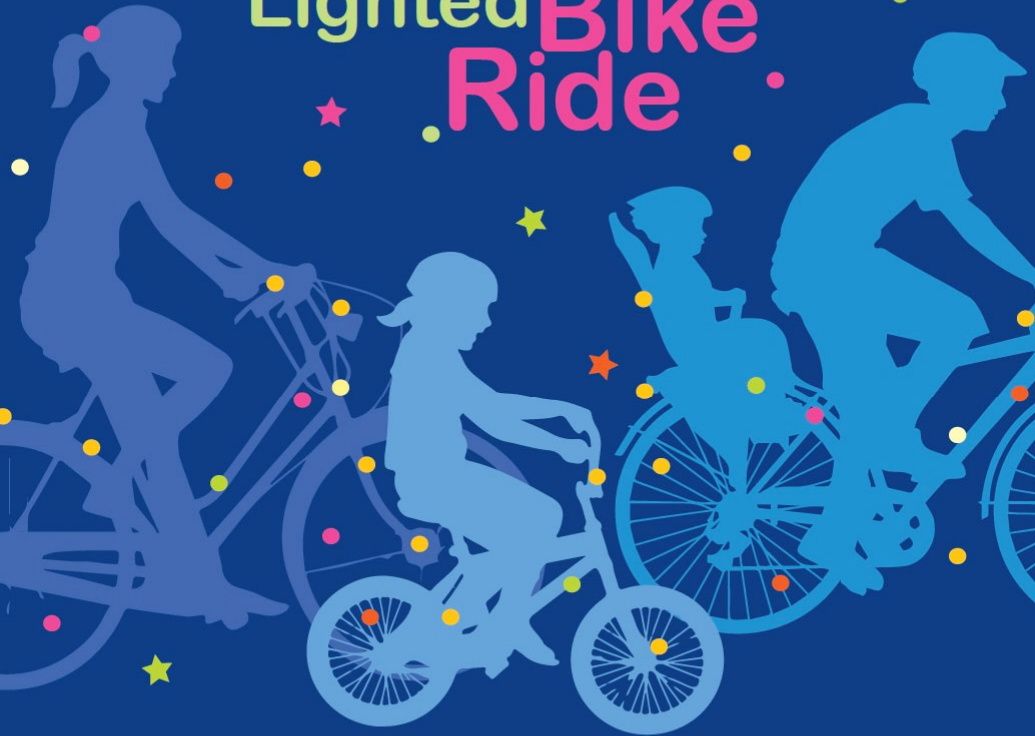
0:28 / 1:38

Scroll for details



Decorate your bike and join your friends for the

2nd Annual Petaluma Holiday Lighted Bike Ride



All ages ★ Family-friendly

Friday Dec 22, 5:30 PM ★ Start/Finish at Aqus Cafe

Route TBD ★ Length 60-75 minutes

Bring your bike lights, helmets, bells!

Sponsored by: 350 Petaluma, Aqus Community Foundation, Big Bowl Bike Shop, Bike Petaluma, Blue Zones Petaluma, Cool Petaluma, Cozza Team, Cycle Chvrch Cycles, First Fridays at Five, Grand Central Petaluma, Jupiter Foods, Lunchette, Mike's Bikes, Out West Garage, Pedaluma, Petaluma Wheelmen, Safe Streets Petaluma, Smith & Bergen Cycles, Urban Chat/KBYG

Decora tu bicicleta y únete a tus amigos para

2º Anual Petaluma Día festivo iluminado Paseo en Bicicleta



Todas las edades

Diversión para toda la familia

Viernes, 22 de diciembre, 5:30 p. m.


Salida/finalización en Aqus Café

Ruta por determinar ★ Longitud 60-75 minutos

¡Traiga las luces, cascós y timbres de su bicicleta!

Patrocinado por: 350 Petaluma, Aqus Community Foundation, Big Bowl Bike Shop, Bike Petaluma, Blue Zones Petaluma, Cool Petaluma, Cozza Real Estate Team, Cycle Chvrch Cycles, First Fridays at Five, Grand Central Petaluma, Jupiter Foods, Lunchette, Mike's Bikes, Out West Garage, Pedaluma, Petaluma Wheelmen, Safe Streets Petaluma, Smith & Bergen Cycles, Urban Chat/KBYG

SRTS TRAVEL PLAN TEMPLATE

A		B		C		D		E		F		G		H		I		J	
1		 MCDOWELL ELEMENTARY SCHOOL SRTS OVERVIEW last update: 11/23																	
2		2023-2024																	
3		SRTS SCHOOL SINCE		2023		SAFE ROUTES TO SCHOOL ENGAGEMENT 2023-24													
4		School District		Petaluma City School District		Encouragement				Education				Community Engagement					
5		Principal		Ruth Miller		International Walk & Roll to School Day				2nd Grade Pedestrian Safety lessons				Bikemobile visit					
6		SRTS Champion		McKenzie Anderson (teacher), Emily Oh (parent)		Ruby Bridges Walk to School Day				4th Grade Bike Basics Lessons				Champion Meetings					
7		LOCATION & STUDENT BODY				Bike to School Day				4th Grade Bike Rodeo				Family Bike Workshop/ride					
8		Address		421 South McDowell Ave		additional Monthly Walk/Roll Days				5th Grade Mapping/Communication lessons				Outreach at school event					
9		Grade Levels		Tk-6		Golden Sneaker Awards				Whole School assembly				Parent presentation (PTA)					
10		Total Enrollment		262		Participation in Monthly Challenges								Staff Presentation					
11		Students Qualifying for free & reduced lunch meals		85%		Walking School Bus meet up spot(s)													
12		School Type (neighborhood or magnet)				Bike Train													
13						Youth Engagement													
14		GIS MAP DATA		2023-24		link to PDF of School Snapshot													
15		Students living within 1/4 mile																	

AGENDA TOPICS, SUGGESTIONS, IDEAS FOR FUTURE TASK FORCE MEETINGS?

