

Petaluma High School Walk Audit Recap & Discussion

SAFE ROUTES TO SCHOOL TASK FORCE

JANUARY 18, 2024



Petaluma High School Walk Audit

- Thursday, February 8, 8-10 AM
- Participants from Safe Routes to Schools, City (Public Works & Police), Petaluma High School
- Focused on highlighted area surrounding campus



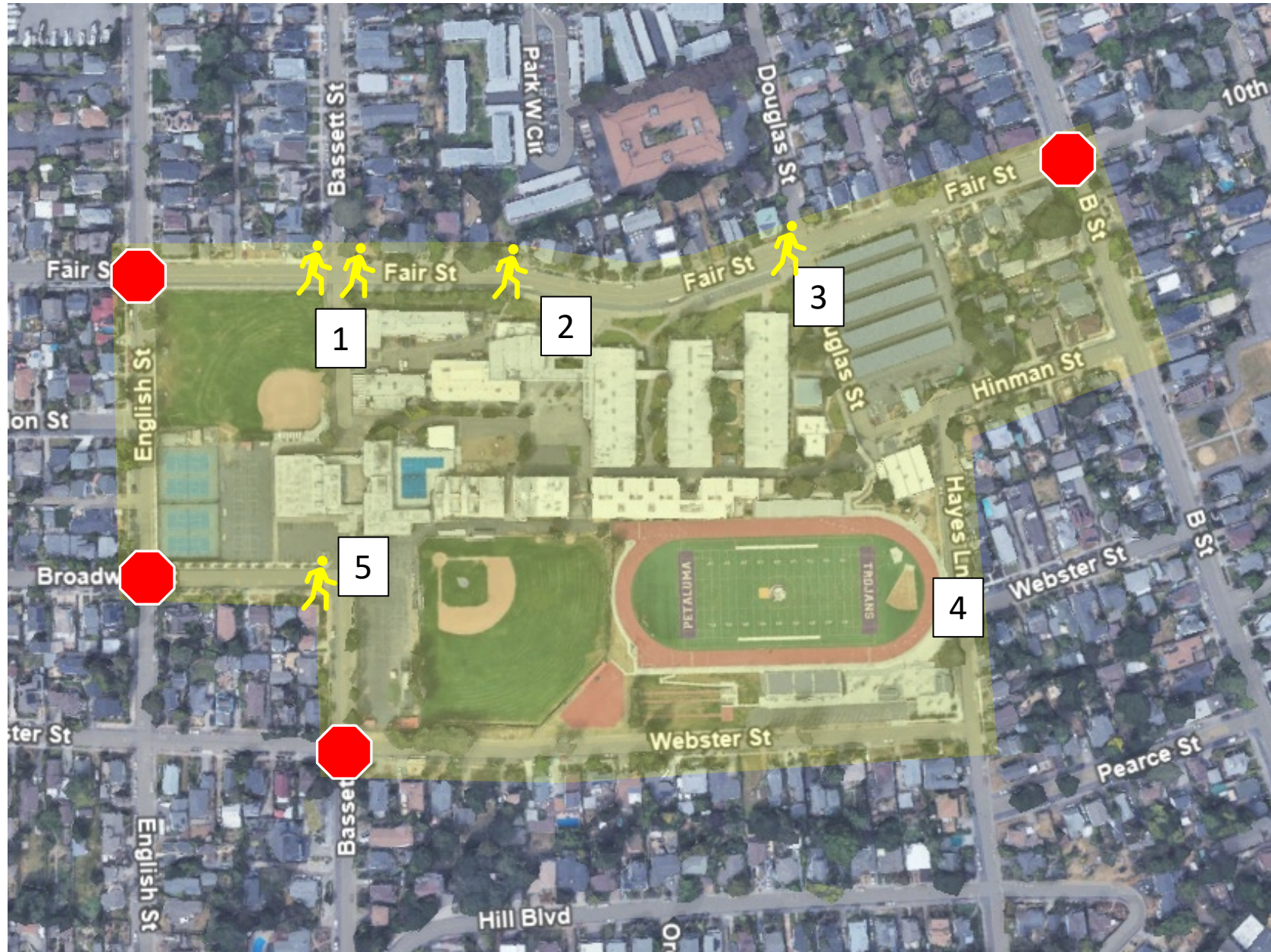
Campus Access Points

- 1) Bassett Street @ Fair Street
- 2) Fair Street entrance (primary bus and vehicle loading zone)
- 3) Douglas Street @ Fair Street (student parking lot)
- 4) Hayes Lane @ Webster Street
- 5) Bassett & Broadway Street

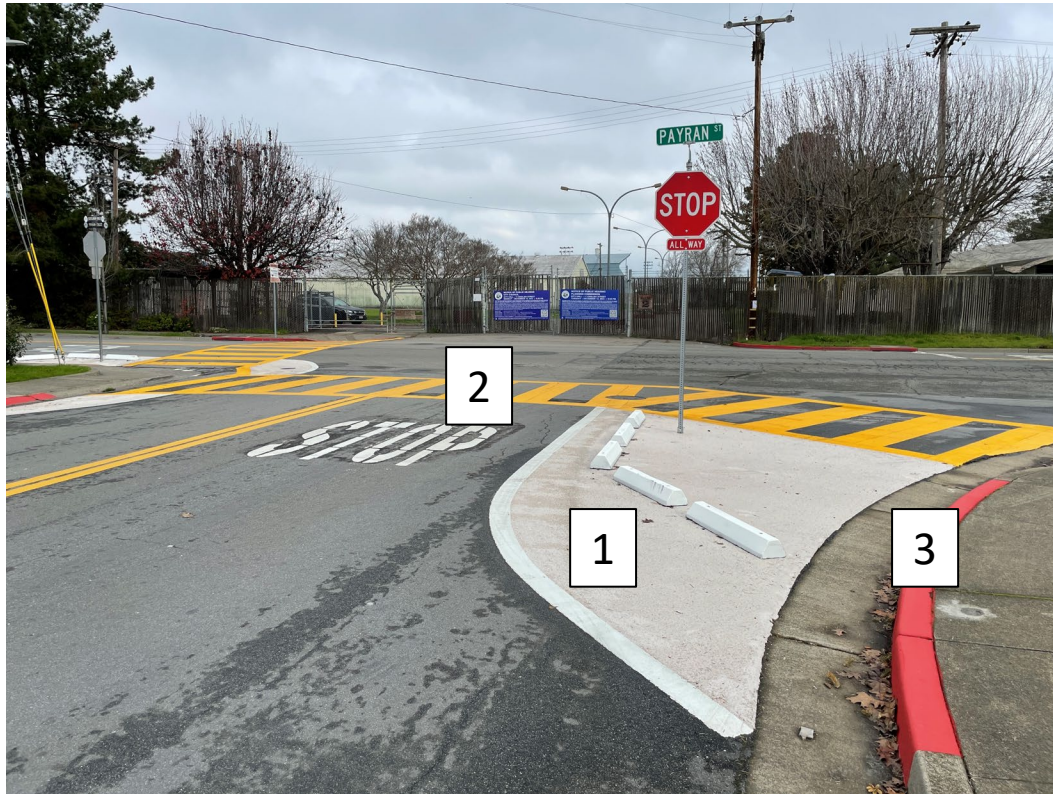


Campus Access Points

- 1) Bassett Street @ Fair Street
- 2) Fair Street entrance (primary bus and vehicle loading zone)
- 3) Douglas Street @ Fair Street (student parking lot)
- 4) Hayes Lane @ Webster Street
- 5) Bassett & Broadway Street



Typical Intersection Enhancements



- 1) Painted curb extension (“bulbout”)
- 2) Ladder crosswalk; yellow for school zone
- 3) Parking prohibition (“daylighting”)

Typical Intersection Enhancements



- 1) Concrete curb extension (“bulbout”)
- 2) Rapid-flashing beacon

Add Bulbouts & Daylighting



NOTE: Flashing beacon and upgraded signage also recommended at Douglas Street crosswalk

Other Challenges Observed

- 1) Speeding along Fair Street outside of pick-up/drop-off hours
- 2) Circulation for student parking lot
- 3) Broadway/Bassett intersection
- 4) Hayes/Webster intersection





Fair Street:

Explore traffic calming options, including narrowed lanes and speed cushions

Note: bulbouts and other crosswalk enhancements at existing crosswalks would likely help slow traffic



Garfield Drive: Possible template for Fair Street?



Student Parking Lot:

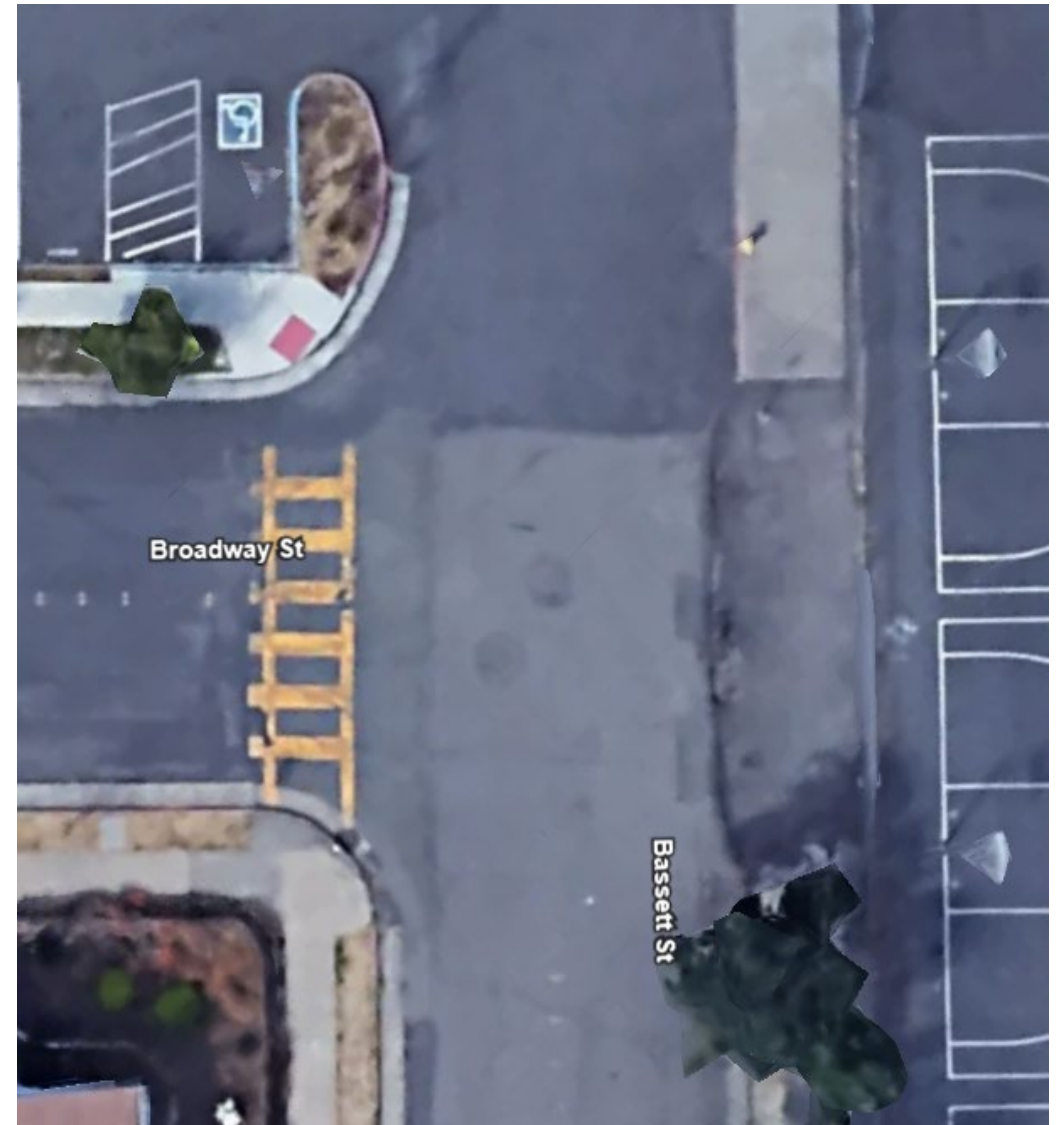
Consider formalizing one-way operation and improving entrance/exit with red curbs (daylighting) and crosswalks





Broadway/Bassett Intersection:

- 1) Prohibit parking and add bulbouts near corners and along Bassett Street
- 2) Add STOP striping and ladder crosswalk at driveway
- 3) Refresh double yellow lines within 50' of intersection

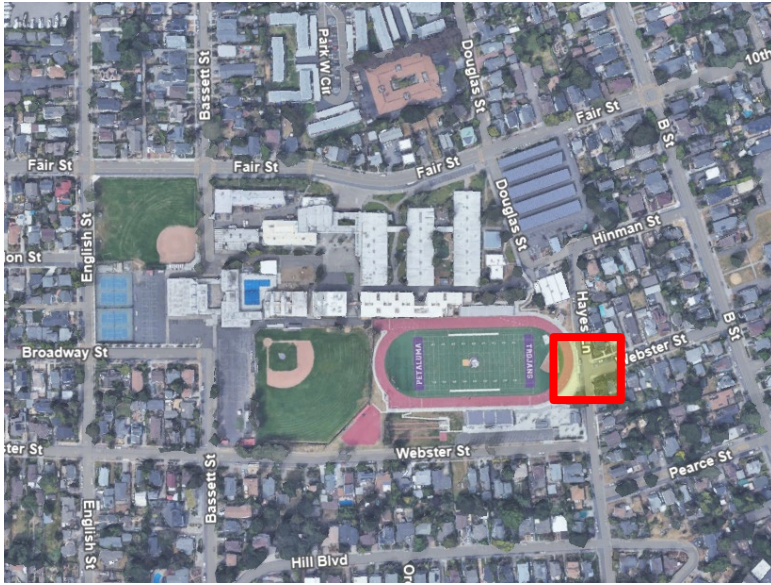




Broadway/Bassett Intersection:

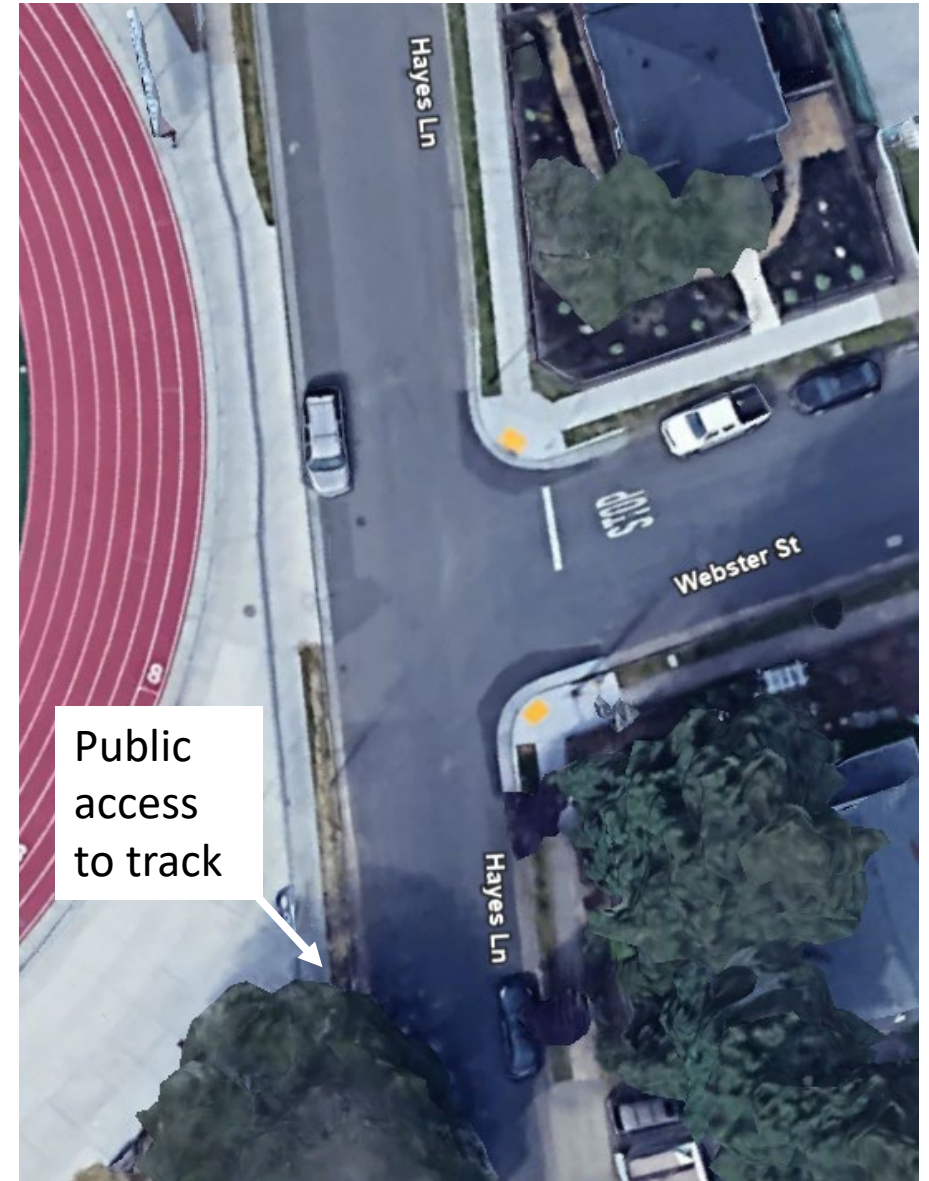
- 1) Prohibit parking and add bulbouts near corners and along Bassett Street
- 2) Add STOP striping and ladder crosswalk at driveway
- 3) Refresh double yellow lines within 50' of intersection





Hayes/Webster Intersection:

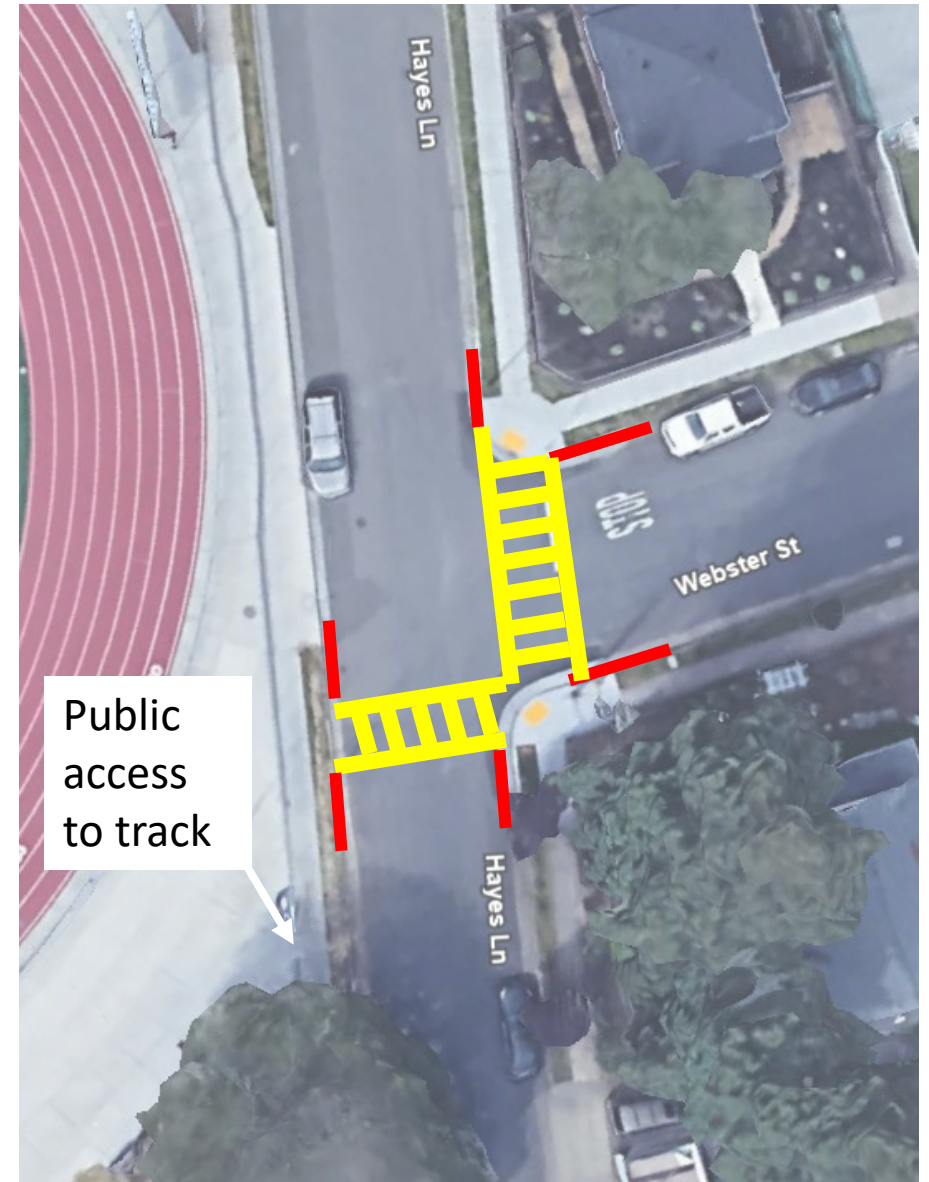
- 1) Prohibit parking near corners
- 2) Add crosswalks across Webster and Hayes to track access gate





Hayes/Webster Intersection:

- 1) Prohibit parking near corners
- 2) Add crosswalks across Webster and Hayes to track access gate



Additional Feedback

- *Add notes here*

Remaining Task Force Dates & Schools for 2023-24 School Year

- March 21: Loma Vista
- April 18: La Tercera
- May 16: Miwok
- June 20: Casa Grande

*All meetings from 4-5:30 PM at the Community
Center (320 N. McDowell Blvd.)*

Contact Information & Resources

- Transportation Planning & Engineering: safestreets@cityofpetaluma.org
- Petaluma Transit: transit@cityofpetaluma.org / 707-778-4460 / transit.cityofpetaluma.net
- City Bike Map: cityofpetaluma.org/bikemap
- Report an Issue (Hazards & Quick Fixes): cityofpetaluma.org/issues
- Safe Streets Nomination Program (Traffic Calming & Safety Improvements): cityofpetaluma.org/ssnp
- Slow the Fast Down Campaign: cityofpetaluma.org/slowthefastdown

Walk Audit Recommendations

Please note that all recommendations are meant to capture **possible** solutions to issues or ideas raised during the walk audit. Each of these recommendations are subject to additional design, analysis, outreach, funding, prioritization, and approval by the City and/or Petaluma City Schools prior to implementation.