

Casa Grande HS Walk Audit Recap & Discussion

SAFE ROUTES TO SCHOOL TASK FORCE

JUNE 20, 2024



Walk Audit Recommendations

Please note that all recommendations are meant to capture **possible** solutions to issues or ideas raised during the walk audit. Each of these recommendations are subject to additional design, analysis, outreach, funding, prioritization, and approval by the City and/or Petaluma City Schools prior to implementation.

CGHS Walk Audit

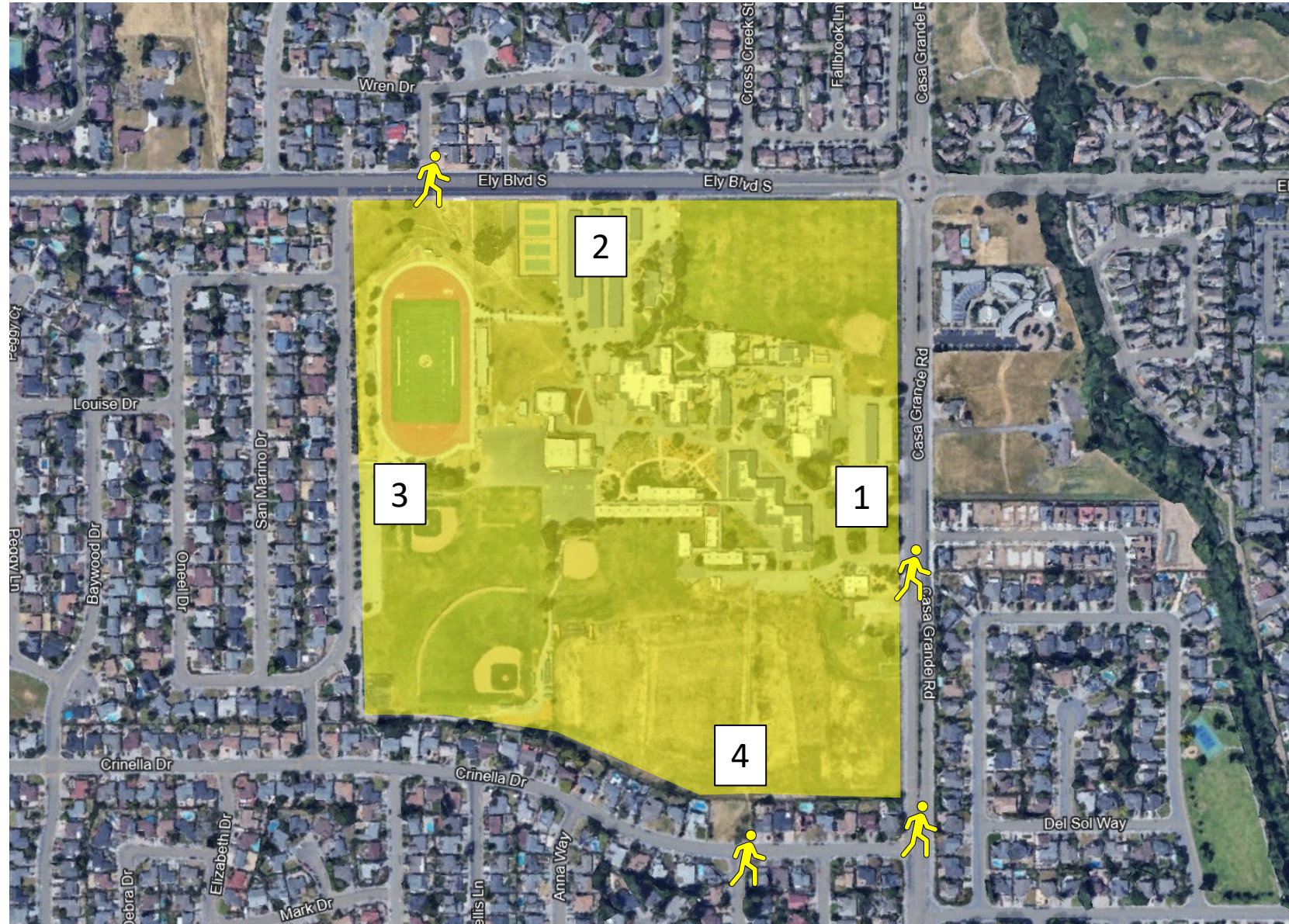
- Monday, June 3, 8 AM*
- Participants from Safe Routes to Schools, Cool Petaluma, City (Public Works & Police), CGHS
- Focused on Ely Blvd, Casa Grande Rd, & Juliet Dr

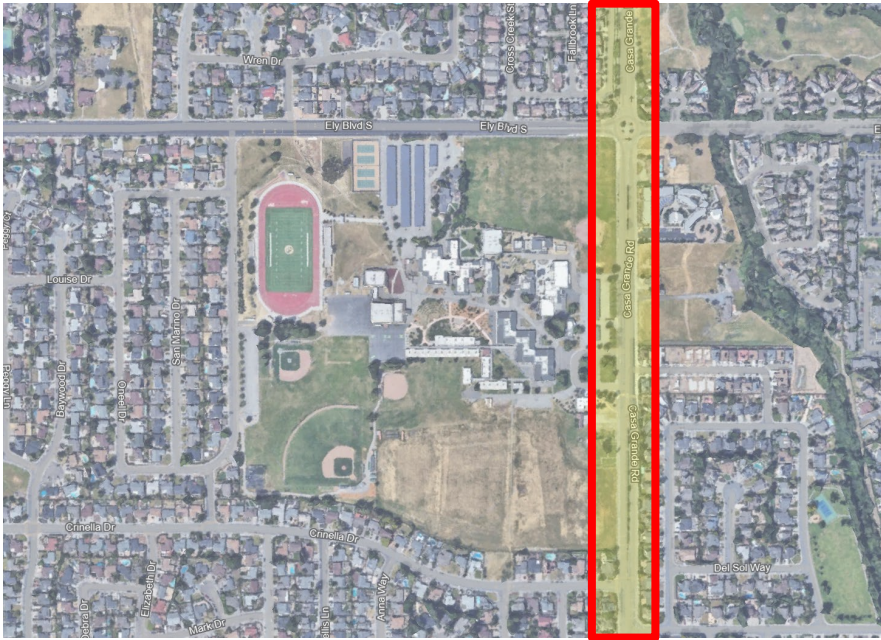
*Senior ditch day; lower than typical traffic volume



Campus Access Points

- 1) Casa Grande Rd
- 2) Ely Blvd
- 3) Juliet Dr
- 4) Crinella Dr





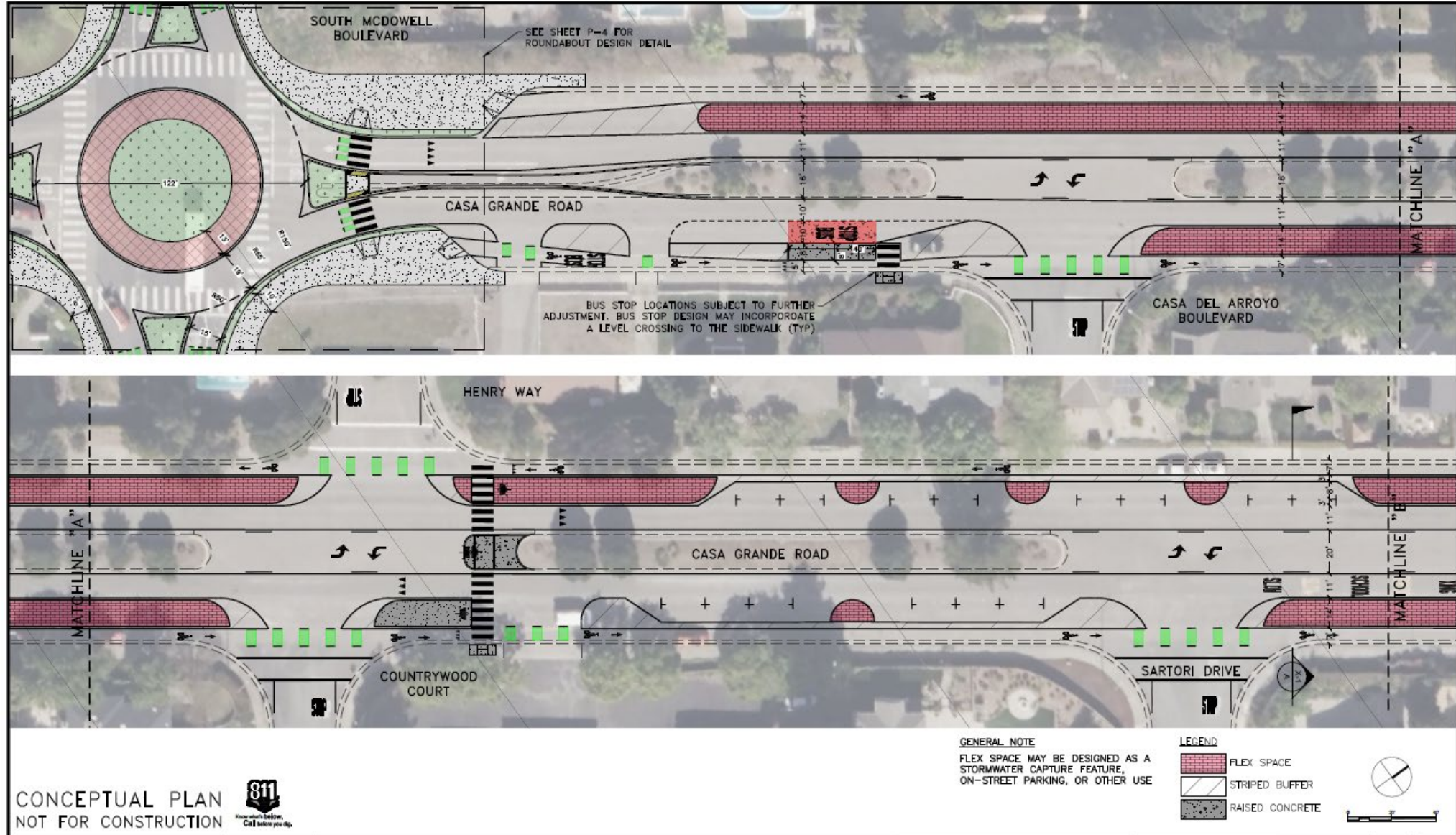
Casa Grande Rd. – Issues & Observations

- 5-lane road encourages speeding; is not bike/ped-friendly
- During drop-off/pick-up: double parking, U-turns, congestion
- Driveway loop is congested
- Intersection with S. McDowell Blvd. is challenging to navigate

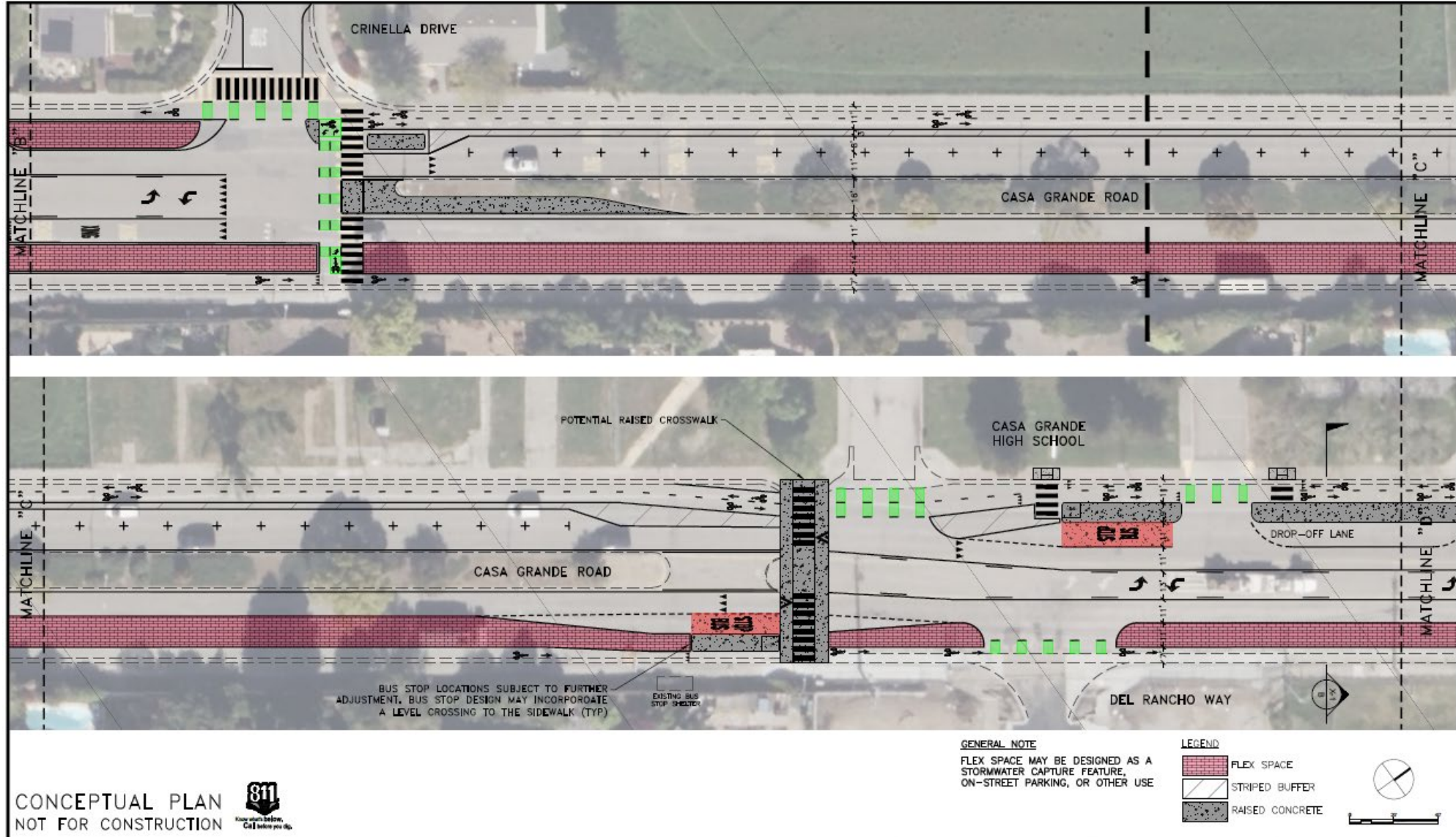
CASA GRANDE ROAD - RECONFIGURATION CONCEPT



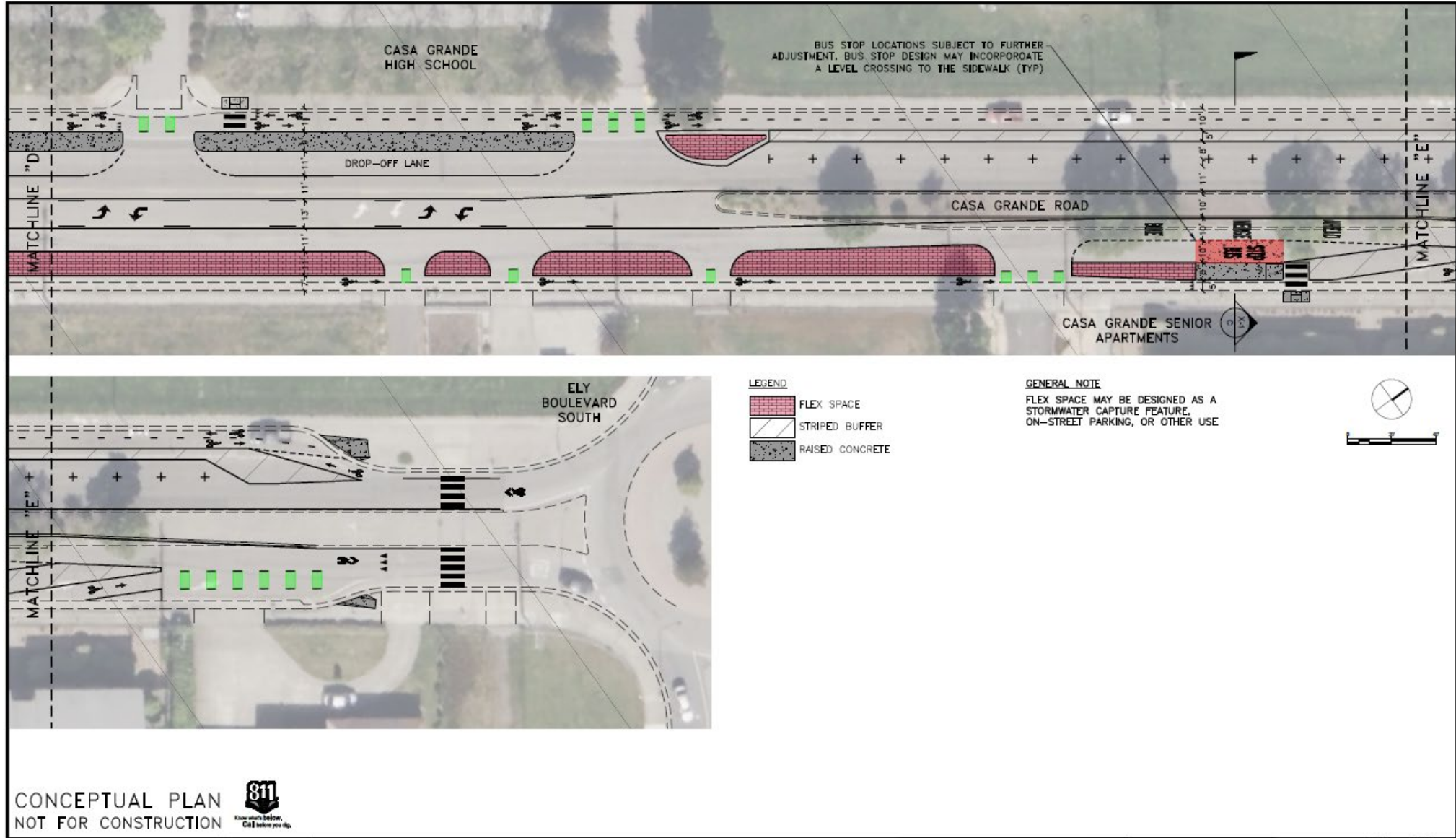
CASA GRANDE ROAD - RECONFIGURATION CONCEPT



CASA GRANDE ROAD - RECONFIGURATION CONCEPT

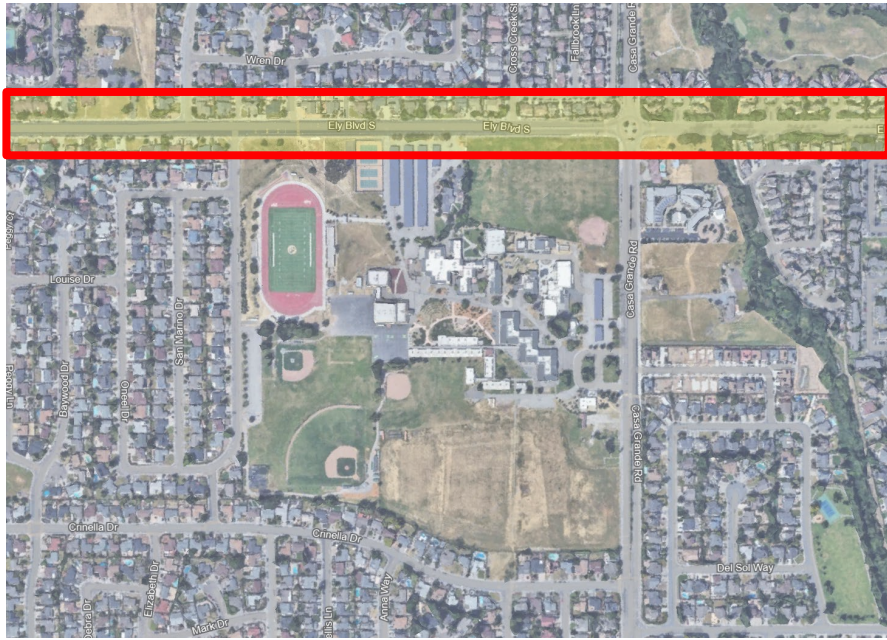


CASA GRANDE ROAD - RECONFIGURATION CONCEPT



Casa Grande Road Complete Streets Project

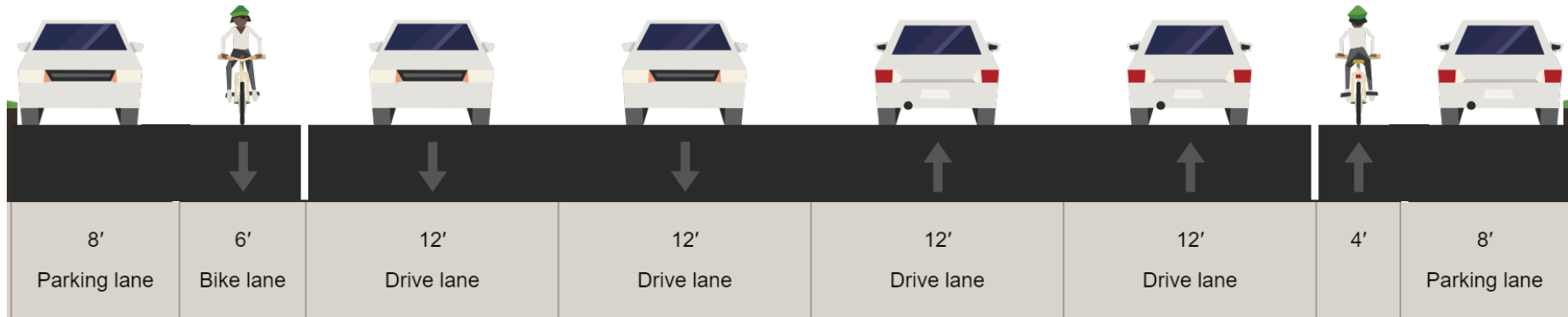
- Currently scheduled for construction in 2027 (subject to change pending funding and City Council approvals)
- Community engagement to take place in 2025-2026; will be noticed through City channels, project webpage, postcards along/near corridor, & direct outreach to CGHS/PCS



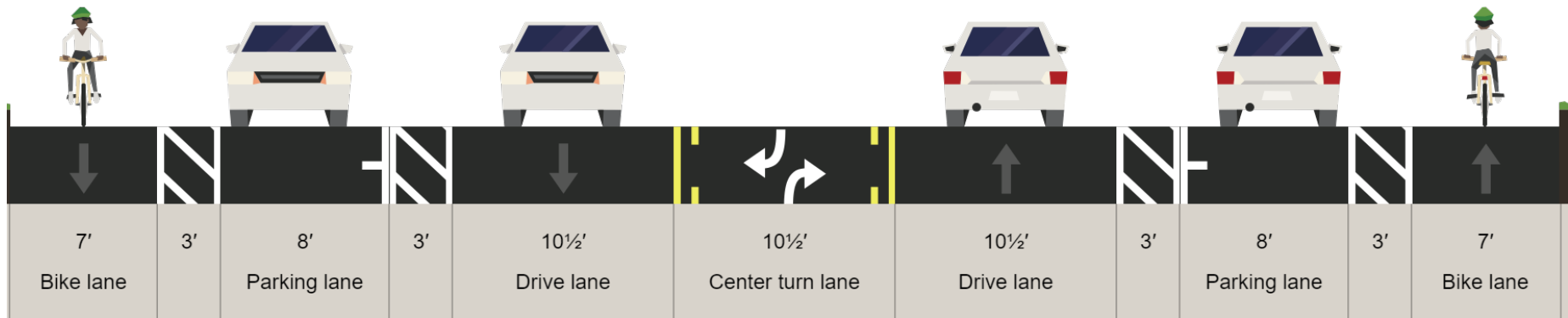
Ely Blvd. S. – Issues & Observations

- 4-lane road encourages speeding; is not bike/ped-friendly
- During drop-off/pick-up: queueing in southbound bike lane and inner northbound vehicle lane (for left turns)

ELY BOULEVARD SOUTH



Existing Configuration (facing north)



Potential Configuration

Campus Access Improvements

- Opportunities to improve bicycle/pedestrian pathways into campus
- Possible candidate for bond funds?



Additional Feedback

- *Add notes here*

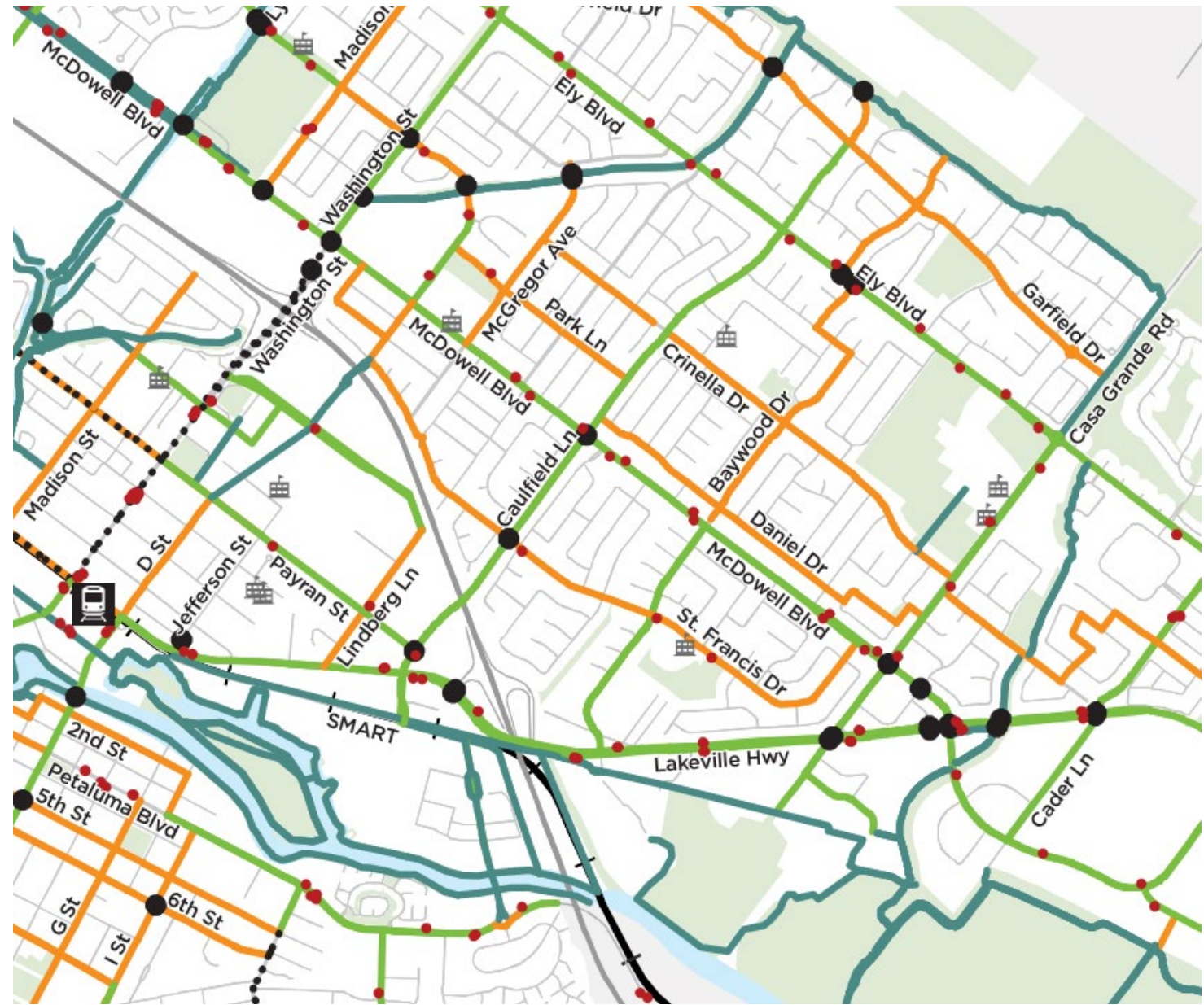
Contact Information & Resources

- Transportation Planning & Engineering: safestreets@cityofpetaluma.org
- Petaluma Transit: transit@cityofpetaluma.org / 707-778-4460 / transit.cityofpetaluma.net
- City Bike Map: cityofpetaluma.org/bikemap
- Report an Issue (Hazards & Quick Fixes): cityofpetaluma.org/issues
- Safe Streets Nomination Program (Traffic Calming & Safety Improvements): cityofpetaluma.org/ssnp
- Slow the Fast Down Campaign: cityofpetaluma.org/slowthefastdown

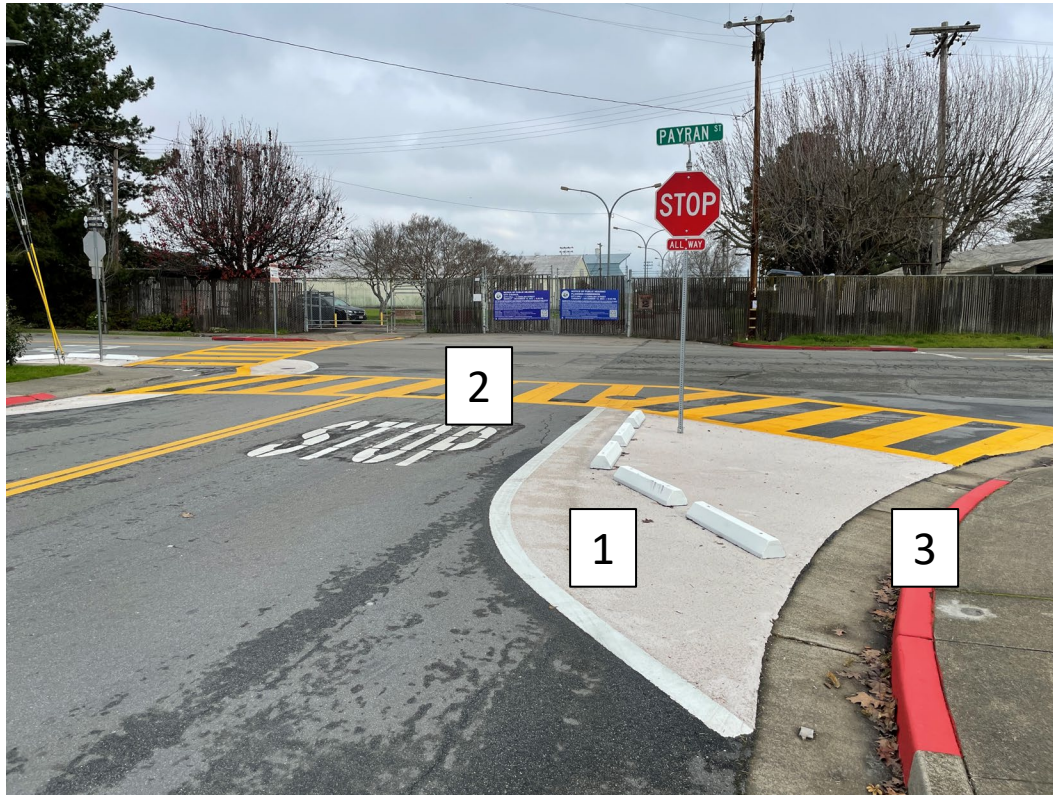
Envisioned Bicycle Network

- Trails - off-street paths for bicycles and/or pedestrians, paved or unpaved
- On-Street Bike Lanes - painted on pavement with or without buffers or barriers from vehicle traffic
- Neighborhood Greenways - signage, lane markings, and traffic calming measures on small, residential streets for bikes and vehicles to share the road
- Facility type to be determined pending corridor study

- Intersection Improvements
- Bus Stops
- 🚏 Petaluma SMART Station
- 🚏 Petaluma North SMART Station (planned)
- 🌳 Parks
- 🏫 Schools



Typical Intersection Enhancements



- 1) Painted curb extension (“bulbout”)
- 2) Ladder crosswalk; yellow for school zone
- 3) Parking prohibition (“daylighting”)

Typical Intersection Enhancements



- 1) Concrete curb extension (“bulbout”)
- 2) Rapid-flashing beacon



Bulbout at Payran & Jefferson