

Cherry Valley & Grant Elementary Walk Audits

SAFE ROUTES TO SCHOOL TASK FORCE

MARCH 20, 2025



Cherry Valley Walk Audit



- Tuesday, February 11, 8 AM
- Participants from Safe Routes to Schools, City (Public Works & Police), Cherry Valley
- Focused primarily on Cherry Street and Elm Drive

Cherry Valley Campus Access Points

- 1) Cherry Street
- 2) Cindy Lane



Existing Circulation



Circulation Alternative



Parking & Loading Reconfiguration Options





Feedback on Surrounding Intersections

- Red curbs needed at all intersections in accordance with state law
- Accessible curb ramps also needed (typically installed with paving projects)
- Biggest concern for pedestrian safety was at Elm Drive and Cherry Street

Quick-Build Bulbouts / Curb Extensions



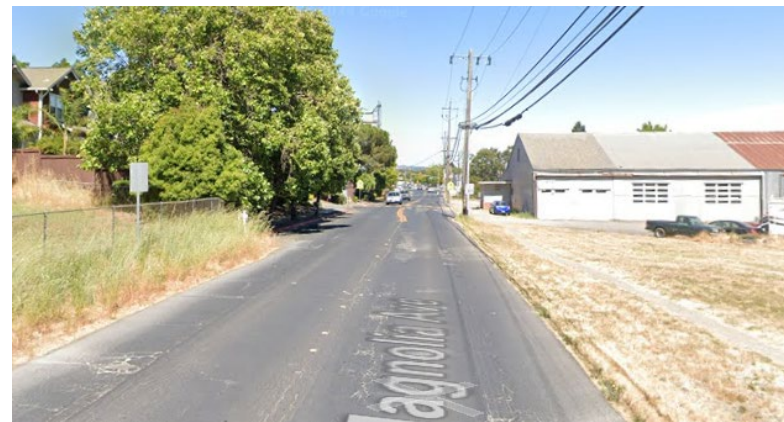
Improve visibility, shorten crossing distance, slow vehicle turning movements

Magnolia Avenue Sidewalk Gaps: Paula Lane to Elm Drive



Magnolia Avenue: City Limits to Petaluma Blvd. N

- Varying width creates challenges for implementing low-cost bike improvements
- Corridor study needed to identify potential near and long-term bicycle and pedestrian improvements



Additional Feedback – Cherry Valley

- Speeding on Elm (Schuman to Cherry – at curve)
- Additional crosswalk at Antone
- Add parking stalls to Antone (angled?)
- Traffic calming/intersection improvements at Antone/Magnolia
- Left turn pocket at Magnolia/Keokuk
- Speeding on Magnolia
- Sidewalk width – utility poles and street signs
- “Bikes May Use Full Lane” signage & hi-viz sharrows on Magnolia – especially at pinch points and curves
- Narrow section of Cherry Street presents challenges for people walking/biking

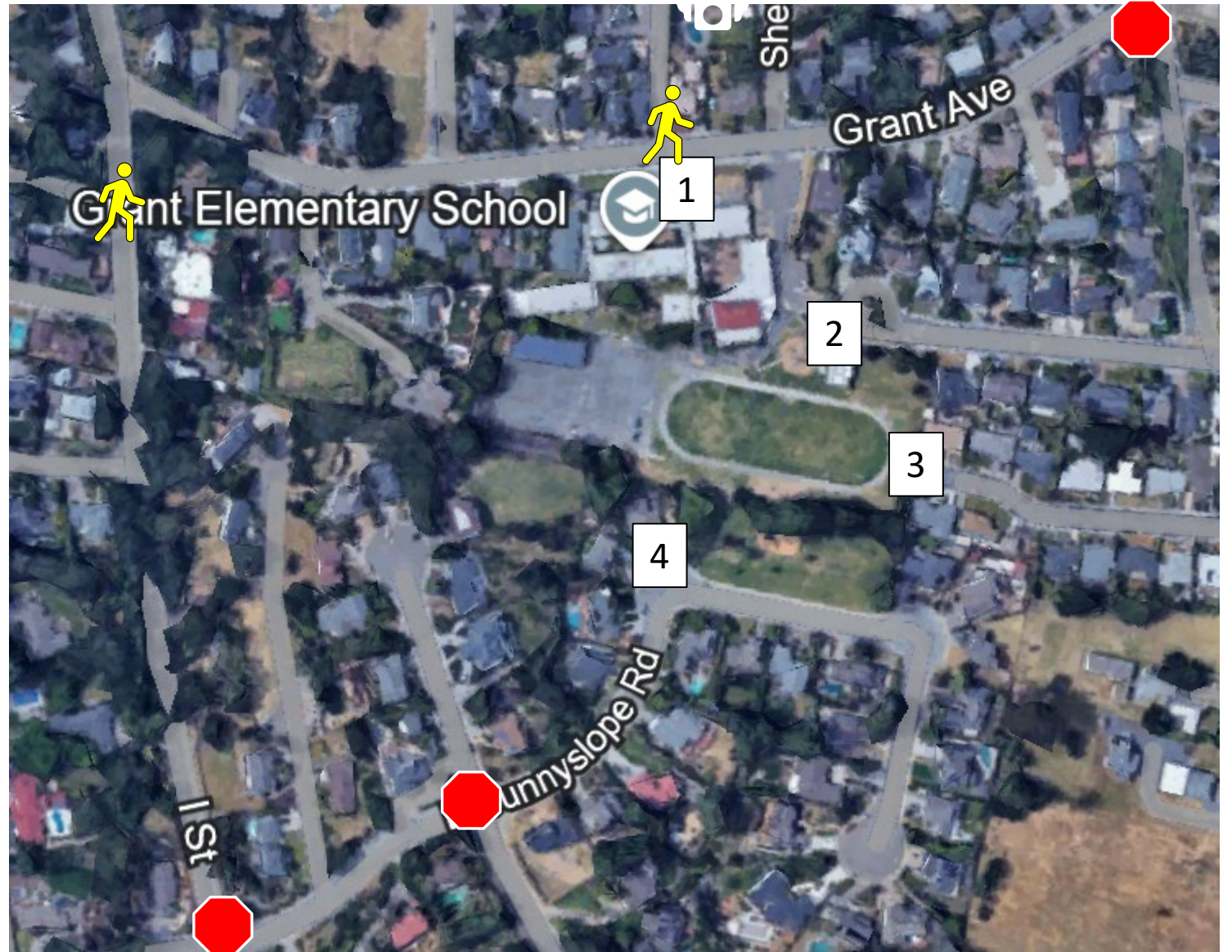


Grant Walk Audit

- Tuesday, February 25, 8 AM
- Participants from Safe Routes to Schools, City (Public Works & Police), Grant
- Focused primarily on Grant Avenue, Mt. View Avenue, McNear Avenue, & I Street

Grant Elementary Campus Access Points

- 1) Grant Avenue
- 2) McNear Avenue
- 3) Phillips Avenue
- 4) Sunnyslope Road



Loading Reconfiguration Options

WIDEN SIDEWALK OR RELOCATE
BUS STOP TO SCHOOL FRONTAGE

EXTEND LOADING ZONE
FROM X-WALK TO SCHOOL
DRIVEWAY

CONSIDER USING PARKING
LOT AS DROP-OFF LOOP
(ENTER ON GRANT, EXIT
ON MCNEAR)





Grant Avenue & Mt. View Avenue

Large intersection with long crossing distance across Grant Avenue

Potential Improvements:

- Add bulbouts and move northbound stop sign on Mt. View ~30' north



Mt. View Avenue & McNear Avenue

Concerns about speed of cars turning right from McNear onto Mt. View

Potential Improvements:

- Add bulbouts



Additional Feedback on Nearby Intersections & Crosswalks

- Red curbs needed at all intersections in accordance with state law
- Accessible curb ramps also needed at several intersections (typically installed with paving projects)
- Flashing beacon and centerline “yield to pedestrian” sign requested on I Street at Independence Way (left)
- Concerns about stop sign compliance on I Street at Sunnyslope Road (right)

Grant Avenue Sidewalk Gap: Across from View Oak Court to I Street



McNear Avenue Sidewalk Gaps: Country Club Drive to Grant Elementary



Additional Feedback – Grant

- Additional crosswalk on Grant near staff lot
- Reconfigure Grant/I to improve sight distance from Grant onto I

Contact Information & Resources

- Transportation Planning & Engineering: safestreets@cityofpetaluma.org
- Petaluma Transit: transit@cityofpetaluma.org / 707-778-4460 / transit.cityofpetaluma.net
- City Bike Map: cityofpetaluma.org/bikemap
- Report an Issue (Hazards & Quick Fixes): cityofpetaluma.org/issues
- Safe Streets Nomination Program (Traffic Calming & Safety Improvements): cityofpetaluma.org/ssnp
- Slow the Fast Down Campaign: cityofpetaluma.org/slowthefastdown

Walk Audit Recommendations

Please note that all recommendations are meant to capture **possible** solutions to issues or ideas raised during the walk audit. Each of these recommendations are subject to additional design, analysis, outreach, funding, prioritization, and approval by the City and/or Petaluma City Schools prior to implementation.