

# Miwok Walk Audit Recap & Discussion

---

SAFE ROUTES TO SCHOOL TASK FORCE

MAY 16, 2024



# Miwok Walk Audit

- Tuesday, April 30, 8 AM
- Participants from Safe Routes to Schools, Cool Petaluma, City (Public Works & Police), Miwok
- Focused on St. Francis Dr. and Baywood Dr.



# Campus Access Points

- 1) Main entrance on St. Francis Dr.
- 2) Former access via Miwok Park (now fenced)



# Drop-Off Observations

- High percentage of students dropped off in cars despite 50% living within ½ mile of school (Mi-WALK!)
- Inefficient/improper use of southern loading zone creates congestion around St. Francis Dr. and Beechwood Dr.
- Improper use of 12-minute parking zone (green curb) along St. Francis Dr.





### **Loading Improvements (School Responsibility):**

- Southern loading zone: paint curb white and add signage
- Send frequent reminders to parents & consider staffing the loading zone to keep drivers moving
- Consider creating separate loading area for students who require parental escort (be careful to avoid conflicts with buses if using northern loading zone)



## Loading Improvements (City Responsibility):

- Convert 12-minute parking area (green curb) to loading zone (white curb) during school drop-off and pick-up times



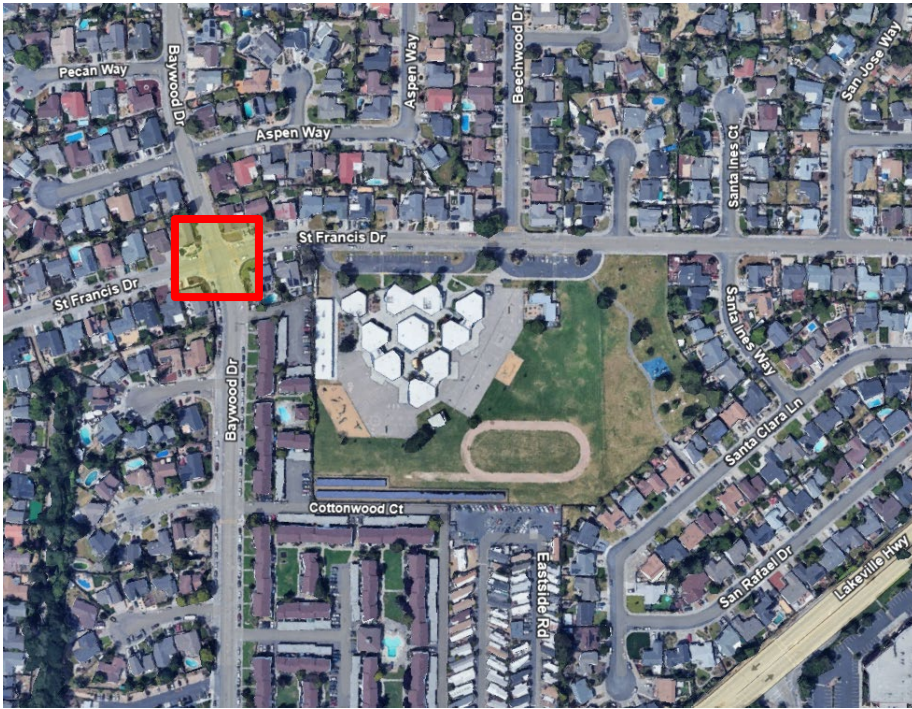
## St. Francis Dr. & Beechwood Dr.:

- Add bulbouts to improve visibility, shorten crossing distance, and slow traffic
- Add accessible curb ramps



Bulbout at Payran & Jefferson





## St. Francis Dr. & Baywood Dr.:

- Add bulbouts (near-term)
- Consider converting to roundabout (long-term)



## St. Francis Drive

- Envisioned as neighborhood greenway (low traffic, low speed street with priority for people walking & bicycling; alternative to S. McDowell Blvd.)

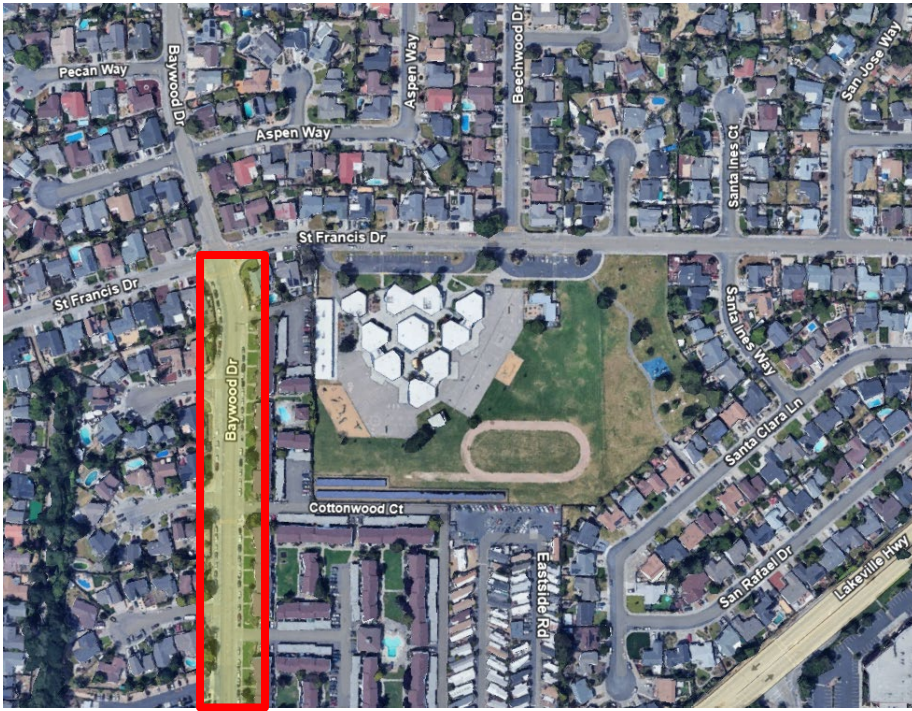
*“Neighborhood Greenways are slow, quiet streets, that prioritize people walking, bicycling, and rolling. They are the backbone of the Safe Routes to School network and connectors between neighborhoods, parks, schools, and business districts.”*

- Portland Bureau of Transportation



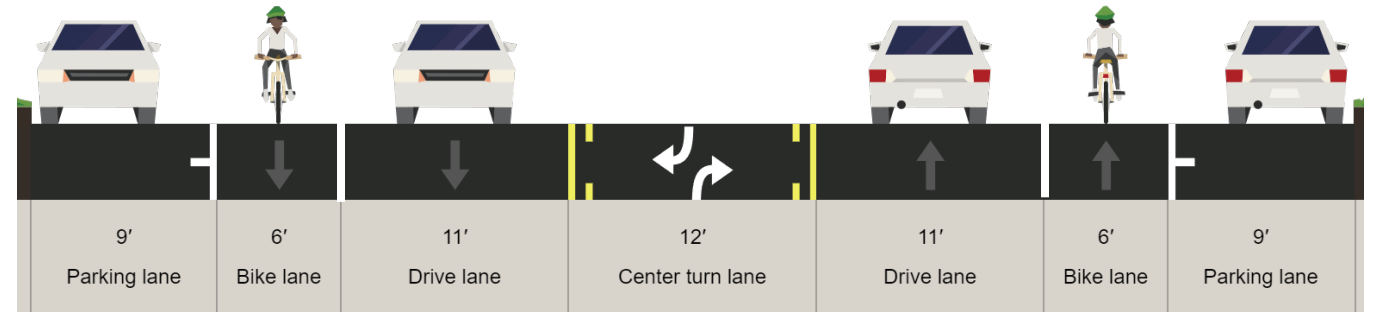


Garfield Drive

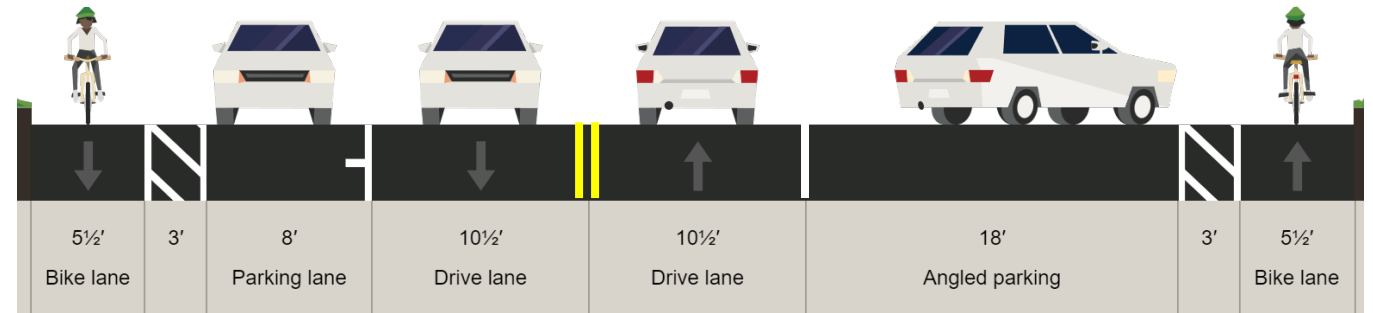


## Baywood Dr.

- Remove two-way left turn lane; add angled parking and protected bike lanes



Existing Configuration (facing east)

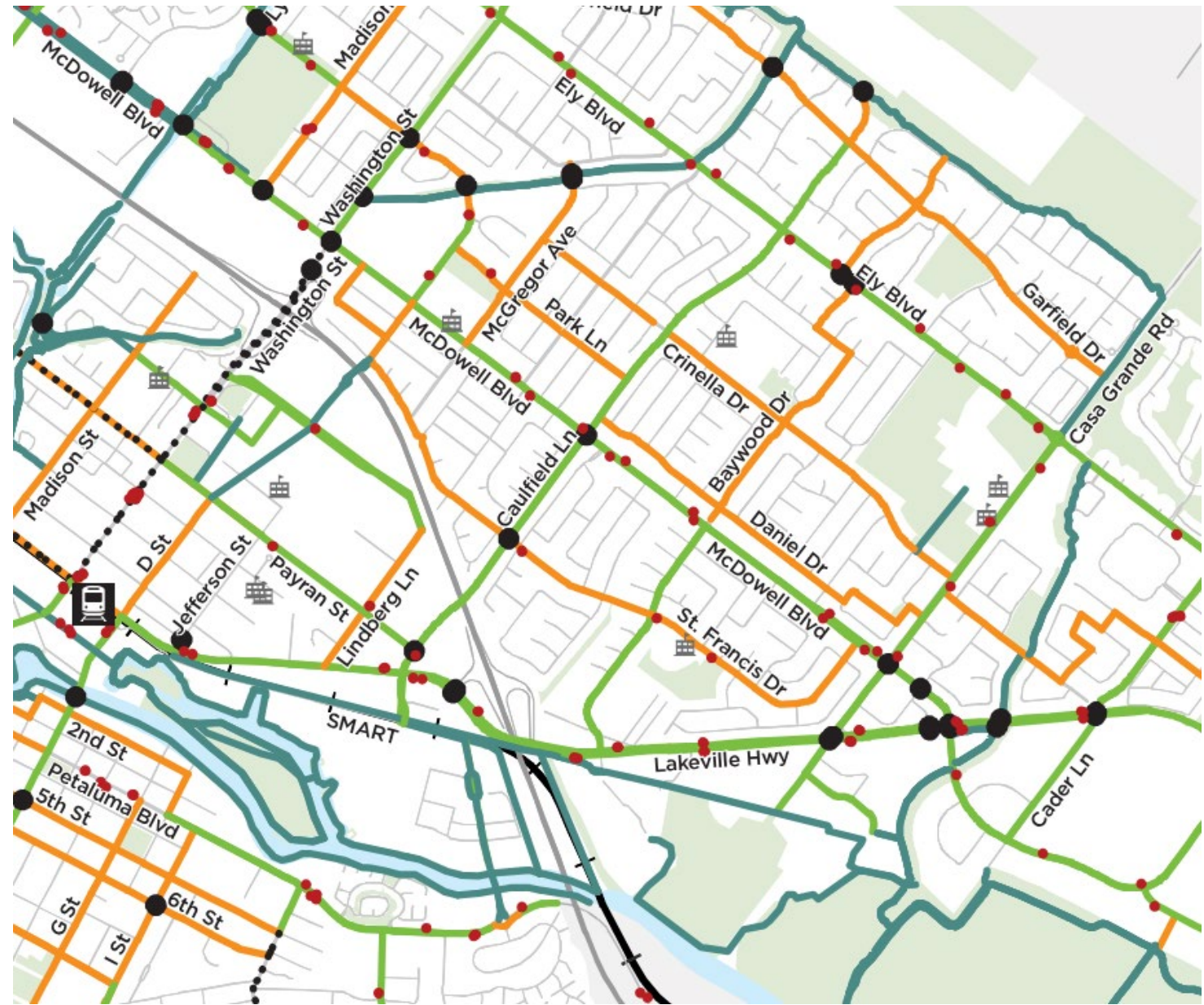


Potential Configuration (facing east)

# Envisioned Bicycle Network

- Trails - off-street paths for bicycles and/or pedestrians, paved or unpaved
- On-Street Bike Lanes - painted on pavement with or without buffers or barriers from vehicle traffic
- Neighborhood Greenways - signage, lane markings, and traffic calming measures on small, residential streets for bikes and vehicles to share the road
- ..... Facility type to be determined pending corridor study

- Intersection Improvements
- Bus Stops
- 🚏 Petaluma SMART Station
- 🚏 Petaluma North SMART Station (planned)
- 🌳 Parks
- 🏫 Schools



# Additional Feedback

---

- *Add notes here*

# Remaining Task Force Dates & Schools for 2023-24 School Year

---

- June 20: Casa Grande



# Contact Information & Resources

---

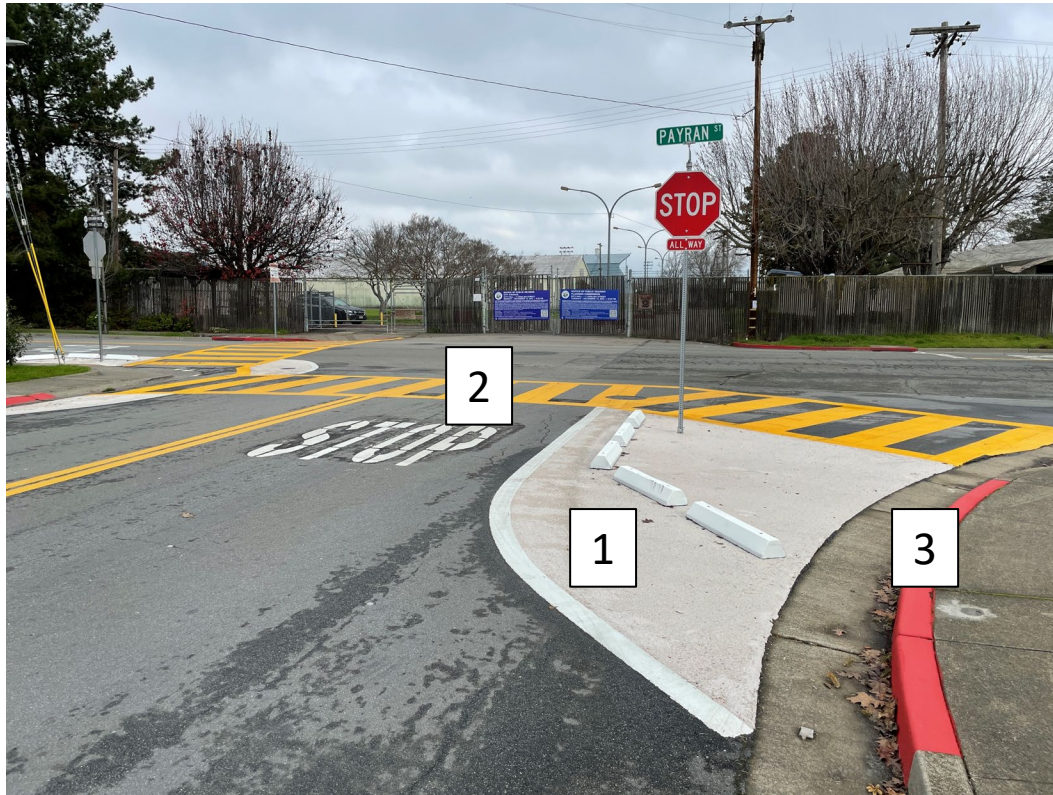
- Transportation Planning & Engineering: [safestreets@cityofpetaluma.org](mailto:safestreets@cityofpetaluma.org)
- Petaluma Transit: [transit@cityofpetaluma.org](mailto:transit@cityofpetaluma.org) / 707-778-4460 / [transit.cityofpetaluma.net](http://transit.cityofpetaluma.net)
- City Bike Map: [cityofpetaluma.org/bikemap](http://cityofpetaluma.org/bikemap)
- Report an Issue (Hazards & Quick Fixes): [cityofpetaluma.org/issues](http://cityofpetaluma.org/issues)
- Safe Streets Nomination Program (Traffic Calming & Safety Improvements): [cityofpetaluma.org/ssnp](http://cityofpetaluma.org/ssnp)
- Slow the Fast Down Campaign: [cityofpetaluma.org/slowthefastdown](http://cityofpetaluma.org/slowthefastdown)

# Walk Audit Recommendations

---

Please note that all recommendations are meant to capture **possible** solutions to issues or ideas raised during the walk audit. Each of these recommendations are subject to additional design, analysis, outreach, funding, prioritization, and approval by the City and/or Petaluma City Schools prior to implementation.

# Typical Intersection Enhancements



- 1) Painted curb extension (“bulbout”)
- 2) Ladder crosswalk; yellow for school zone
- 3) Parking prohibition (“daylighting”)

# Typical Intersection Enhancements



- 1) Concrete curb extension (“bulbout”)
- 2) Rapid-flashing beacon