

Meadow Elementary Walk Audit

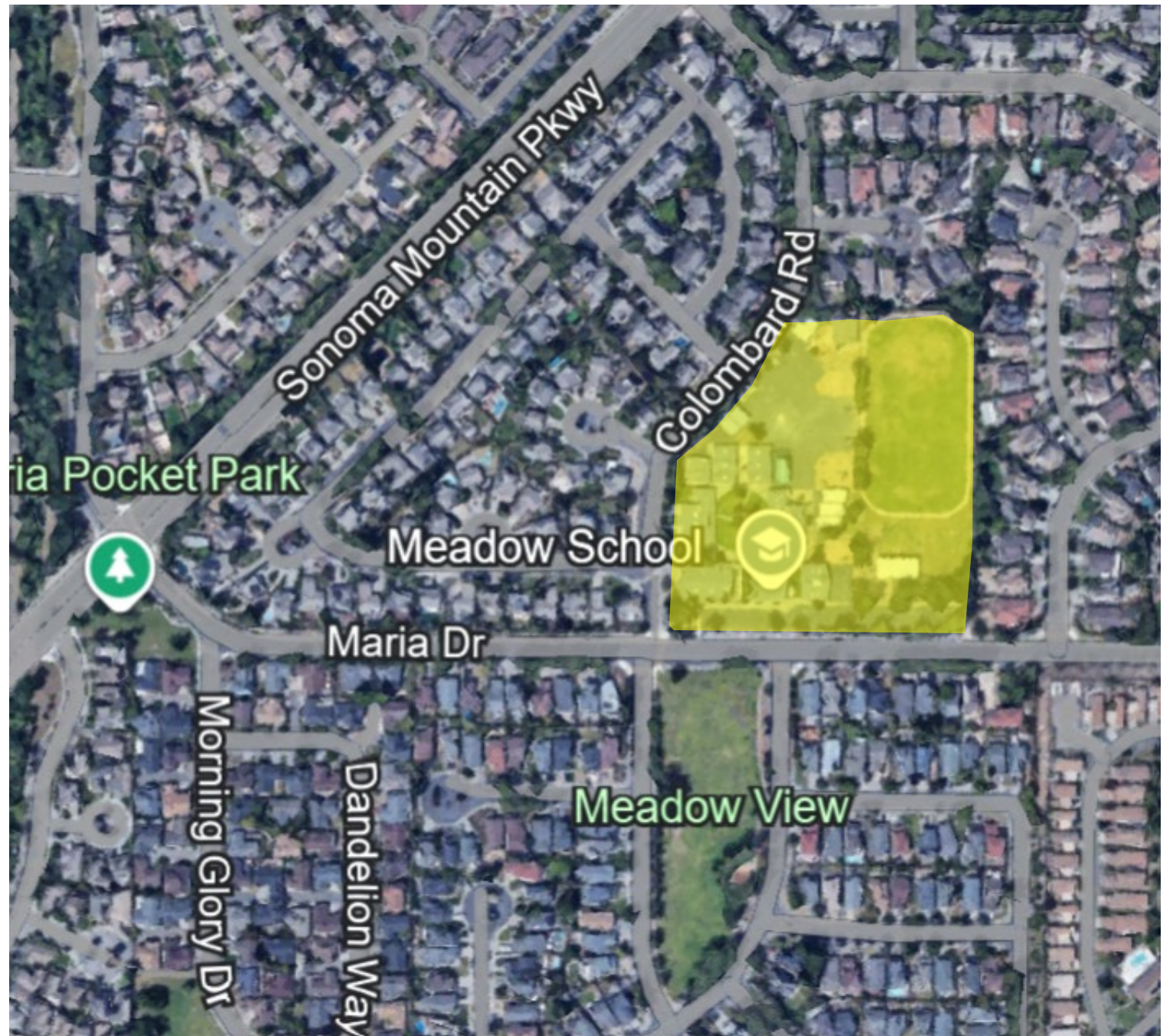
SAFE ROUTES TO SCHOOL TASK FORCE

NOVEMBER 21, 2024



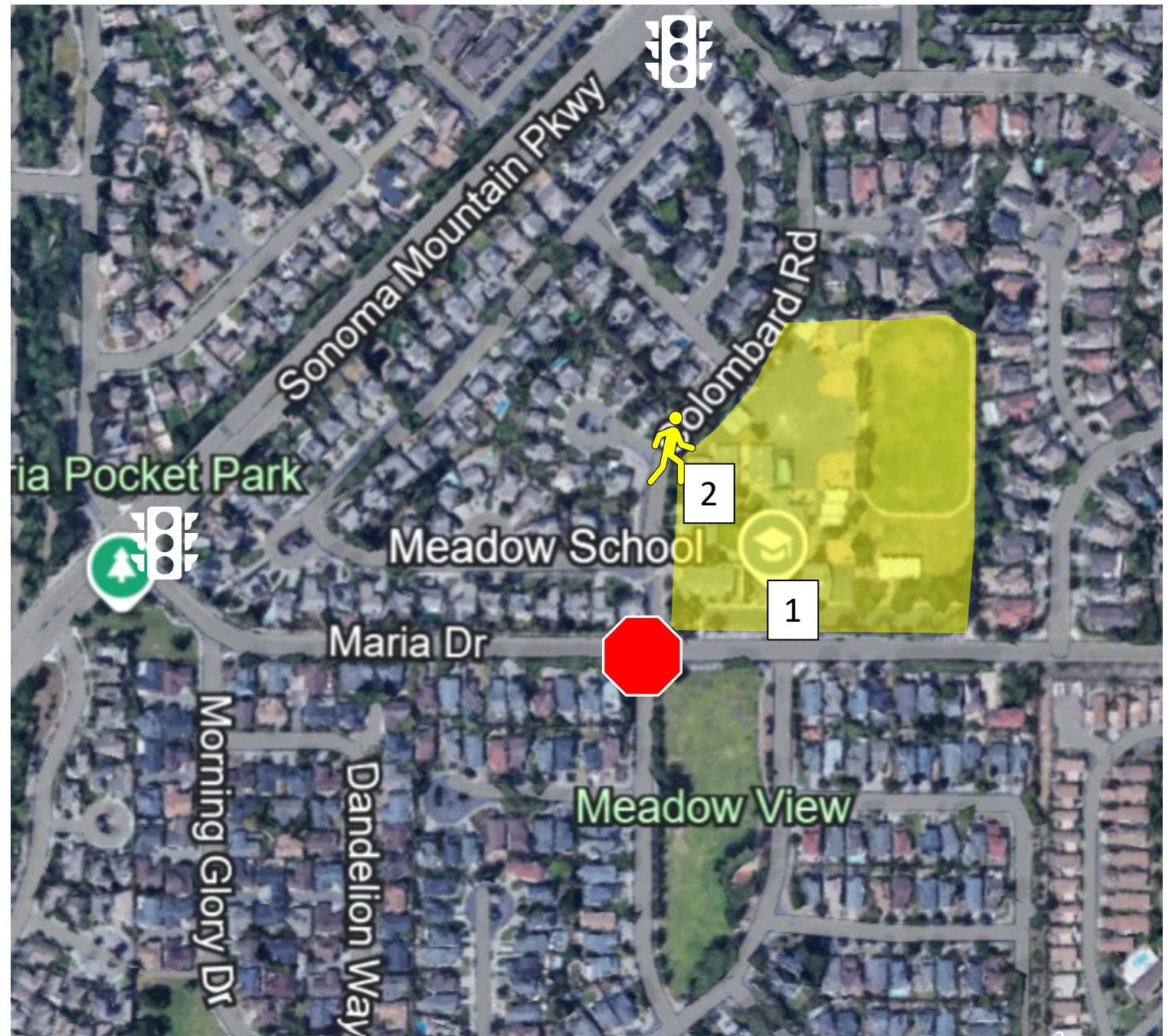
Meadow Walk Audit

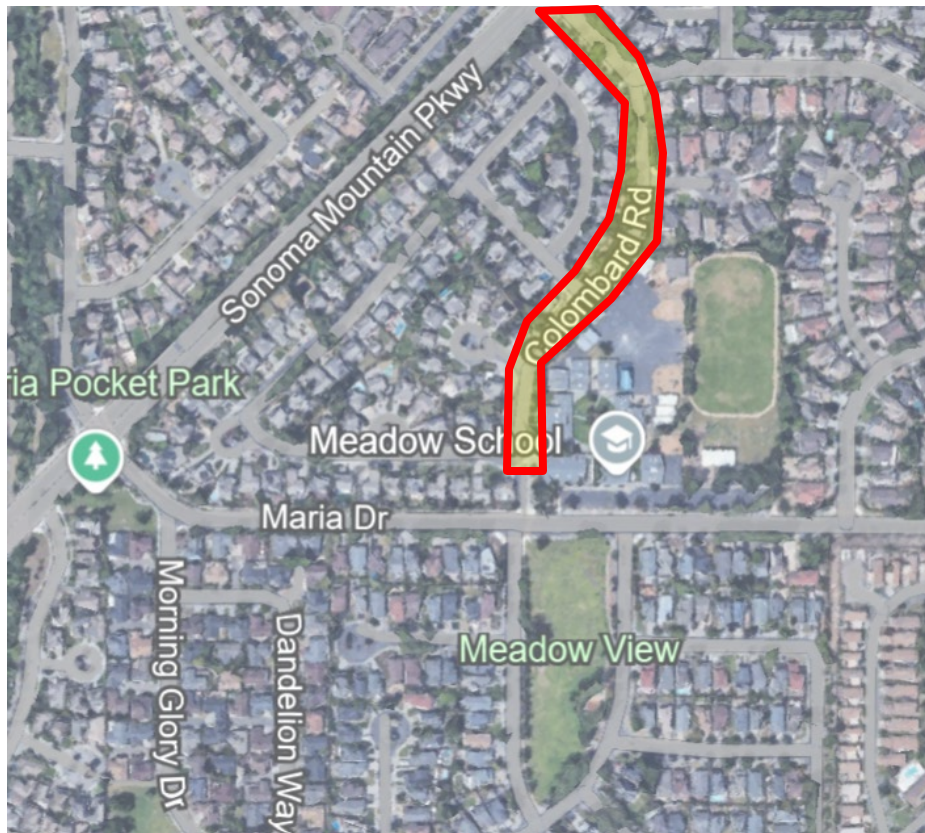
- Tuesday, 11/12, 1:30-3 PM
- Participants from Safe Routes to Schools, City (Public Works & Police), Meadow
- Focused on Maria Dr, Colombard Rd



Campus Access Points

- 1) Maria Drive
- 2) Colombard Road





Colombard Road – Issues & Observations:

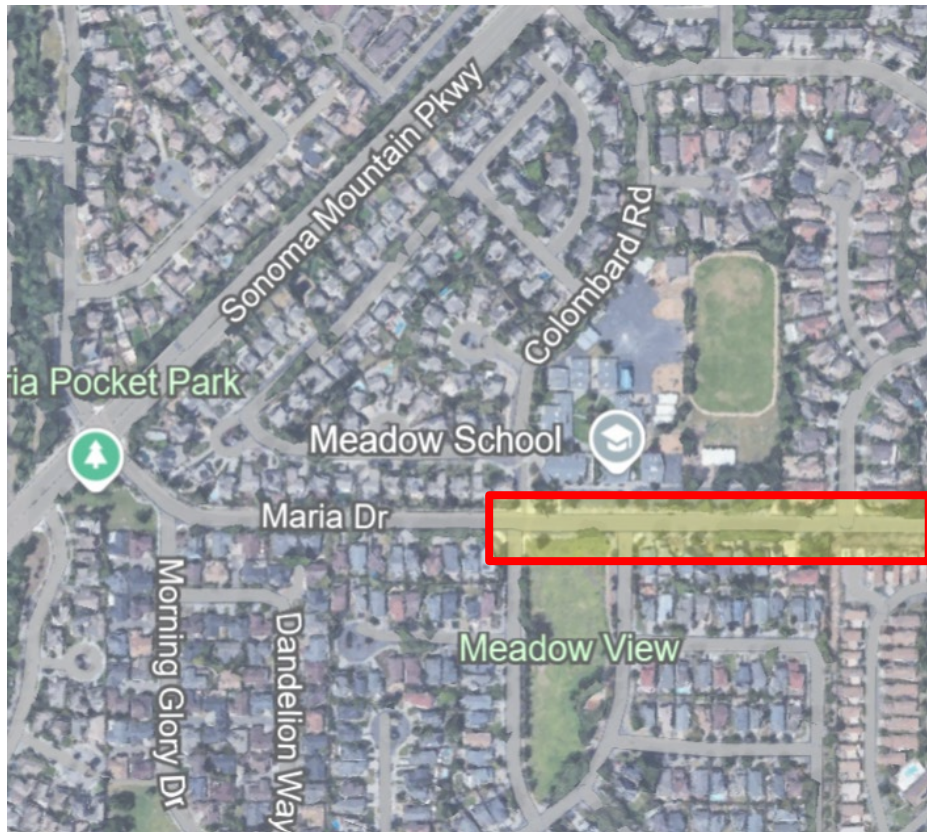
Complaints of speeding and crosswalk obstructions during drop-off/pick-up

Proposed improvements:

- Add curb extensions & double-sided signs to crosswalk
- Update school zone signage with reduced speed limit (15 MPH)



NEW PAINTED CURB EXTENSIONS AT F/11th



Maria Drive along school frontage – Issues & Observations:

Complaints of speeding and lack of crosswalk(s)

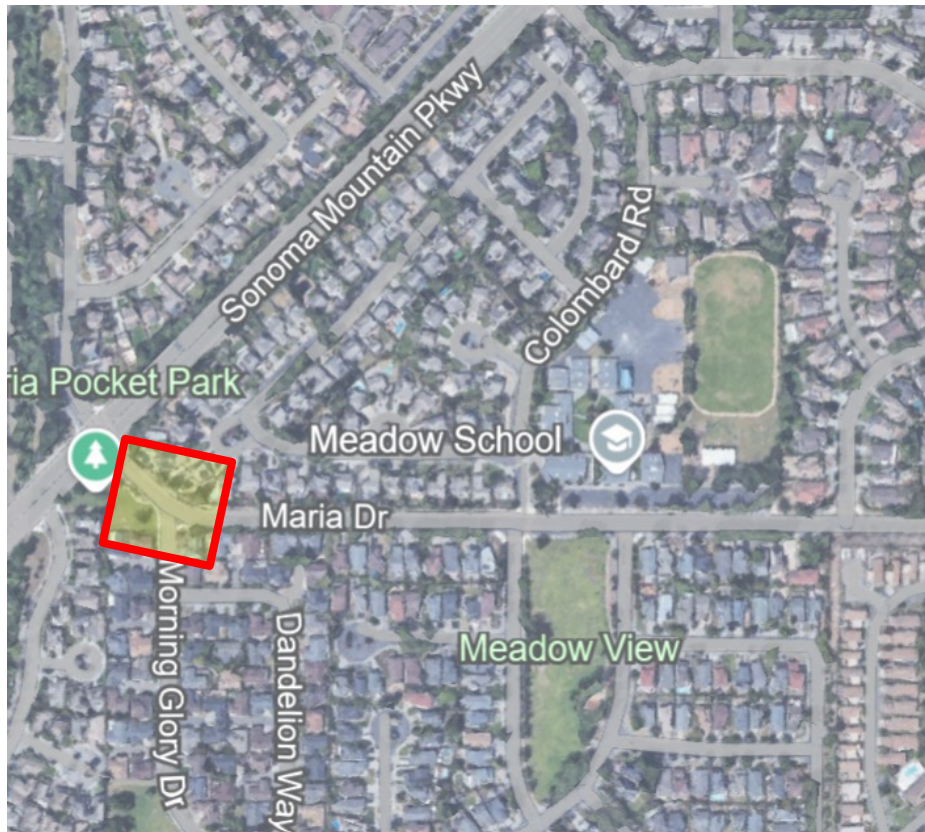
Proposed improvements:

- Install new crosswalk at Yarberry (on park side)
- Update school zone signage with reduced speed limit (15 MPH)



Maria Dr



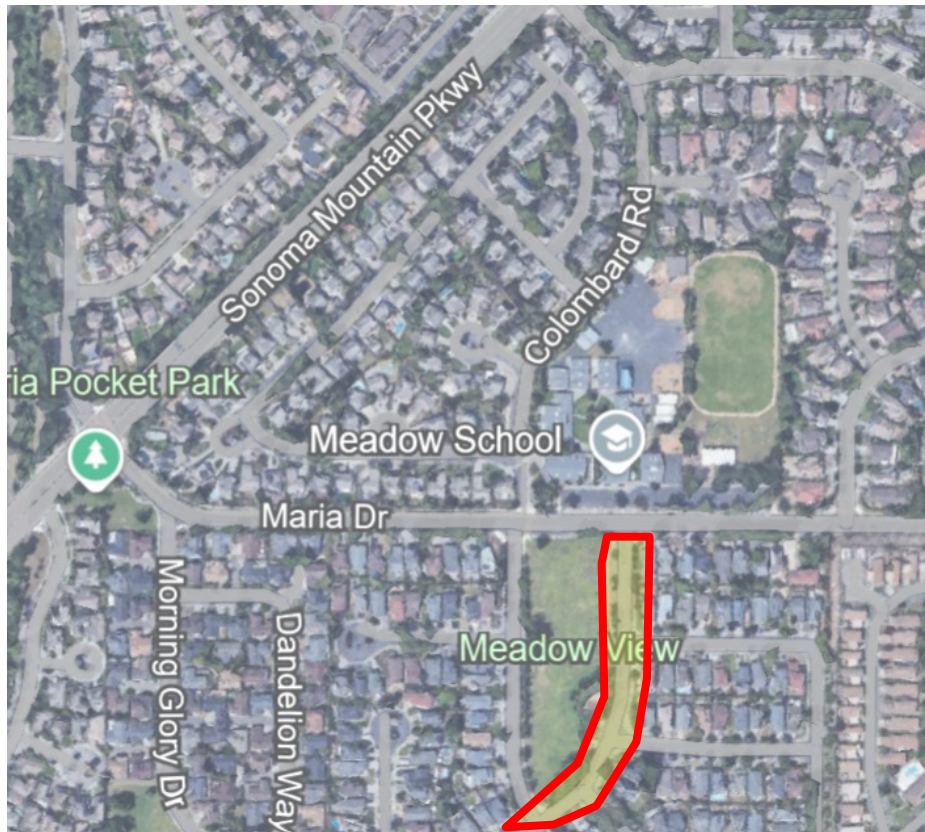


Maria Drive at Morning Glory Drive – Issues & Observations:

Complaints of speeding and conflicts with traffic turning on/off of Morning Glory Drive

Proposed improvements:

- Add dashed striping along curve through intersection
- Modify intersection to shorten pedestrian crossing distance and slow turning movements



Yarberry Drive – Issues & Observations:

Complaints of speeding and lack of crosswalks to Meadow View Park

Potential improvements:

- Sufficient width for edgelines/bike lanes to narrow road
- Explore feasible locations for crosswalks



EDGELINES ON GARFIELD DRIVE

Additional Feedback

- *Add notes here*

Upcoming Walk Audits

- **Thursday, December 12, 2:15 PM:** Kenilworth & Corona Creek (meet at Kenilworth)
- **Tuesday, January 14, 2:30 PM:** Sonoma Mountain

Contact Information & Resources

- Transportation Planning & Engineering: safestreeets@cityofpetaluma.org
- Petaluma Transit: transit@cityofpetaluma.org / 707-778-4460 / transit.cityofpetaluma.net
- City Bike Map: cityofpetaluma.org/bikemap
- Report an Issue (Hazards & Quick Fixes): cityofpetaluma.org/issues
- Safe Streets Nomination Program (Traffic Calming & Safety Improvements): cityofpetaluma.org/ssnp
- Slow the Fast Down Campaign: cityofpetaluma.org/slowthefastdown

Walk Audit Recommendations

Please note that all recommendations are meant to capture **possible** solutions to issues or ideas raised during the walk audit. Each of these recommendations are subject to additional design, analysis, outreach, funding, prioritization, and approval by the City and/or Petaluma City Schools prior to implementation.