



CESAR CHAVEZ LANGUAGE ACADEMY

Santa Rosa City Schools

Sonoma County Safe Routes to School Program 2022-23 School Snapshot



SRTS School Since: Fall 2017

Principal: Aida Diaz

Champions: Marlene Jimenez-Lieu, Amy Scribner

Student Travel Modes	Active Green Trips	Green Trips
Fall 2022	10%	19%
Parent Surveys	# of School Responses	# of District Responses
Spring 2023	40	271

% of Student Population Using Active Green Transportation on Int'l W/R to School Day: 7%



Pre-Bike to School Day: 9 bikes

On-Bike to School Day: 10 bikes

*Active Green Trips = walk, bike, scoot, skate; Green Trips = Active plus carpool, bus

Encouragement Activities

Int'l Walk and Roll to School Day

Ruby Bridges Walk to School Day

Bike To School Day

Monthly Walk/Roll Days (1/4)

Golden Sneaker Award

Monthly Challenges rec'd (6/8)

Walking School Bus

Bike Train

Youth Engagement (student involvement with activities)

Education Activities

2nd Gr Ped Safety Lessons

4th Gr Bike Basics Lessons

4th Gr Bike Rodeo

5th Gr Communications/Mapping Lessons

Whole-School Assembly

Community Engagement

Bikemobile Visit

Champion Meetings (3/3)

Family Bike Workshop/Ride

Outreach at School Event

Parent Presentation (PTA/PFO/ELAC)

Staff Presentation

Helmets-9
Bikes Repaired-16
Learn to Ride-8

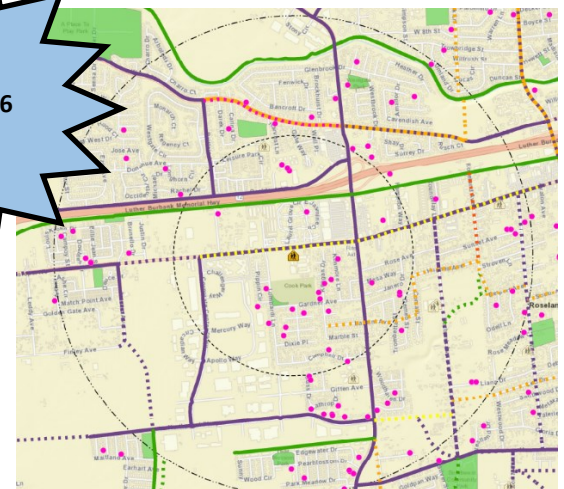
GIS Student Address Map

3% live within a 1/4 mile

7% live within a 1/2 mile

22% live within 1 mile

55% live within 2 miles



Note: Grayed out activities did not take place at site during 22-23 school year





SHEPPARD ELEMENTARY

Roseland Public Schools



Sonoma County Safe Routes to School Program 2022-23 School Snapshot

SRTS School Since: 2009

Principal: Erinn Mackey

Champions: Efrain Renteria Lugo

Student Travel Modes	Active Green Trips	Green Trips
Fall 2022	NA	NA
Parent Surveys	# of School Responses	# of District Responses
Spring 2023	33	95

% of Student Population Using Active Green Transportation on Int'l W/R to School Day: 19%



Pre-Bike to School Day: 5 bikes

On-Bike to School Day: 0 bikes

*Active Green Trips = walk, bike, scoot, skate; Green Trips = Active plus carpool, bus

Encouragement Activities

Int'l Walk and Roll to School Day

Ruby Bridges Walk to School Day

Bike To School Day

Monthly Walk/Roll Days (4/4)

Golden Sneaker Award

Monthly Challenges rec'd (0/8)

Walking School Bus

Bike Train

Youth Engagement (student involvement with activities)

Education Activities

2nd Gr Ped Safety Lessons

4th Gr Bike Basics Lessons

4th Gr Bike Rodeo

5th Gr Communications/Mapping Lessons

Whole-School Assembly

Community Engagement

Bikemobile Visit

Champion Meetings (3/3)

Family Bike Workshop/Ride

Outreach at School Event

Parent Presentation (Parent Club)

Staff Presentation



Helmets-28

Bikes Repaired-29

Learn to Ride-11

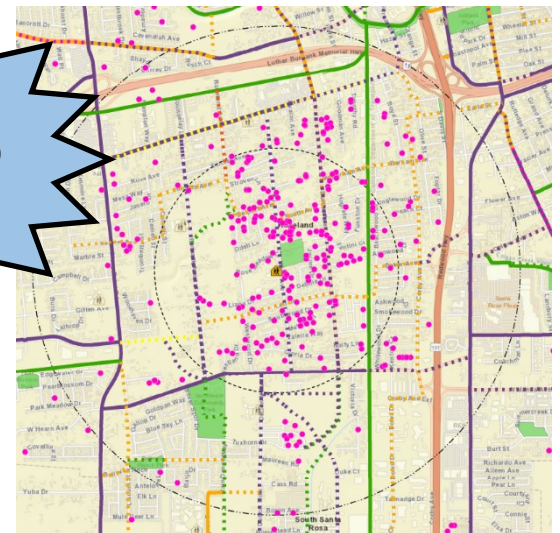
GIS Student Address Map

24% live within a 1/4 mile

48% live within a 1/2 mile

71% live within 1 mile

87% live within 2 miles



Note: Grayed out activities did not take place at site during 22-23 school year





KAWANA SPRINGS ELEMENTARY

Bellevue Union School District

Sonoma County Safe Routes to School Program 2022-23 School Snapshot



SRTS School Since: Fall 2022

Principal: Denise Maram-McCullough

Champions: Erika Corrales

Student Travel Modes	Active Green Trips	Green Trips
Fall 2022	NA	NA
Parent Surveys	# of School Responses	# of District Responses
Spring 2023	3	5

% of Student Population Using Active Green Transportation on Int'l W/R to School Day: 12%



Pre-Bike to School Day: NA

On-Bike to School Day: NA

*Active Green Trips = walk, bike, scoot, skate; Green Trips = Active plus carpool, bus

Encouragement Activities

Int'l Walk and Roll to School Day

Ruby Bridges Walk to School Day

Bike To School Day

Monthly Walk/Roll Days (0/4)

Golden Sneaker Award

Monthly Challenges rec'd (0/8)

Walking School Bus

Bike Train

Youth Engagement (student involvement with activities)

Education Activities

2nd Gr Ped Safety Lessons

4th Gr Bike Basics Lessons

4th Gr Bike Rodeo

5th Gr Communications/Mapping Lessons

Whole-School Assembly

Community Engagement

Bikemobile Visit

Champion Meetings (1/3)

Family Bike Workshop

Outreach at School Event

Parent Presentation (PTA/PFO/ELAC)

Staff Presentation



Note: Grayed out activities did not take place at site during 22-23 school year





JX WILSON ELEMENTARY

Wright Elementary School District

Sonoma County Safe Routes to School Program 2022-23 School Snapshot



SRTS School Since: Fall 2011

Principal: Corina Rice

Champions: Nhung Luong, Janeen Lima, Corina Rice

Student Travel Modes	Active Green Trips	Green Trips
Fall 2022	22%	26%
Parent Surveys	# of School Responses	# of District Responses
Spring 2023	28	76

% of Student Population Using Active Green Transportation on Int'l W/R to School Day: 53%



Pre-Bike to School Day: 4 bikes

On-Bike to School Day: 6 bikes

*Active Green Trips = walk, bike, scoot, skate; Green Trips = Active plus carpool, bus

Encouragement Activities

- Int'l Walk and Roll to School Day
- Ruby Bridges Walk to School Day
- Bike To School Day
- Monthly Walk/Roll Days (5/4)
- Golden Sneaker Award
- Monthly Challenges rec'd (3/8)
- Walking School Bus
- Bike Train
- Youth Engagement (student involvement with activities)

Education Activities

- 2nd Gr Ped Safety Lessons
- 4th Gr Bike Basics Lessons
- 4th Gr Bike Rodeo
- 5th Gr Communications/Mapping Lessons
- Whole School Assembly

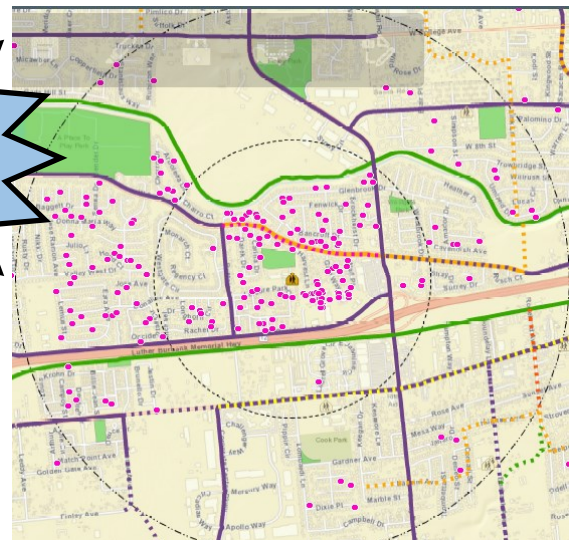
Community Engagement

- Bikemobile Visit
- Champion Meetings (3/3)
- Family Bike Ride
- Outreach at School Event
- Parent Presentation (DELAC/ELAC)
- Staff Presentation

Helmets-33
Bikes Repaired-26
Learn to Ride-7

GIS Student Address Map

- 28% live within a 1/4 mile
- 42% live within a 1/2 mile
- 71% live within 1 mile
- 92% live within 2 miles



Note: Grayed out activities did not take place at site during 22-23 school year





ROBERT L STEVENS ELEMENTARY

Wright Elementary School District

Sonoma County Safe Routes to School Program 2022-23 School Snapshot



SRTS School Since: Fall 2012

Principal: Lori Pola Hoard

Champions: Lauren Von Arx, Lori Pola Hoard

Student Travel Modes	Active Green Trips	Green Trips
Fall 2022	14%	19%
Parent Surveys	# of School Responses	# of District Responses
Spring 2023	17	76

% of Student Population Using Active Green Transportation on Int'l W/R to School Day: 18%



Pre-Bike to School Day: 5 bikes

On-Bike to School Day: 10 bikes

*Active Green Trips = walk, bike, scoot, skate; Green Trips = Active plus carpool, bus

Encouragement Activities

- Int'l Walk and Roll to School Day
- Ruby Bridges Walk to School Day
- Bike To School Day
- Monthly Walk/Roll Days (4/4)
- Golden Sneaker Award
- Monthly Challenges rec'd (/8)
- Walking School Bus
- Bike Train
- Youth Engagement (student involvement with activities)

Education Activities

- 2nd Gr Ped Safety Lessons
- 4th Gr Bike Basics Lessons
- 4th Gr Bike Rodeo
- 5th Gr Communications/Mapping Lessons
- Whole School Assembly

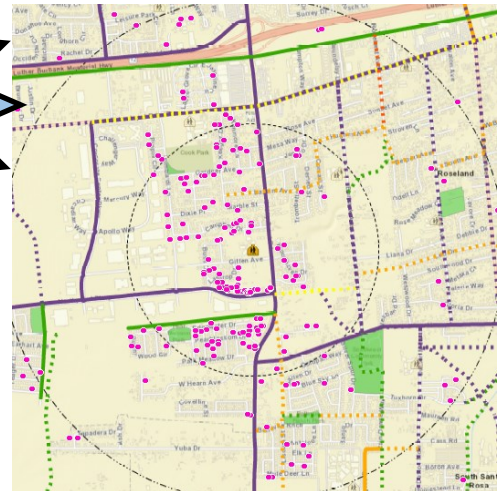
Community Engagement

- Bikemobile Visit
- Champion Meetings (3/3)
- Adult LTR Class-5
- Family Bike Rides-2
- Outreach at School Event
- Parent Presentation (DELAC/ELAC)
- Staff Presentation

Helmets-26
Bikes Repaired-44
Learn to Ride-3

GIS Student Address Map

- 21% live within a 1/4 mile
- 46% live within a 1/2 mile
- 62% live within 1 mile
- 85% live within 2 miles



Note: Grayed out activities did not take place at site during 22-23 school year





WRIGHT CHARTER SCHOOL

Wright Elementary School District

Sonoma County Safe Routes to School Program 2022-23 School Snapshot



SRTS School Since: 2015

Principal: Stefan Schaeffer

Champions: Maas Anderson, Brian Belding, Ellen Desmond, Ashourina Mirzayof, Stefan Schaeffer

Student Travel Modes	Active Green Trips	Green Trips
Fall 2022	6%	30%
Parent Surveys	# of School Responses	# of District Responses
Spring 2023	31	76

% of Student Population Using Active Green Transportation on Int'l W/R to School Day: 24%

Pre-Bike to School Day: NA
On-Bike to School Day: NA

*Active Green Trips = walk, bike, scoot, skate; Green Trips = Active plus carpool, bus

Encouragement Activities

- Int'l Walk and Roll to School Day
- Ruby Bridges Walk to School Day
- Bike To School Day
- Monthly Walk/Roll Days (4/4)
- Golden Sneaker Award
- Monthly Challenges rec'd (2/8)
- Walking School Bus
- Bike Train
- Youth Engagement (student involvement with activities)

Education Activities

- 2nd Gr Ped Safety Lessons
- 4th Gr Bike Basics Lessons
- 4th Gr Bike Rodeo
- 5th Gr Communications/Mapping Lessons
- Whole School Assembly
- Middle School On-Bike Skills

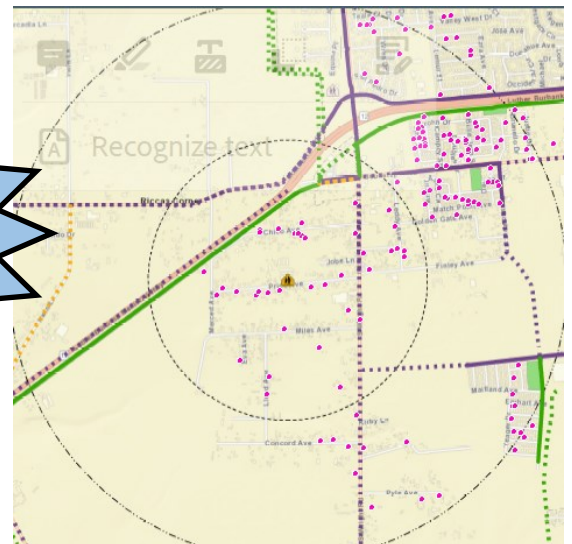
Community Engagement

- Bikemobile Visit
- Champion Meetings (3/3)
- Family Bike Ride
- Outreach at School Event
- Parent Presentation (DELAC)
- Staff Presentation

GIS Student Address Map

- 9% live within a 1/4 mile
- 16% live within a 1/2 mile
- 49% live within 1 mile
- 73% live within 2 miles

Helmets-20
Bikes Repaired-26
Learn to Ride-15



Note: Grayed out activities did not take place at site during 22-23 school year

