

# PJHS, Valley Vista, Spring Hill, & McNear Recap & Discussion

---

SAFE ROUTES TO SCHOOL TASK FORCE

SEPTEMBER 19, 2024



# N. Webster Audit

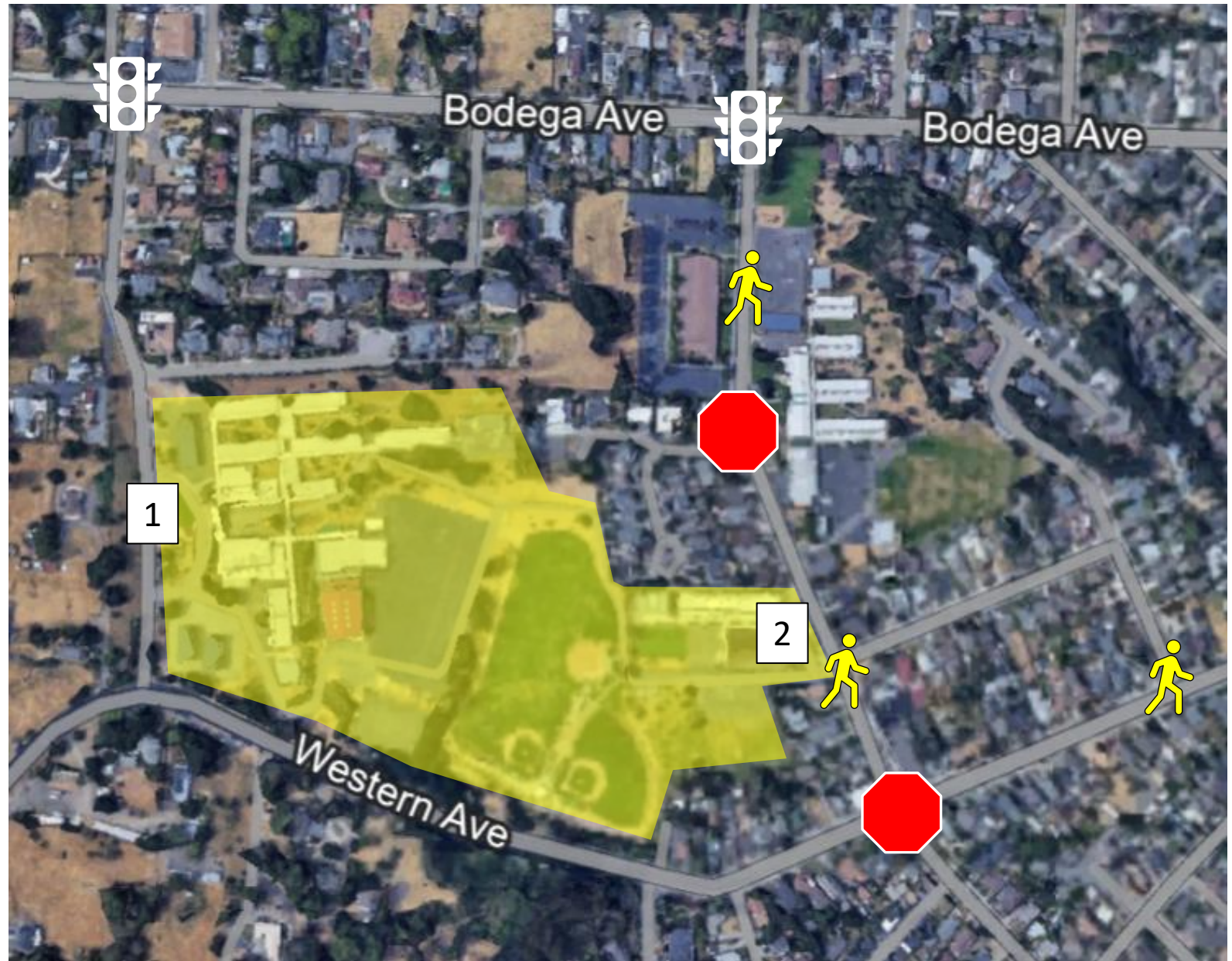
- Thursday, 8/29, 8 AM
- Participants from Safe Routes to Schools, City (Public Works & Police), Valley Vista, PJHS, Spring Hill
- Focused on N. Webster Street, Western Avenue, Bodega Avenue



# Campus Access Points: PJHS & Spring Hill

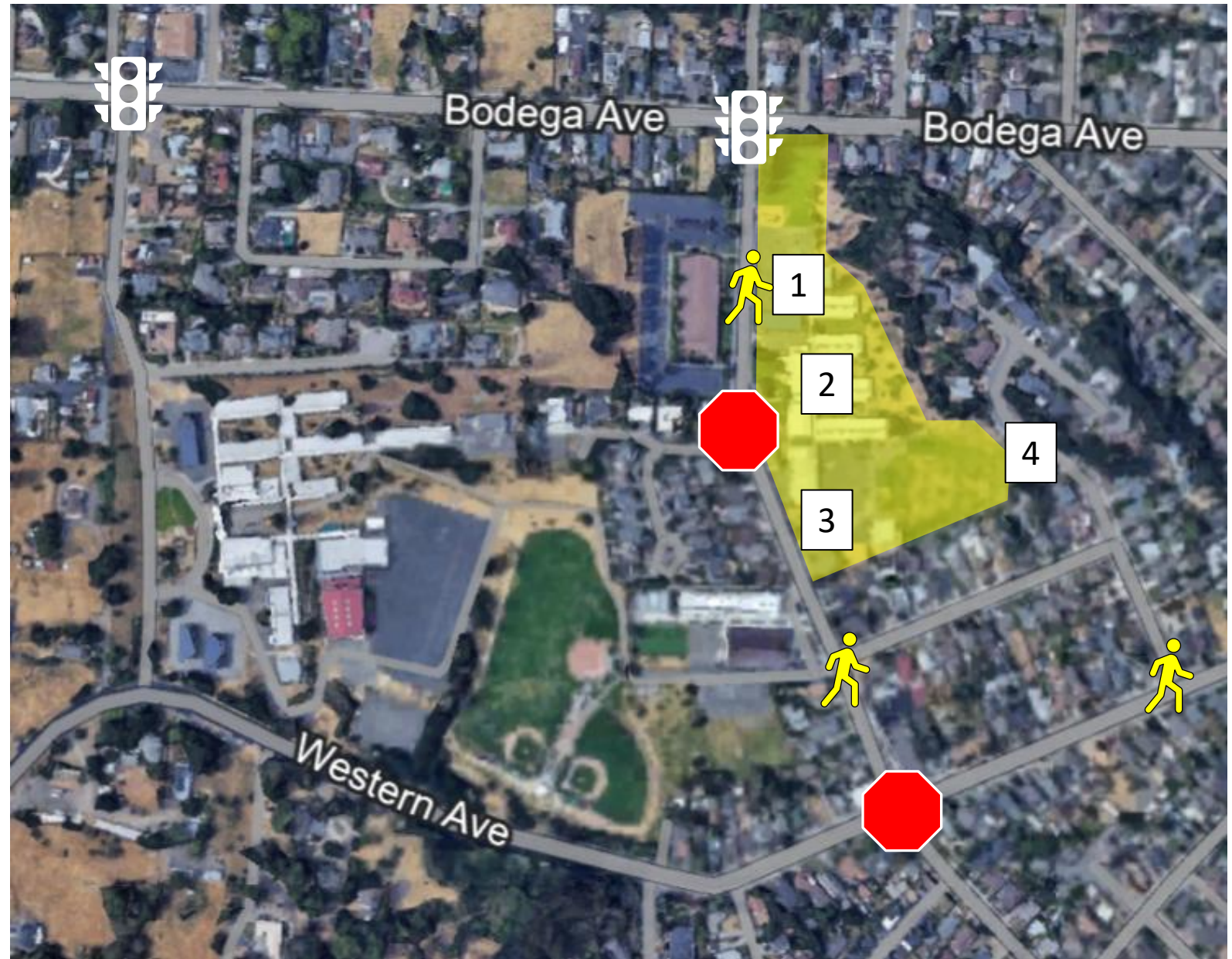
- 1) Bantam Way
- 2) N. Webster Street\*

\* + Spring Hill



# Campus Access Points: Valley Vista

- 1) N. Webster Street (lower grade)
- 2) N. Webster Street (main entrance)
- 3) N. Webster Street (upper grade)
- 4) N. Fair Street





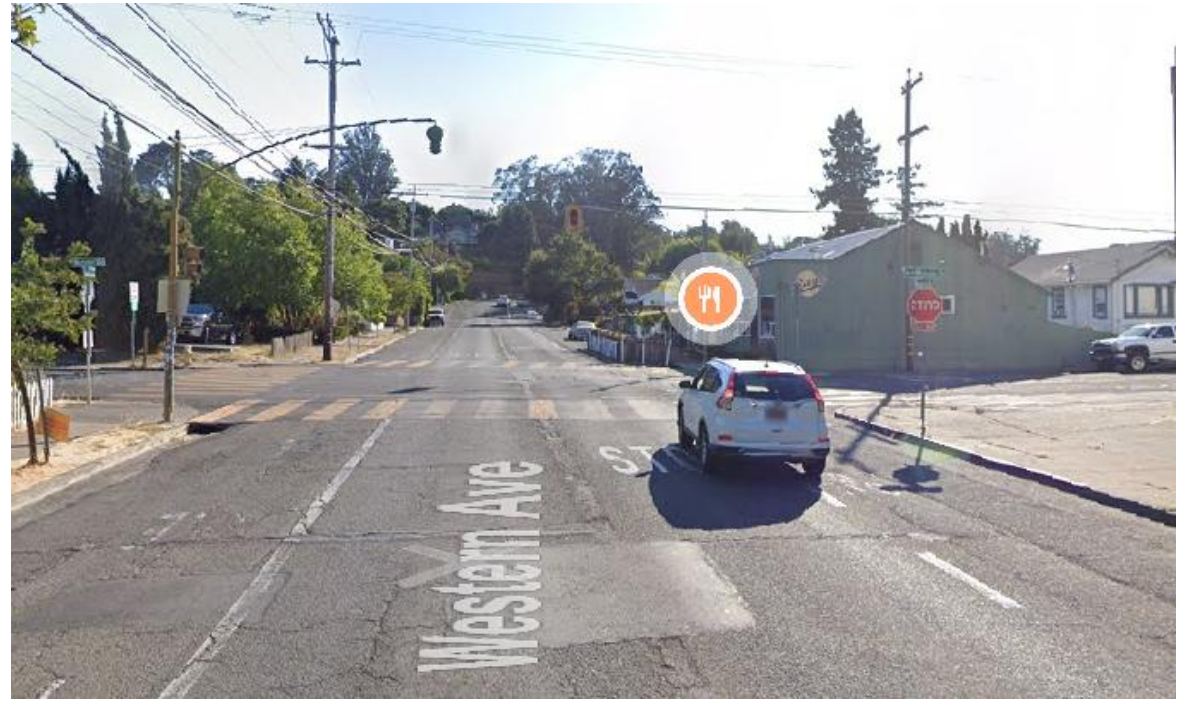
## **Bodega Avenue – Issues & Observations**

- Traffic calming, bike, and crossing improvements needed



## **N. Webster Street – Issues & Observations**

- Traffic calming, bike, and crossing improvements needed
- Issues with stop compliance at Townview Lane
- Review loading zone options, especially with possible increased enrollment at Valley Vista
- Repaving tentatively scheduled for 2027



## Western Avenue – Issues & Observations

- Bulbouts and accessible ramps needed at Western Avenue / N. Webster Street intersection
- Review loading zone options, especially with possible increased enrollment at Valley Vista
- Repaving tentatively scheduled for 2029



# McNear Audit

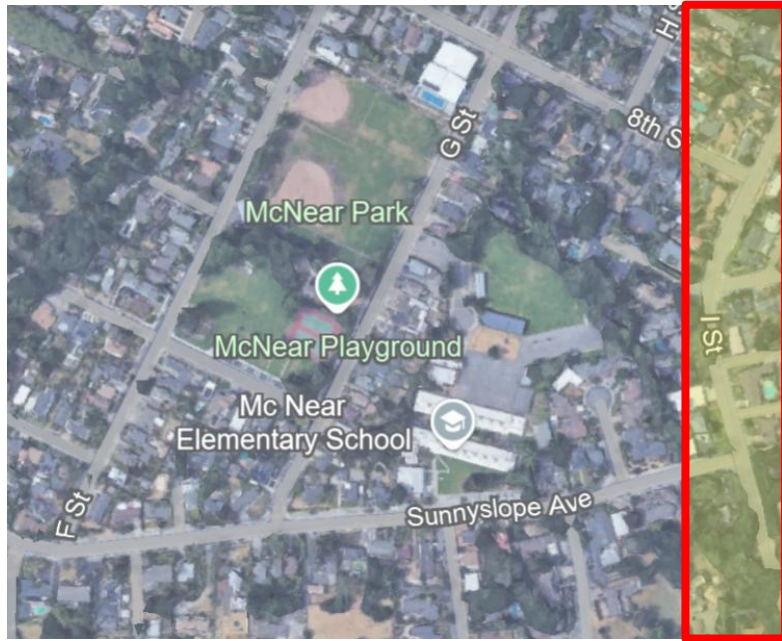
- Friday, 9/13, 8 AM
- Participants from Safe Routes to Schools, City (Public Works & Police), McNear
- Focused on I Street, Sunnyslope Avenue, G Street



# Campus Access Points

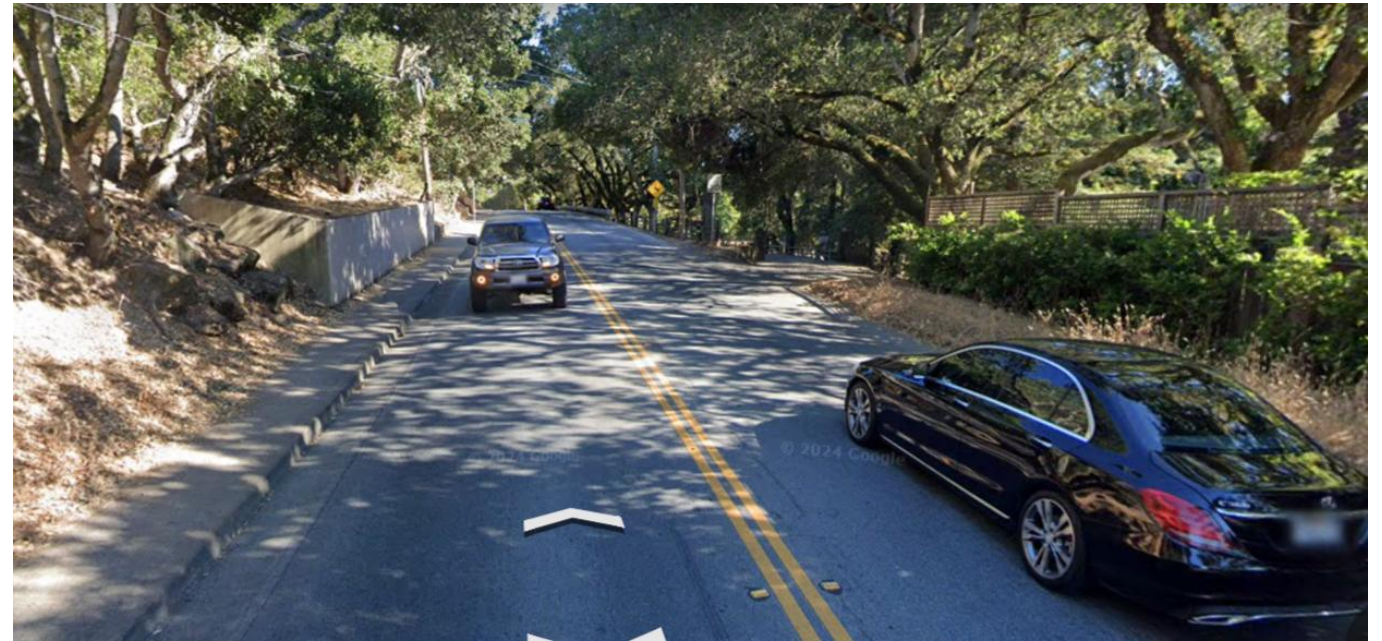
- 1) Sunnyslope Ave
- 2) G St





## I Street – Issues & Observations

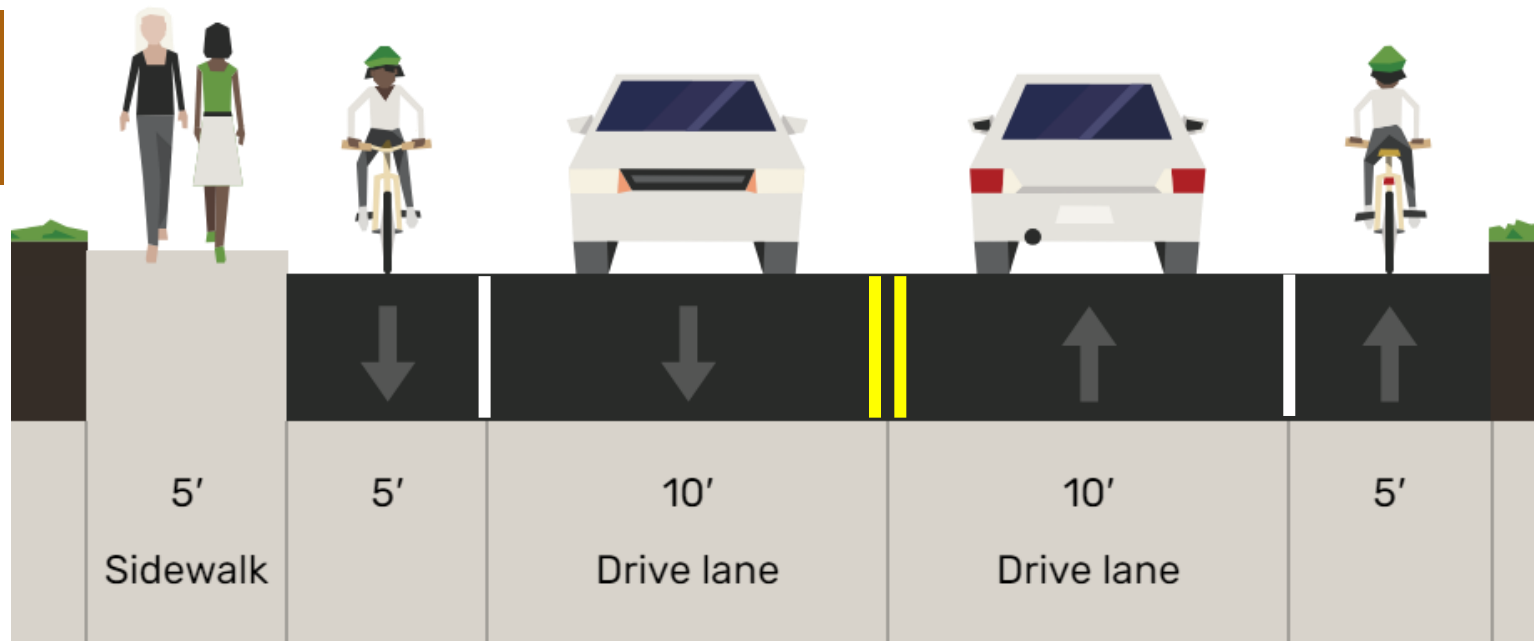
- Traffic calming and improved crossings needed
- Explore changes to I Street / Grant Avenue intersection (all-way stop?)
- Sidewalk gaps between 8<sup>th</sup> Street – Sunnyslope Avenue (west side) & Sunnyslope Avenue – Independence Way (east side)



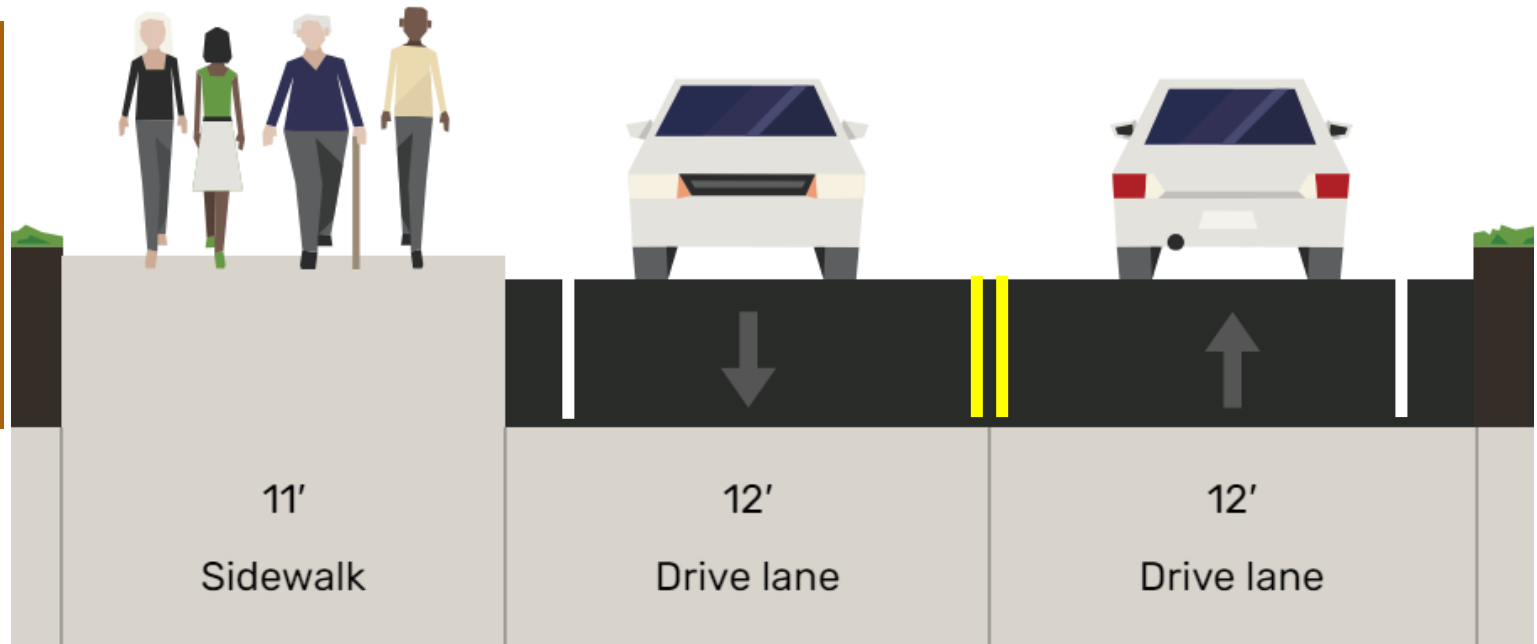
## I Street – Issues & Observations (Continued)

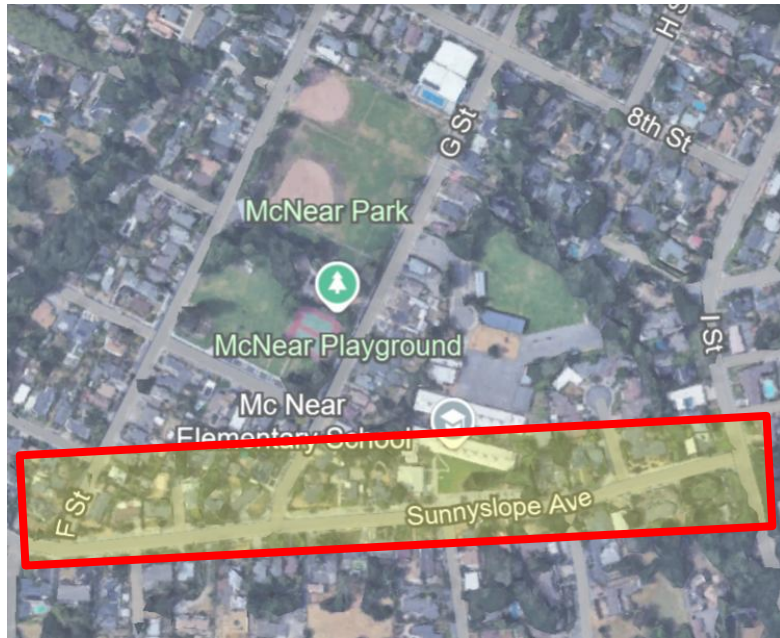
- Consider adding crosswalk to all sides of I Street / Sunnyslope Avenue intersection
- Challenges for people walking & bicycling between Sunnyslope Ave & Rd due to narrow right-of-way

## NEAR-TERM OPTION: ON-STREET BIKE LANES



## LONG-TERM OPTION: WIDEN SIDEWALK TO ACCOMMODATE PEOPLE WALKING & BIKING IN BOTH DIRECTIONS?





## Sunnyslope Avenue – Issues & Observations

- Bike lanes need to be striped; centerline needs to be refreshed
- Additional crosswalk requested near Dear Valley Court (east side of drop off area)
- Remove loading zone west of school frontage due to bike lane conflict and move loading activities to back of school (G Street) or perpendicular parking area if possible



## G Street – Issues & Observations

- Enhance crosswalk with bulbouts; consider replacing flashing beacon with newer system
- Collect speed data and consider traffic calming measures if necessary



Bulbout at Payran & Jefferson

# Contact Information & Resources

---

- Transportation Planning & Engineering: [safestreets@cityofpetaluma.org](mailto:safestreets@cityofpetaluma.org)
- Petaluma Transit: [transit@cityofpetaluma.org](mailto:transit@cityofpetaluma.org) / 707-778-4460 / [transit.cityofpetaluma.net](http://transit.cityofpetaluma.net)
- City Bike Map: [cityofpetaluma.org/bikemap](http://cityofpetaluma.org/bikemap)
- Report an Issue (Hazards & Quick Fixes): [cityofpetaluma.org/issues](http://cityofpetaluma.org/issues)
- Safe Streets Nomination Program (Traffic Calming & Safety Improvements): [cityofpetaluma.org/ssnp](http://cityofpetaluma.org/ssnp)
- Slow the Fast Down Campaign: [cityofpetaluma.org/slowthefastdown](http://cityofpetaluma.org/slowthefastdown)

# Walk Audit Recommendations

---

Please note that all recommendations are meant to capture **possible** solutions to issues or ideas raised during the walk audit. Each of these recommendations are subject to additional design, analysis, outreach, funding, prioritization, and approval by the City and/or Petaluma City Schools prior to implementation.

# Envisioned Bicycle Network

- Trails - off-street paths for bicycles and/or pedestrians, paved or unpaved
- On-Street Bike Lanes - painted on pavement with or without buffers or barriers from vehicle traffic
- Neighborhood Greenways - signage, lane markings, and traffic calming measures on small, residential streets for bikes and vehicles to share the road
- ..... Facility type to be determined pending corridor study

● Intersection Improvements

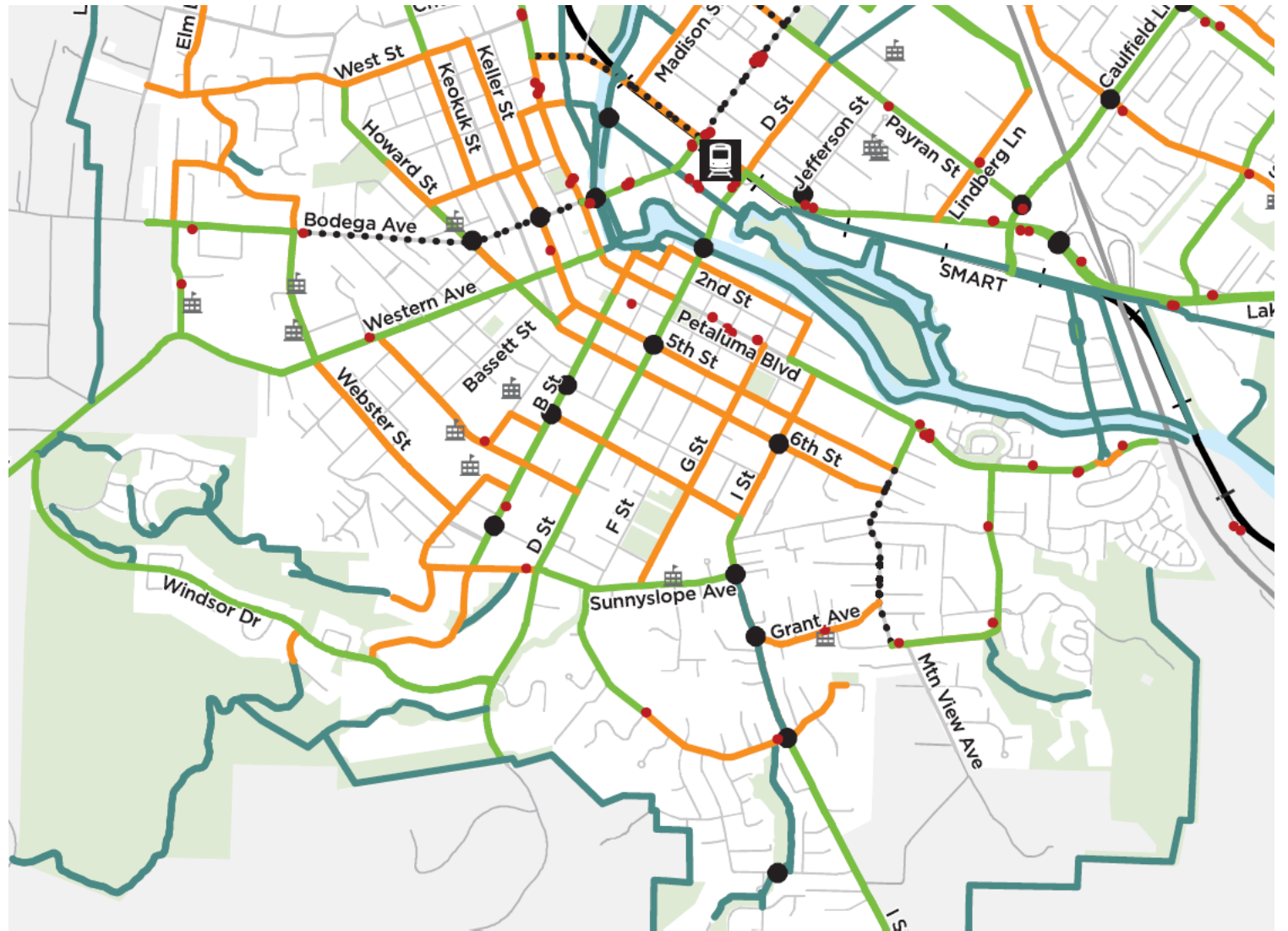
● Bus Stops

🚏 Petaluma SMART Station

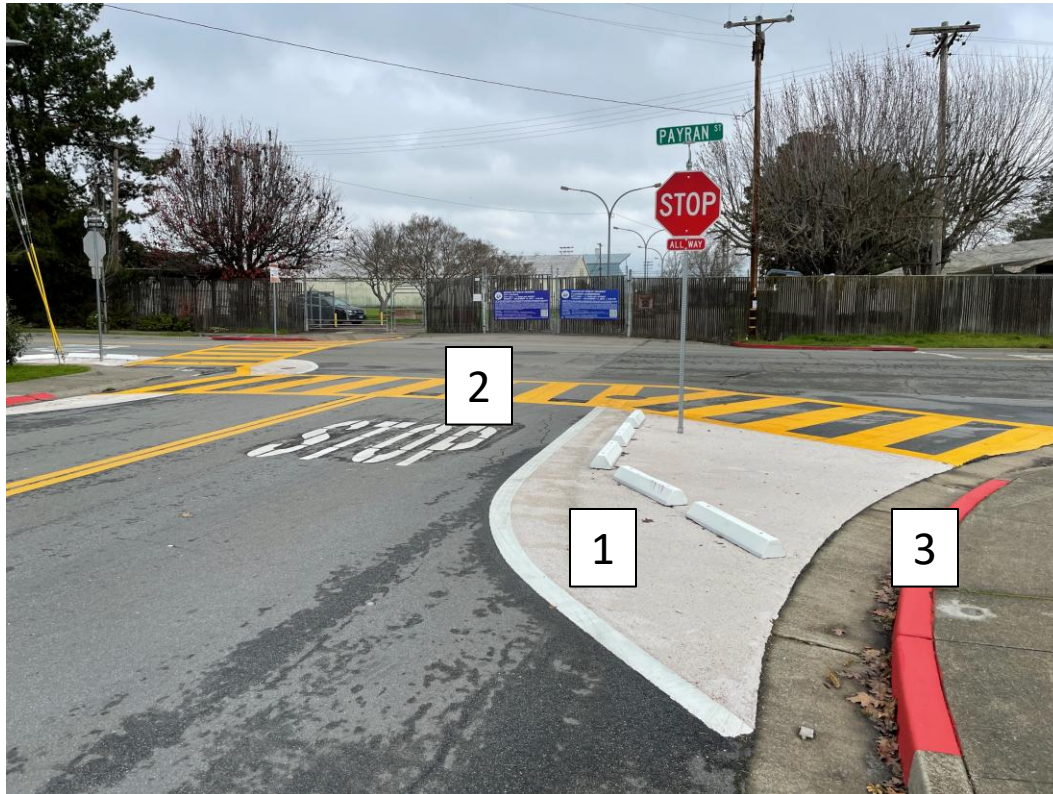
🚏 Petaluma North SMART Station (planned)

🌳 Parks

🏫 Schools



# Typical Intersection Enhancements



- 1) Painted curb extension (“bulbout”)
- 2) Ladder crosswalk; yellow for school zone
- 3) Parking prohibition (“daylighting”)

# Typical Intersection Enhancements

---



- 1) Concrete curb extension (“bulbout”)
- 2) Rapid-flashing beacon