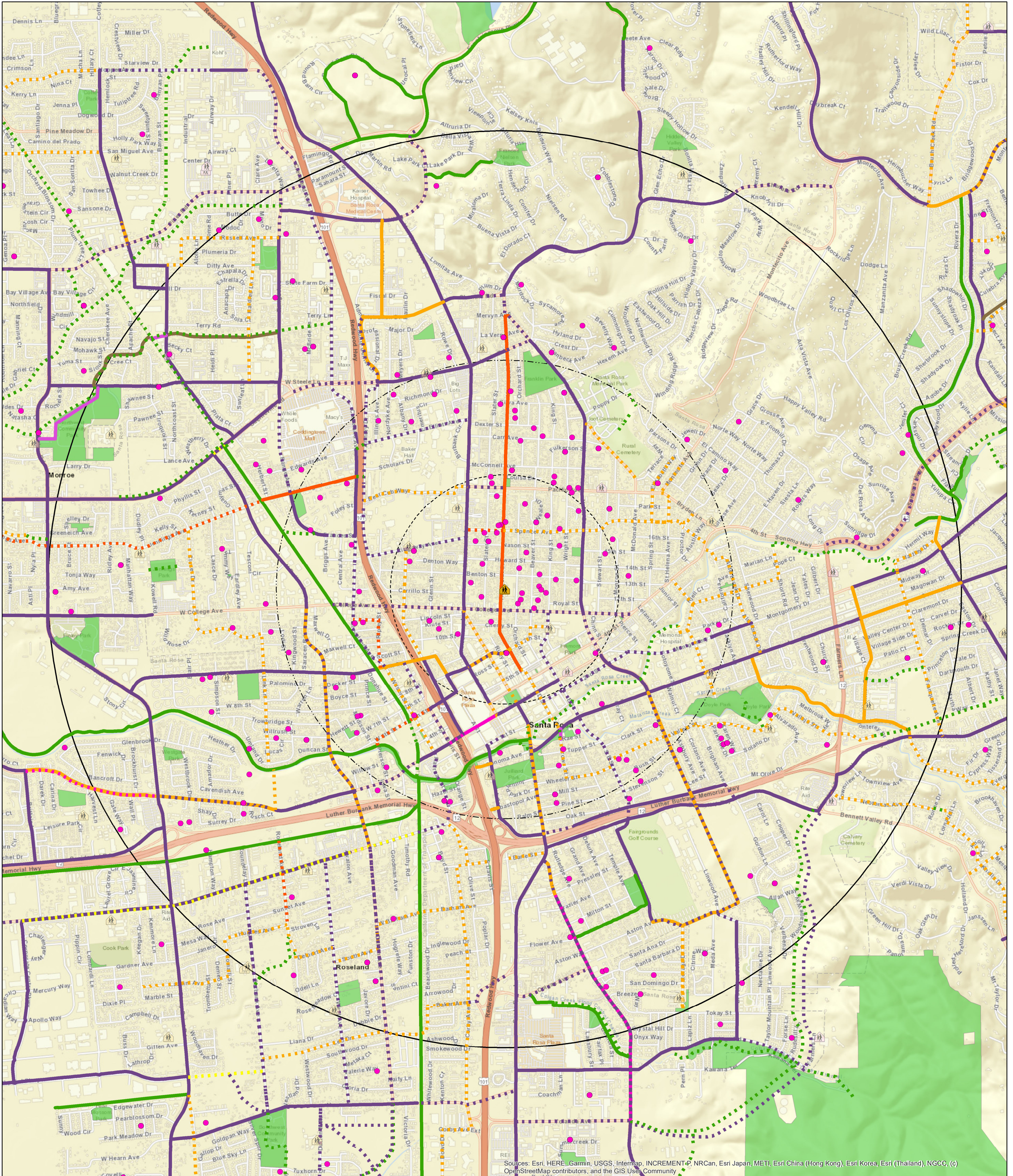


S A F E R O U T E S T O S C H O O L



Sources: Esri, HERE, Garmin, USGS, Intermap, INCREMENT-P, NRCAN, Esri Japan, METI, Esri China (Hong Kong), Esri Korea, Esri (Thailand), NGCC, (c) OpenStreetMap contributors, and the GIS User Community

SR Charter School for the Arts 2024-25 SRTS Study Map

381 Geocoded Students (X did not have an address match)
 229 Students live within 2 miles of the school (60%)
 116 Students live within 1 mile of the school (30%)
 47 Students live within 1/2 mile of the school (12%)
 20 Students live within 1/4 mile of the school (5%)



Bike Plan Existing		Bike Plan Proposed	
	Class I		Class I
	Class II		Class II
	Class III Buffered Bike Lane		Class 2 Buffered Bike Lane
	Class III		Class III
	Bike Boulevard		Bike Boulevard
	PP		Class IV Separated Bikeway
	Trail		



Map Produced by: Sonoma County Bicycle Coalition
 750 Mendocino Ave, Suite 6
 Santa Rosa, CA 95401
 Phone: 545-51153

Author: Sonoma County Transportation Authority
Projection and Coordinate System Tics: California State Plane Coordinate System, Zone 11, NAD 83, US survey feet, Lambert Conformal Conic. Some data have been re-projected from other coordinate systems and may not reflect actual ground positions.
Document Source and Date: I:\sc-gis\q\data\gis\projects\Health Services\Public Health\Safe Routes Schools\2012\MXDs\BookHav.mxd
Source: Sonoma County GIS Central, Sonoma County Public Safety Consortium, Sonoma County Transportation Authority, Sebastopol Union School District.
 This map is provided as a visual display of County information. Reasonable effort has been made to ensure the accuracy of the map and data provided; nevertheless, some information may not be accurate. The positional accuracy of the data is approximate and not intended to represent map accuracy from a THE MAPS AND ASSOCIATED DATA ARE PROVIDED WITHOUT WARRANTY OF ANY KIND, either expressed or implied, including but not limited to, the implied warranties of merchantability and fitness for a particular purpose. Do not make a business decision based on this data before validating your decision with the appropriate County agency or other government entity.