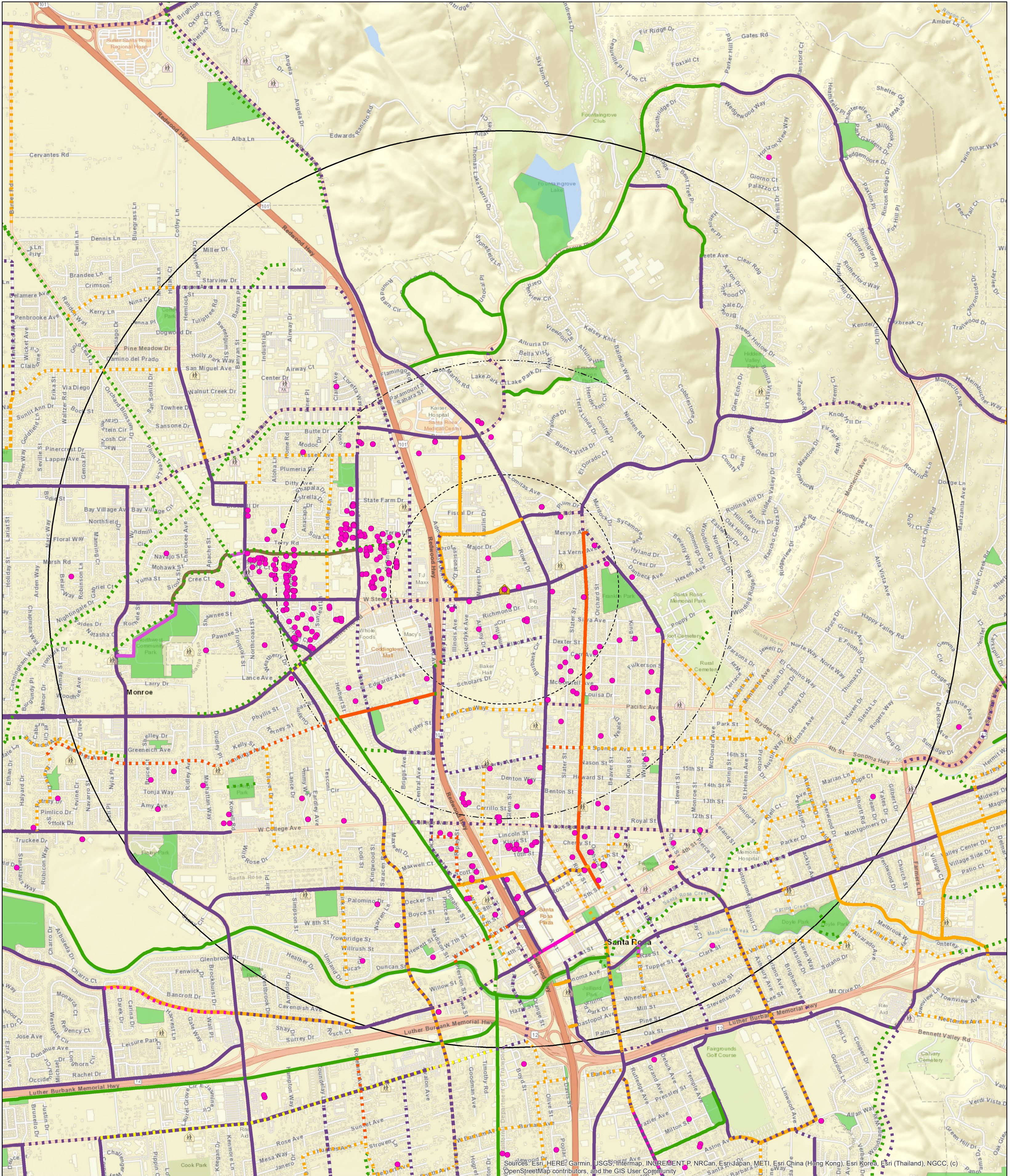


# S A F E R O U T E S T O S C H O O L



Sources: Esri, HERE, Garmin, USGS, Intermap, INCREMENT P, NRCan, Esri Japan, METI, Esri China (Hong Kong), Esri Korea, Esri (Thailand), NGCC, (c) OpenStreetMap contributors, and the GIS User Community

## Steele Lane Elementary School 2024-25 SRTS Study Map

468 Geocoded Students  
 429 Students live within 2 miles of the school (92%)  
 290 Students live within 1 mile of the school (62%)  
 49 Students live within 1/2 mile of the school (10%)  
 21 Students live within 1/4 mile of the school (4%)



- | Bike Plan Existing   | Bike Plan Proposed   |
|--|--|
| <span style="color: green;">—</span> Class I                     | <span style="color: green;">- - -</span> Class I                     |
| <span style="color: purple;">—</span> Class II                   | <span style="color: purple;">- - -</span> Class II                   |
| <span style="color: pink;">—</span> Class III Buffered Bike Lane | <span style="color: pink;">- - -</span> Class 2 Buffered Bike Lane   |
| <span style="color: orange;">—</span> Class III                  | <span style="color: orange;">- - -</span> Class III                  |
| <span style="color: red;">—</span> Bike Boulevard                | <span style="color: red;">- - -</span> Bike Boulevard                |
| <span style="color: purple;">—</span> PP                         | <span style="color: yellow;">- - -</span> Class IV Separated Bikeway |
| <span style="color: brown;">—</span> Trail                       |  |



Author: Sonoma County Transportation Authority  
 Projection and Coordinate System Tics: California State Plane Coordinate System, Zone II, NAD 83, US survey feet, Lambert Conformal Conic. Some data have been re-projected from other coordinate systems and may not reflect actual ground positions.  
 Document Source and Date: I:\sc-gis\gis\data\gis\projects\Health Services\Public Health\Safe Routes Schools\2024\MapBook\MapBook.mxd  
 Source: Sonoma County GIS Central, Sonoma County Public Safety Consortium, Sonoma County Transportation Authority, Sebastopol Union School District.  
 This map is provided as a visual display of County information. Reasonable effort has been made to ensure the accuracy of the map and data provided; nevertheless, some information may not be accurate. The positional accuracy of the data is approximate and not intended to represent map accuracy from a THE MAPS AND ASSOCIATED DATA ARE PROVIDED WITHOUT WARRANTY OF ANY KIND, either expressed or implied, including but not limited to, the implied warranties of merchantability and fitness for a particular purpose. Do not make a business decision based on this data before validating your decision with the appropriate County agency or other government entity.

Map Produced by: Sonoma County Bicycle Coalition  
 750 Mendocino Ave, Suite 6  
 Santa Rosa, CA 95401  
 Phone: 545-5113